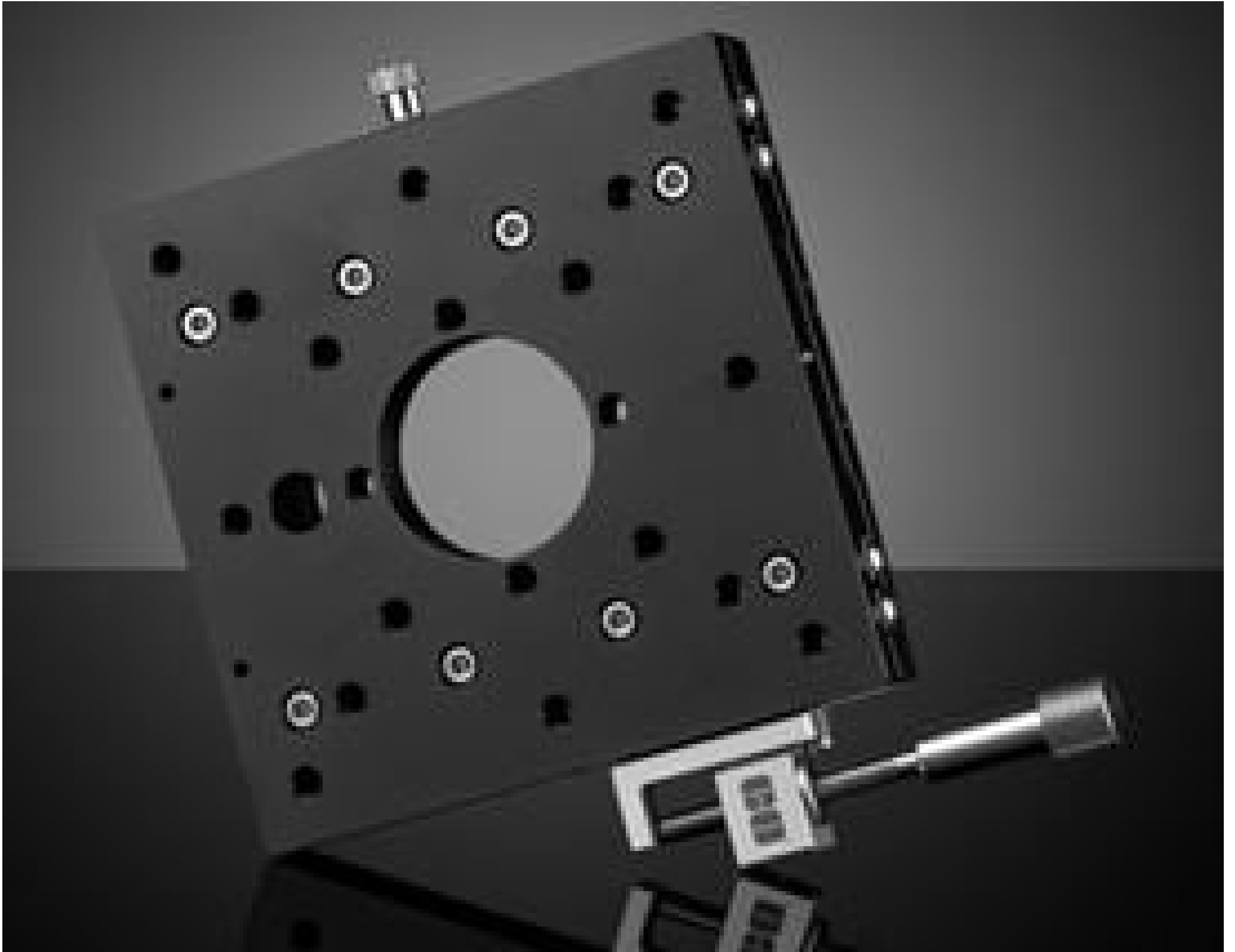


**TECHSPEC® 125mm, Side Drive, Thru-Hole, English Stage**



Stock #66-465 **8 In Stock**

- 1 + C\$994.<sup>00</sup>

**ADD TO CART**

| Volume Pricing |                               |
|----------------|-------------------------------|
| Qty 1-2        | C\$994.00 each                |
| Qty 3+         | C\$867.30 each                |
| Need More?     | <a href="#">Request Quote</a> |

Product Downloads

**General**

English **Type:**

**Physical & Mechanical Properties**

Linear (X) **Type of Movement:**

Crossed Roller Bearing **Guide System:**

Side Drive **Drive Orientation:**

|                 |                                     |
|-----------------|-------------------------------------|
| 125 x 125       | <b>Stage Size (mm):</b>             |
| 1               | <b>Travel (inches):</b>             |
| M42 x 0.75      | <b>Center Hole:</b>                 |
| Aluminium Stage | <b>Construction:</b>                |
| 0.5             | <b>Leadscrew Pitch (mm):</b>        |
| 20              | <b>Load Capacity (kg):</b>          |
| 4.92 x 4.92     | <b>Stage Size (inches):</b>         |
| 2               | <b>Straight Line Accuracy (µm):</b> |
| 30              | <b>Pitch (arcsec):</b>              |
| 25              | <b>Yaw (arcsec):</b>                |

### Hardware & Interface Connectivity

|            |                       |
|------------|-----------------------|
| Lead Screw | <b>Type of Drive:</b> |
|------------|-----------------------|

### Threading & Mounting

|                             |                          |
|-----------------------------|--------------------------|
| (1) M42 x 0.75, (20) 1/4-20 | <b>Mounting Threads:</b> |
|-----------------------------|--------------------------|

### Regulatory Compliance

|                           |                                    |
|---------------------------|------------------------------------|
| <a href="#">Compliant</a> | <b>RoHS 2015:</b>                  |
| <a href="#">View</a>      | <b>Certificate of Conformance:</b> |
| <a href="#">Compliant</a> | <b>REACH 241:</b>                  |

## Product Details

- Four Sizes Ranging from 30 x 30mm to 125 x 125mm
- Thru-Hole Design for Optical Path Transmission
- English and Metric Hole Patterns Available
- Micrometer and Lead Screw Drive Options

TECHSPEC® Crossed-Roller Bearing Linear Translation Stages (Thru-Hole Model) feature a high performance crossed roller bearing guide system that provides these stages with high load capacity, rigidity, and accuracy. This advanced bearing guide system allows the single axis translations stages to have precise positioning with straight line accuracy of 2µm. TECHSPEC® Crossed-Roller Bearing Linear Translation Stages (Thru-Hole Model) are able to integrate with other stage sizes as well as integrate with TECHSPEC® Manual Translation Stages, providing users the flexibility to create configurations with a number of axes. Translation stages are available with either English or Metric hole patterns for easy incorporation into existing optomechanical systems.

Thru-Hole Translational Stages are available with the following thread centered on their top plate: 5/16"-24 thread on our 30mm stages for use with our [#38-534](#) Pinhole Adapter, S-Mount (M12 x 0.5) on our 40mm stages, C-Mount (1"-32 TPI) on our 70mm stages, and T-Mount (M42 x 0.75) on our 125mm stages for compatibility with our C-, T-, and S-Mount Tube System Components.

All translation stages are class 100 (ISO 5) clean room compatible and available with a micrometer or lead screw drive with either center or side drive configuration. Leadscrew drives offer 0.5mm pitch, Metric micrometers offer 0.5mm pitch with 0.01mm divisions, and English micrometers offer 0.025" pitch with 0.001" divisions.

[TECHSPEC Z-Axis Brackets](#) are available to use with our translation stages to configure your own X-Y-Z multi-axis positioning system. TECHSPEC Bottom Adapter Plates provide an easy and convenient way of mounting 30mm and 40mm stages to standard breadboards. No adapter plate is required for our 70mm and 125mm translation stages which can be mounted directly onto breadboards.

## Technical Information

| Bottom Stage         | Top Stage            |                |                |                |                 |                      |                |                |                |                 |                |                |                |                |                 |                |                |                |                |                |                |
|----------------------|----------------------|----------------|----------------|----------------|-----------------|----------------------|----------------|----------------|----------------|-----------------|----------------|----------------|----------------|----------------|-----------------|----------------|----------------|----------------|----------------|----------------|----------------|
|                      | 30mm Linear Dovetail | 30mm Linear    | 30mm Vertical  | 30mm Tip/Tilt  | 30mm Goniometer | 40mm Linear Dovetail | 40mm Linear    | 40mm Vertical  | 40mm Tip/Tilt  | 40mm Goniometer | 40mm Rotary    | 70mm Linear    | 70mm Vertical  | 70mm Tip/Tilt  | 70mm Goniometer | 70mm Rotary    | 125mm Linear   | 125mm Vertical | 125mm Tip/Tilt | 125mm Rotary   |                |
| 30mm Linear Dovetail | Compatible           | Not Applicable | Not Applicable | Not Applicable | Not Applicable  | Not Applicable       | Not Applicable | Not Applicable | Not Applicable | Not Applicable  | Not Applicable | Not Applicable | Not Applicable | Not Applicable | Not Applicable  | Not Applicable | Not Applicable | Not Applicable | Not Applicable | Not Applicable | Not Applicable |
| 30mm Linear          | Compatible           | Compatible     | Not Applicable | Not Applicable | Not Applicable  | Not Applicable       | Not Applicable | Not Applicable | Not Applicable | Not Applicable  | Not Applicable | Not Applicable | Not Applicable | Not Applicable | Not Applicable  | Not Applicable | Not Applicable | Not Applicable | Not Applicable | Not Applicable | Not Applicable |
| 30mm Vertical        | Compatible           | Not Applicable | Compatible     | Not Applicable | Not Applicable  | Not Applicable       | Not Applicable | Not Applicable | Not Applicable | Not Applicable  | Not Applicable | Not Applicable | Not Applicable | Not Applicable | Not Applicable  | Not Applicable | Not Applicable | Not Applicable | Not Applicable | Not Applicable | Not Applicable |
| 30mm Tip/Tilt        | Compatible           | Not Applicable | Not Applicable | Compatible     | Not Applicable  | Not Applicable       | Not Applicable | Not Applicable | Not Applicable | Not Applicable  | Not Applicable | Not Applicable | Not Applicable | Not Applicable | Not Applicable  | Not Applicable | Not Applicable | Not Applicable | Not Applicable | Not Applicable | Not Applicable |
| 30mm Goniometer      | Compatible           | Not Applicable | Not Applicable | Not Applicable | Compatible      | Not Applicable       | Not Applicable | Not Applicable | Not Applicable | Not Applicable  | Not Applicable | Not Applicable | Not Applicable | Not Applicable | Not Applicable  | Not Applicable | Not Applicable | Not Applicable | Not Applicable | Not Applicable | Not Applicable |
| 30mm Rotary          | Compatible           | Not Applicable | Not Applicable | Not Applicable | Not Applicable  | Not Applicable       | Not Applicable | Not Applicable | Not Applicable | Not Applicable  | Compatible     | Not Applicable | Not Applicable | Not Applicable | Not Applicable  | Not Applicable | Not Applicable | Not Applicable | Not Applicable | Not Applicable | Not Applicable |
| 40mm Linear Dovetail | Compatible           | Not Applicable | Not Applicable | Not Applicable | Not Applicable  | Compatible           | Not Applicable | Not Applicable | Not Applicable | Not Applicable  | Not Applicable | Not Applicable | Not Applicable | Not Applicable | Not Applicable  | Not Applicable | Not Applicable | Not Applicable | Not Applicable | Not Applicable | Not Applicable |
| 40mm Linear          | Compatible           | Compatible     | Not Applicable | Not Applicable | Not Applicable  | Compatible           | Compatible     | Not Applicable | Not Applicable | Not Applicable  | Not Applicable | Not Applicable | Not Applicable | Not Applicable | Not Applicable  | Not Applicable | Not Applicable | Not Applicable | Not Applicable | Not Applicable | Not Applicable |
| 40mm Vertical        | Compatible           | Not Applicable | Compatible     | Not Applicable | Not Applicable  | Compatible           | Compatible     | Compatible     | Not Applicable | Not Applicable  | Not Applicable | Not Applicable | Not Applicable | Not Applicable | Not Applicable  | Not Applicable | Not Applicable | Not Applicable | Not Applicable | Not Applicable | Not Applicable |
| 40mm Tip/Tilt        | Compatible           | Not Applicable | Not Applicable | Compatible     | Not Applicable  | Compatible           | Compatible     | Compatible     | Compatible     | Not Applicable  | Not Applicable | Not Applicable | Not Applicable | Not Applicable | Not Applicable  | Not Applicable | Not Applicable | Not Applicable | Not Applicable | Not Applicable | Not Applicable |
| 40mm Goniometer      | Compatible           | Not Applicable | Not Applicable | Not Applicable | Compatible      | Compatible           | Compatible     | Compatible     | Compatible     | Compatible      | Not Applicable | Not Applicable | Not Applicable | Not Applicable | Not Applicable  | Not Applicable | Not Applicable | Not Applicable | Not Applicable | Not Applicable | Not Applicable |
| 40mm Rotary          | Compatible           | Not Applicable | Not Applicable | Not Applicable | Not Applicable  | Compatible           | Compatible     | Compatible     | Compatible     | Compatible      | Compatible     | Compatible     | Not Applicable | Not Applicable | Not Applicable  | Not Applicable | Not Applicable | Not Applicable | Not Applicable | Not Applicable | Not Applicable |
| 65mm Linear Dovetail | Compatible           | Not Applicable | Not Applicable | Not Applicable | Not Applicable  | Not Applicable       | Not Applicable | Not Applicable | Not Applicable | Not Applicable  | Not Applicable | Not Applicable | Not Applicable | Not Applicable | Not Applicable  | Not Applicable | Not Applicable | Not Applicable | Not Applicable | Not Applicable | Not Applicable |
| 70mm Linear          | Compatible           | Not Applicable | Not Applicable | Not Applicable | Not Applicable  | Not Applicable       | Not Applicable | Not Applicable | Not Applicable | Not Applicable  | Not Applicable | Compatible     | Not Applicable | Not Applicable | Not Applicable  | Not Applicable | Not Applicable | Not Applicable | Not Applicable | Not Applicable | Not Applicable |
| 70mm Vertical        | Compatible           | Not Applicable | Compatible     | Not Applicable | Not Applicable  | Not Applicable       | Not Applicable | Not Applicable | Not Applicable | Not Applicable  | Not Applicable | Compatible     | Compatible     | Not Applicable | Not Applicable  | Not Applicable | Not Applicable | Not Applicable | Not Applicable | Not Applicable | Not Applicable |
| 70mm Tip/Tilt        | Compatible           | Not Applicable | Not Applicable | Compatible     | Not Applicable  | Not Applicable       | Not Applicable | Not Applicable | Not Applicable | Not Applicable  | Not Applicable | Compatible     | Compatible     | Compatible     | Not Applicable  | Not Applicable | Not Applicable | Not Applicable | Not Applicable | Not Applicable | Not Applicable |
| 70mm Goniometer      | Compatible           | Not Applicable | Not Applicable | Not Applicable | Compatible      | Not Applicable       | Not Applicable | Not Applicable | Not Applicable | Not Applicable  | Not Applicable | Compatible     | Compatible     | Compatible     | Compatible      | Not Applicable | Not Applicable | Not Applicable | Not Applicable | Not Applicable | Not Applicable |
| 70mm Rotary          | Compatible           | Not Applicable | Not Applicable | Not Applicable | Not Applicable  | Not Applicable       | Not Applicable | Not Applicable | Not Applicable | Not Applicable  | Compatible     | Compatible     | Compatible     | Compatible     | Compatible      | Compatible     | Not Applicable | Not Applicable | Not Applicable | Not Applicable | Not Applicable |
| 125mm Linear         | Compatible           | Not Applicable | Not Applicable | Not Applicable | Not Applicable  | Not Applicable       | Not Applicable | Not Applicable | Not Applicable | Not Applicable  | Not Applicable | Not Applicable | Not Applicable | Not Applicable | Not Applicable  | Not Applicable | Not Applicable | Not Applicable | Not Applicable | Not Applicable | Not Applicable |
| 125mm Vertical       | Compatible           | Not Applicable | Compatible     | Not Applicable | Not Applicable  | Not Applicable       | Not Applicable | Not Applicable | Not Applicable | Not Applicable  | Not Applicable | Not Applicable | Not Applicable | Not Applicable | Not Applicable  | Not Applicable | Not Applicable | Not Applicable | Not Applicable | Not Applicable | Not Applicable |
| 125mm Tip/Tilt       | Compatible           | Not Applicable | Not Applicable | Compatible     | Not Applicable  | Not Applicable       | Not Applicable | Not Applicable | Not Applicable | Not Applicable  | Not Applicable | Not Applicable | Not Applicable | Not Applicable | Not Applicable  | Not Applicable | Not Applicable | Not Applicable | Not Applicable | Not Applicable | Not Applicable |
| 125mm Rotary         | Compatible           | Not Applicable | Not Applicable | Not Applicable | Not Applicable  | Not Applicable       | Not Applicable | Not Applicable | Not Applicable | Not Applicable  | Compatible     | Compatible     | Compatible     | Compatible     | Compatible      | Compatible     | Compatible     | Not Applicable | Not Applicable | Not Applicable | Not Applicable |