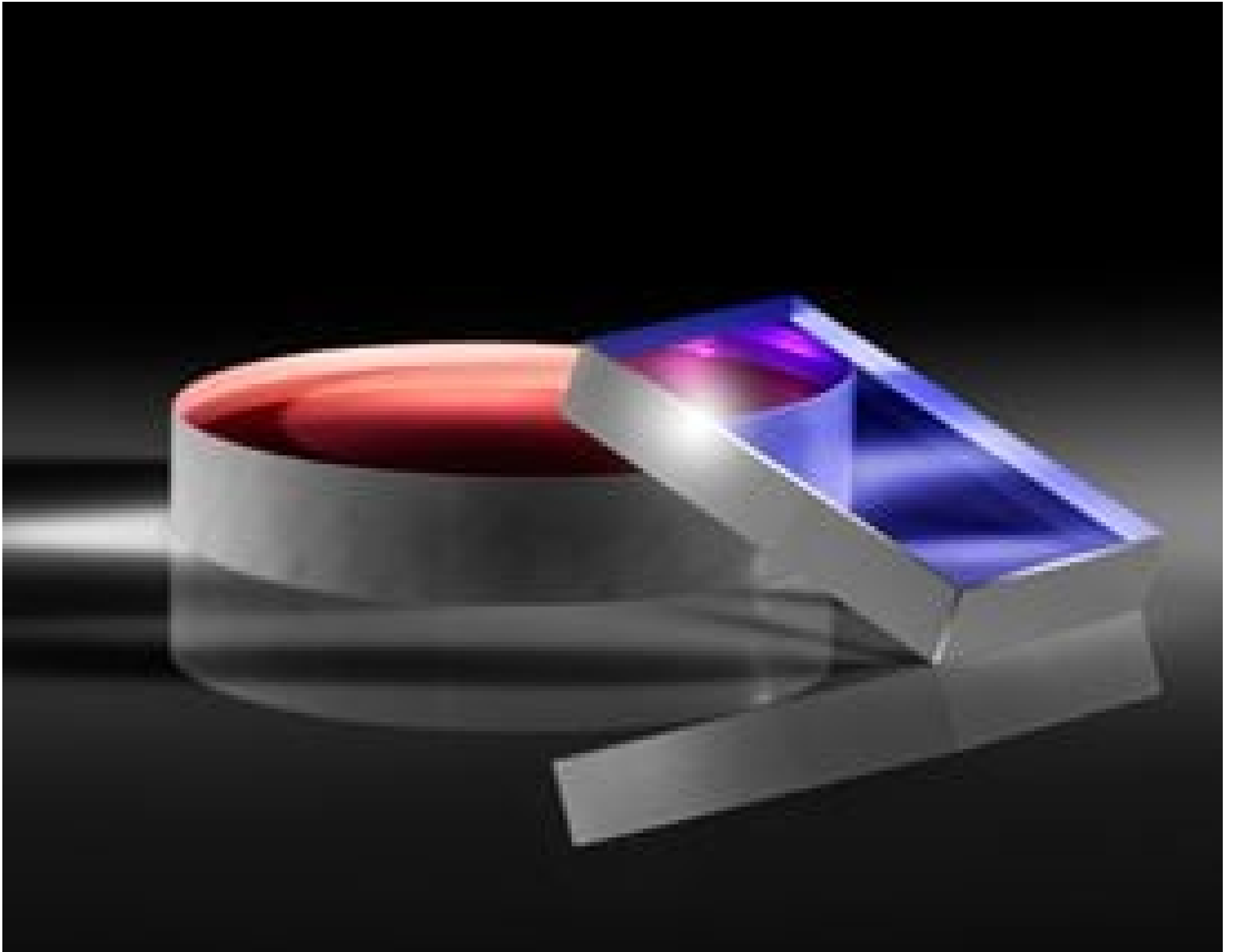


TECHSPEC® 12.7mm Dia. Precision Broadband Laser Mirror Substrate



TECHSPEC® Laser Mirror Substrates

Stock #75-409 NEW **20+ In Stock**

⊖ 1 ⊕ C\$119⁰⁰

ADD TO CART

Volume Pricing	
Qty 1-5	C\$119.70 each
Qty 6-25	C\$105.00 each
Qty 26+	C\$92.40 each
Need More?	Request Quote

Product Downloads

SPECIFICATIONS

General

Laser Mirror Substrate **Type:**

Physical & Mechanical Properties

<3	Parallelism (arcmin):
90	Clear Aperture (%):
Ground	Back Surface:
12.70 +0.0/-0.1	Diameter (mm):
5.00 ±0.2	Thickness (mm):
Ground, protective bevel as needed	Edges:

Optical Properties

10-5	Surface Quality:
λ/20	Surface Flatness (P-V):
Uncoated	Coating:
Fused Silica (Corning 7980)	Substrate: <input type="checkbox"/>

Regulatory Compliance

View	Certificate of Conformance:
----------------------	------------------------------------

PRODUCT DETAILS

- λ/10 and λ/20 Surface Flatness and 10-5 Surface Quality
- High Quality Fused Silica Substrates
- Imperial Sizes with Circular or Rectangular Geometries
- [Window Substrates](#) Also Available

TECHSPEC® Laser Mirror Substrates are manufactured from high quality fused silica and are designed for use with high power laser sources. These mirrors feature excellent surface specifications, including λ/10 and λ/20 surface flatness and 10-5 surface quality, to limit the possibility of reduced performance due to surface defects. The high surface quality of these mirror blanks also makes them ideal for use in demanding intra-cavity laser applications. TECHSPEC Laser Mirror Substrates are available in standard imperial sizes, with either circular or rectangular geometries. Please contact us if your application requires a custom size laser mirror substrate.