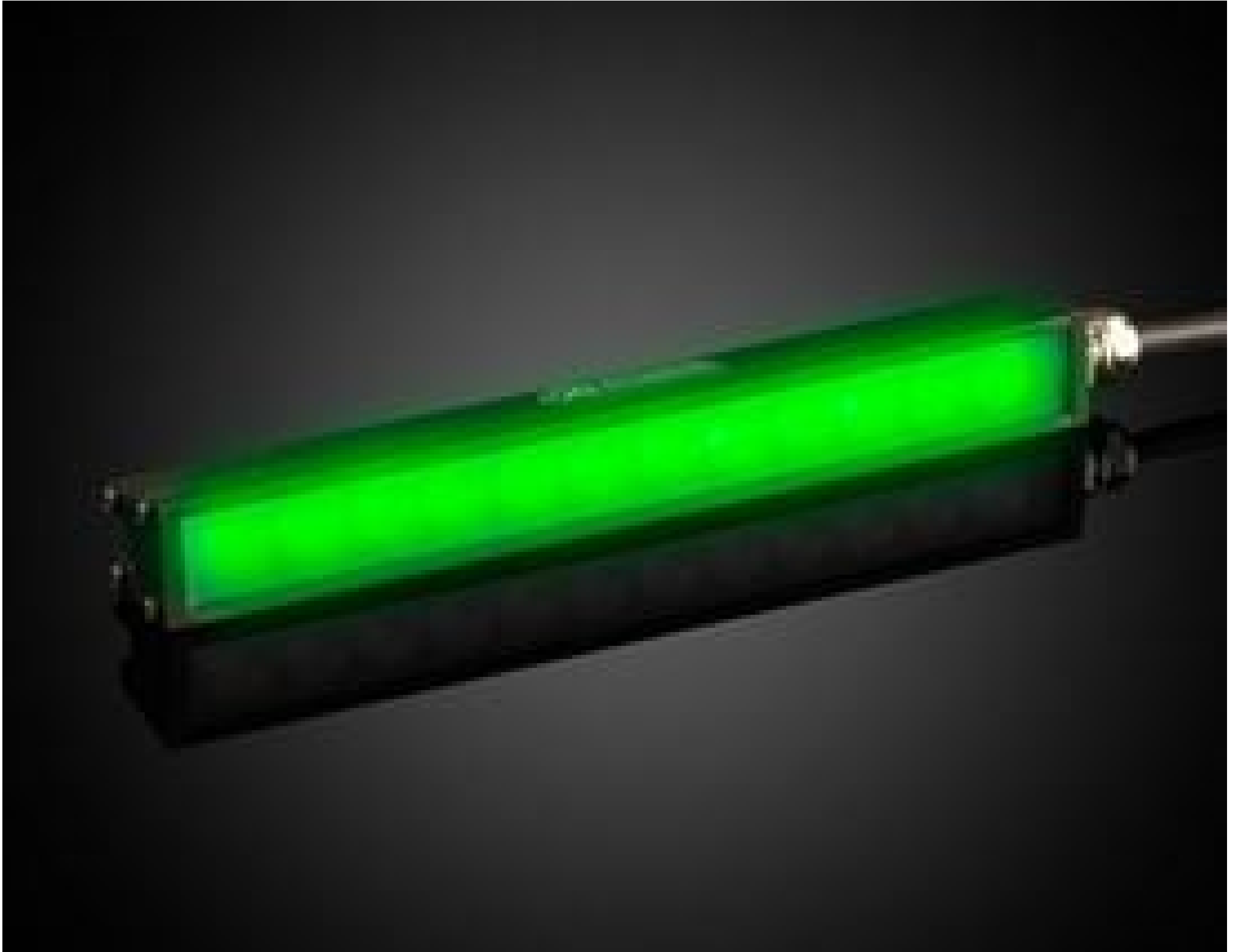


[See all 10 Products in Family](#)

Green 530nm, MicroBrite Ultra High Intensity Bar Light

See More by [Advanced Illumination](#)



Stock #18-543 **1 In Stock**

- 1 + C\$875⁰⁰

ADD TO CART

Volume Pricing	
Qty 1+	C\$875.00 each
Need More?	Request Quote

Product Downloads

General

AL295-150530IC **Model Number:**

50,000 **LED Lifetime (hours):**

LED Illuminator **Type of Illumination:**

Note:
Optional Manual Intensity Adjustment [#86-887](#) and [#89-555](#) are Available

Manufacturer:

Advanced Illumination

Bar Light

Geometry:

Constant

Illumination Mode:

Physical & Mechanical Properties

165.6 x 20.1 x 20.1

Dimensions (mm):

68.9

Weight (g):

Optical Properties

Green

Color:

530

Wavelength (nm):

Electrical

0.27A

Maximum Input Current:

Hardware & Interface Connectivity

Flying Leads

Connector:

24V

Input Voltage (V):

Power Supply:

Power Supply Required and Sold Separately.

USA: [#66-855](#)

Europe: [#66-855](#)

Japan: [#89-513](#)

Korea: [#33-773](#)

China: [#66-855](#)

Environmental & Durability Factors

0 - 60

Operating Temperature (°C):

IP50

Environmental Rating:

Regulatory Compliance

[Exempt](#)

RoHS 2015:

[View](#)

Certificate of Conformance:

[Contains SVHC\(s\)](#)

Reach 233:

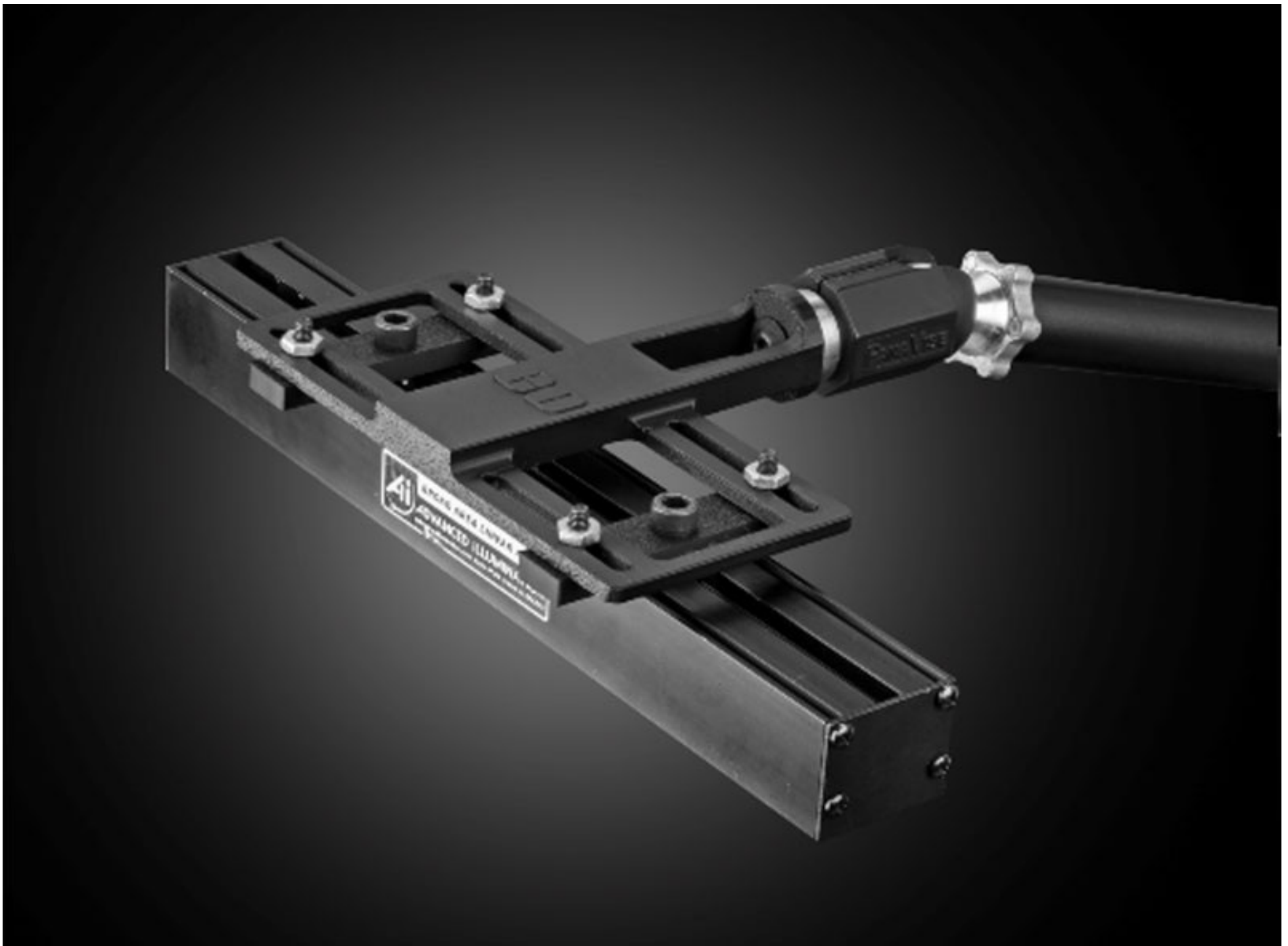
Product Details

- High Intensity Output up to 73,000 Lux
- Compact Housing with T-Slot Mount
- Full Range of Wavelengths Available
- Optional Manual Intensity Adjustments ([#86-887](#) and [#89-555](#)) Recommended

Advanced Illumination MicroBrite Ultra High Intensity Bar Lights offer high performance machine vision lights in a compact form factor. With a high intensity output of 73,000 Lux at a working distance of 100mm, these MicroBrite Bar Lights outperform higher cost comparable bar lights. These bar lights are available in the most common machine vision wavelengths. Advanced Illumination MicroBrite Ultra High Intensity Bar Lights are designed for applications requiring intense illumination for large area inspection. Please contact us if your application requires a MicroBrite Ultra High Intensity Bar Light with a custom length.

Note: Requires 24V power supply [#66-855](#). Manual Intensity Adjustment [#86-887](#) and [#89-555](#) are recommended and sold separately.

[3D-Printable Mount Files](#)



Bar or Line Light Configuration

[Download Now](#)

Designed for use with the [Articulating Arm Mounting Systems](#), these 3D-printed mounts allow easy positioning of lights in brightfield or darkfield setups. The design is based on mounting illumination to 1/4-20" breadboards or into 80/20 extrusion systems, but can be adapted based on user needs. Mounts are available for ring, bar, line, and inline spot lights.



[Application Note](#)

Illumination Mounts for Machine Vision Applications

[Read](#)



[Video](#)

Assembly of 3D Printed Mounts for Common Illumination Geometries

[Watch](#)