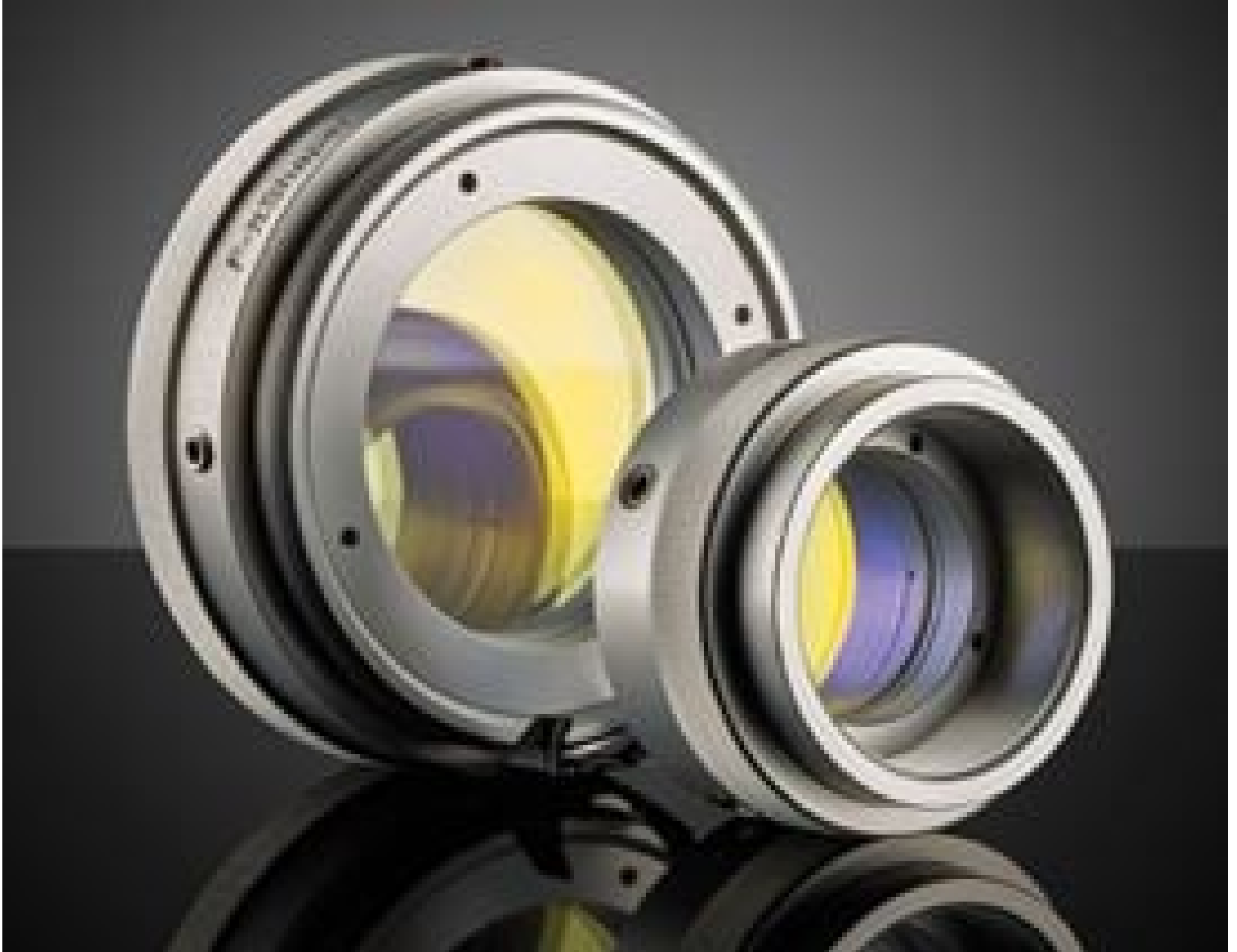


[See all 32 Products in Family](#)

1550nm & 2μm (1500 - 2100nm), 6-9mm Dia. Input Beam, Focal Flat Top Beam Shaper | Focal-πShaper_NIR_Q-7.5

See More by [AdiOptica](#)



Stock **#25-853** **1 In Stock**

⊖ 1 ⊕ C\$5,425⁰⁰

ADD TO CART

Volume Pricing	
Qty 1-4	C\$5,425.00 each
Qty 5+	C\$4,837.00 each
Need More?	Request Quote

Product Downloads

General

Focal-πShaper_NIR_Q-7.5 **Model Number:**

Beam Shaper **Type:**

#12-322

Compatible Adapter:

Physical & Mechanical Properties

29.00	Length (mm):
50	Weight (g):
20	Clear Aperture CA (mm):
42.00	Diameter (mm):
6 - 9	Input Beam Diameter, $1/e^2$ (mm):

Optical Properties

>99	Transmission (%):
1550, 2000	Design Wavelength DWL (nm):
1550 - 2000	Wavelength Range (nm):
TEM ₀₀	Input Beam Mode:
<1.5	Typical Input Beam Mode Quality, M ² :
±20	Input Beam Divergence (mrad):

Electrical

0.2	Maximum Input Power, CW (kW):
-----	-------------------------------

Threading & Mounting

M30 x0.75	Inner Thread:
M30 x0.75	Outer Thread:

Regulatory Compliance

Compliant	RoHS 2015:
View	Certificate of Conformance:
Compliant	Reach 250:

Product Details

- Shapes Gaussian Beams to Airy Disk Profile
- Airy Disk is Focusable to Flat Top Spot
- Near 100% Efficiency
- [AdlOptica piShaper Flat Top Beam Shapers](#) Also Available

AdlOptica Focal-πShaper (piShaper) Q Flat Top Beam Shapers are used to transform Gaussian beams to flat-top profiles after focusing through a lens. This is accomplished by transforming the Gaussian beam to airy disk profiles immediately after the piShaper. These beam shapers feature a compact design with inner and outer threading, making them easy to integrate into equipment. AdlOptica Focal-πShapers are advantageous for beam shaping in micromachining applications, including scribing and PCB drilling, as well as micro-welding applications. Multiple models are available at Nd:YAG, Ti:Sapphire, and Infrared wavelengths with compatible input beam diameters as small as 2.5mm and up to 23mm.

Technical Information

