

**TECHSPEC®**

# 25mm Dia., 30mm Cage Double Male Simple Optic Mount

 Stock #85-605 **3 In Stock**

 - 1 + **C\$59<sup>.15</sup>**
**ADD TO CART**

Volume Pricing	
Qty 1+	C\$59.15 each
Need More?	<a href="#">Request Quote</a>

Product Downloads	
STEP:step	PDF Drawing:pdf
IGES:igs	eDrawing:eprt
EO Spec Sheet	<a href="#">Download All</a>

## General

<b>Function:</b> Fixed	<b>Type of Optics:</b> Circular/Cylindrical Tube
------------------------	--

## Physical & Mechanical Properties

<b>Compatible Plate Inner Diameter (mm):</b> 30.0	<b>Extension Length (mm):</b> 4.0
<b>Construction:</b> Black Anodized Aluminum	<b>Dimensions (mm):</b> 30 Dia.

## Threading & Mounting

<b>Size of Compatible Optics (mm):</b> 25.0	<b>Thickness of Compatible Optics (mm):</b> 10.0
<b>Thread Type:</b> M23.2 x 0.75 (Double Male)	

## Regulatory Compliance

<b>RoHS 2015:</b> <b>Compliant</b>	<b>Reach 224:</b> <b>Compliant</b>
<b>Certificate of Conformance:</b> <a href="#">View</a>	

## Product Details

- Available for a Range of Diameters
- Fits within 25mm or 30mm [Cage System Plates](#)
- Ideal for Securing Mounted Optics or Laser Diode Modules

TECHSPEC® Cage System Simple Optical Mounts are ideal for securing mounted optics, laser diode modules, or other optical components within a TECHSPEC® Cage System. A single set screw secures the component within the simple optical mount. Each mount features male threading for easy integration with [cage system tubes](#). By enabling the addition and removal of components from plates, TECHSPEC 25mm and 30mm Cage System Simple Optical Mounts add additional flexibility to any TECHSPEC Cage System setups. Additionally, these simple optical mounts are ideal as stand-alone components or combined with cage system tubes.

## Related Products



Cage System Mounting Plates



Cage System Optical Lens Mounts



M23.2 and M27.5 Fixed Tubes and Retaining Rings



M23.2 and M27.5 Tube Adapters & Accessories

## Frequently Purchased Together



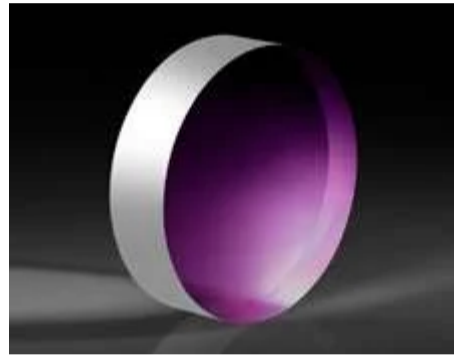
#33-426 - LightPath 354125 | 11mm Dia., 0.50 NA, BBAR (600-1050nm), Molded Aspheric Lens  
C\$166.60

Qty



#39-351 - 3/4" Dia Stainless Posts, Vertical Post 12"  
C\$130.20

Qty



#45-075 - 12.5mm Dia., 3mm Thick, Uncoated λ/4 N-BK7 Window  
C\$98.00

Qty



#45-364 - 25.0mm Dia. x 30.0mm FL, Uncoated, Plano-Convex Lens  
C\$49.00

Qty

## Resources

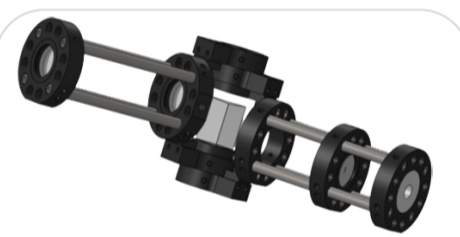
### Media Type

- Application Note
- Video
- Glossary



APPLICATION NOTE

Getting Started Using the Cage System...



APPLICATION NOTE

Optical Cage System Design Examples



APPLICATION NOTE

Using C-Mount Components with the Optical Cage...



VIDEO

Four-Rod Insertion Plate



VIDEO

Filter Holder Plate and Interchangeable Filter Holder



VIDEO

Introduction to the TECHSPEC Optical Cage System

[View More](#)

---