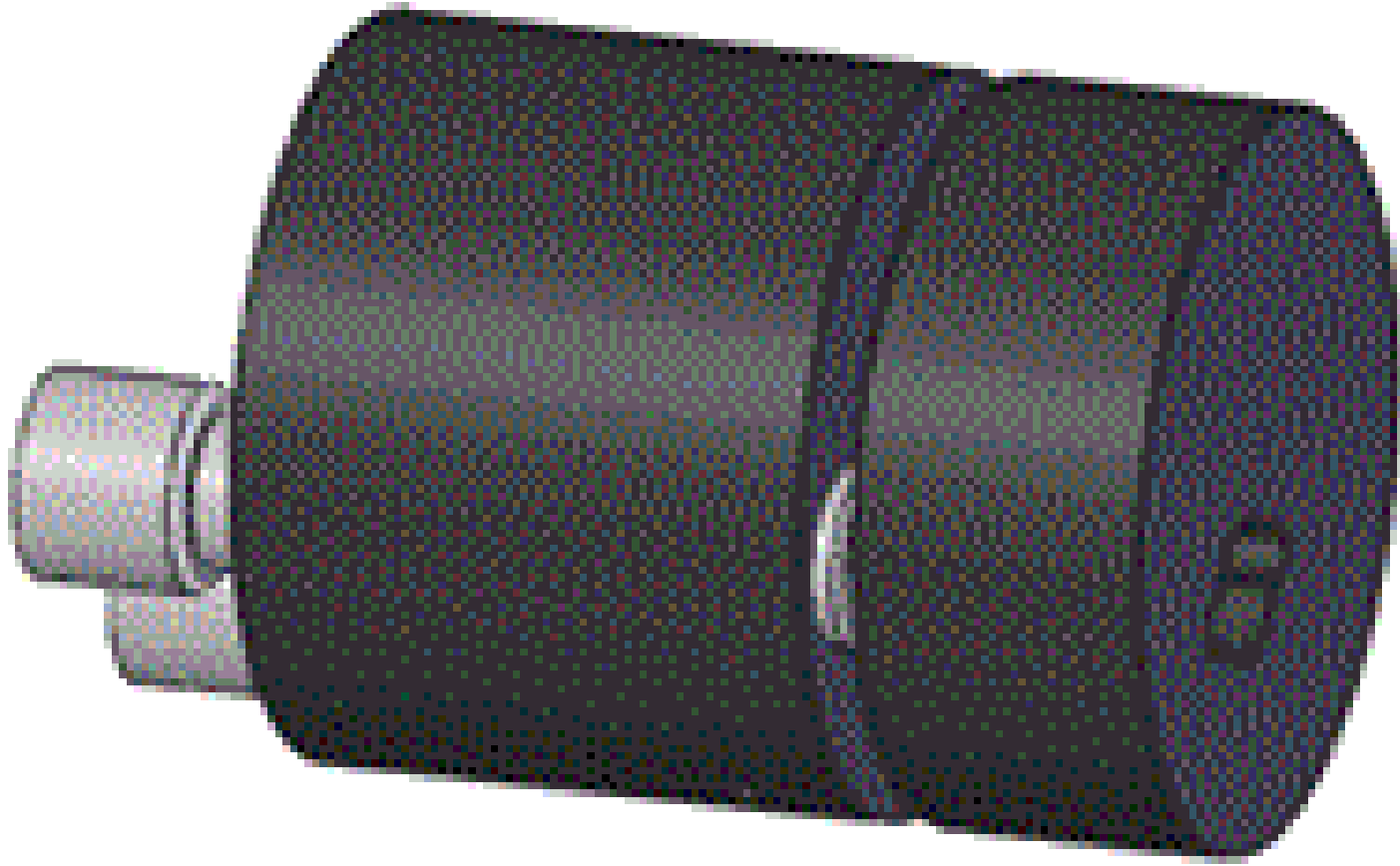


**TECHSPEC** 25mm Tip/Tilt Solid Table



25mm Tip/Tilt Solid Table, #86-026

Stock **#86-026** [CONTACT US](#)

⊖ 1 ⊕ C\$424<sup>20</sup>

**ADD TO CART**

| Volume Pricing |                               |
|----------------|-------------------------------|
| Qty 1+         | C\$424.20 each                |
| Need More?     | <a href="#">Request Quote</a> |

Product Downloads

**General**

Tip-Tilt **Function:**

Circular **Type of Optics:**

25mm Diameter Table (No Tapped Hole) **Note:**

**Physical & Mechanical Properties**

25.0 **Compatible Plate Inner Diameter (mm):**

|                         |                                     |
|-------------------------|-------------------------------------|
| Black Anodized Aluminum | <b>Construction:</b>                |
| 25 Dia.                 | <b>Dimensions (mm):</b>             |
| 0.5                     | <b>Adjustment Screw Pitch (mm):</b> |
| ±8 Tip/Tilt             | <b>Travel (°):</b>                  |

## Regulatory Compliance

|                           |                                    |
|---------------------------|------------------------------------|
| <a href="#">Compliant</a> | <b>RoHS 2015:</b>                  |
| <a href="#">View</a>      | <b>Certificate of Conformance:</b> |
| <a href="#">Compliant</a> | <b>Reach 235:</b>                  |

## Product Details

- Available for a Range of Optical Components
- Anodized Aluminum Construction with Stainless Steel Screws
- 0.5mm Pitch Fine Adjustment Screw
- [Fixed Optical Mounts](#) Also Available

Ideal for beam steering applications, TECHSPEC® Cage System Adjustable Optical Mounts are used to integrate a variety of optical components into a TECHSPEC Cage System. Designed to fit within the inner diameter of 25mm or 30mm standard [cage system plates](#), these optical mounts utilize set screws to secure optical components in place, providing the stability and adjustment needed for precision optical alignment. [#85-695](#) 25.4mm Kinematic Mount features a 12.7mm clear aperture and can be paired with [#85-699](#) 45° plate beamsplitter mount.