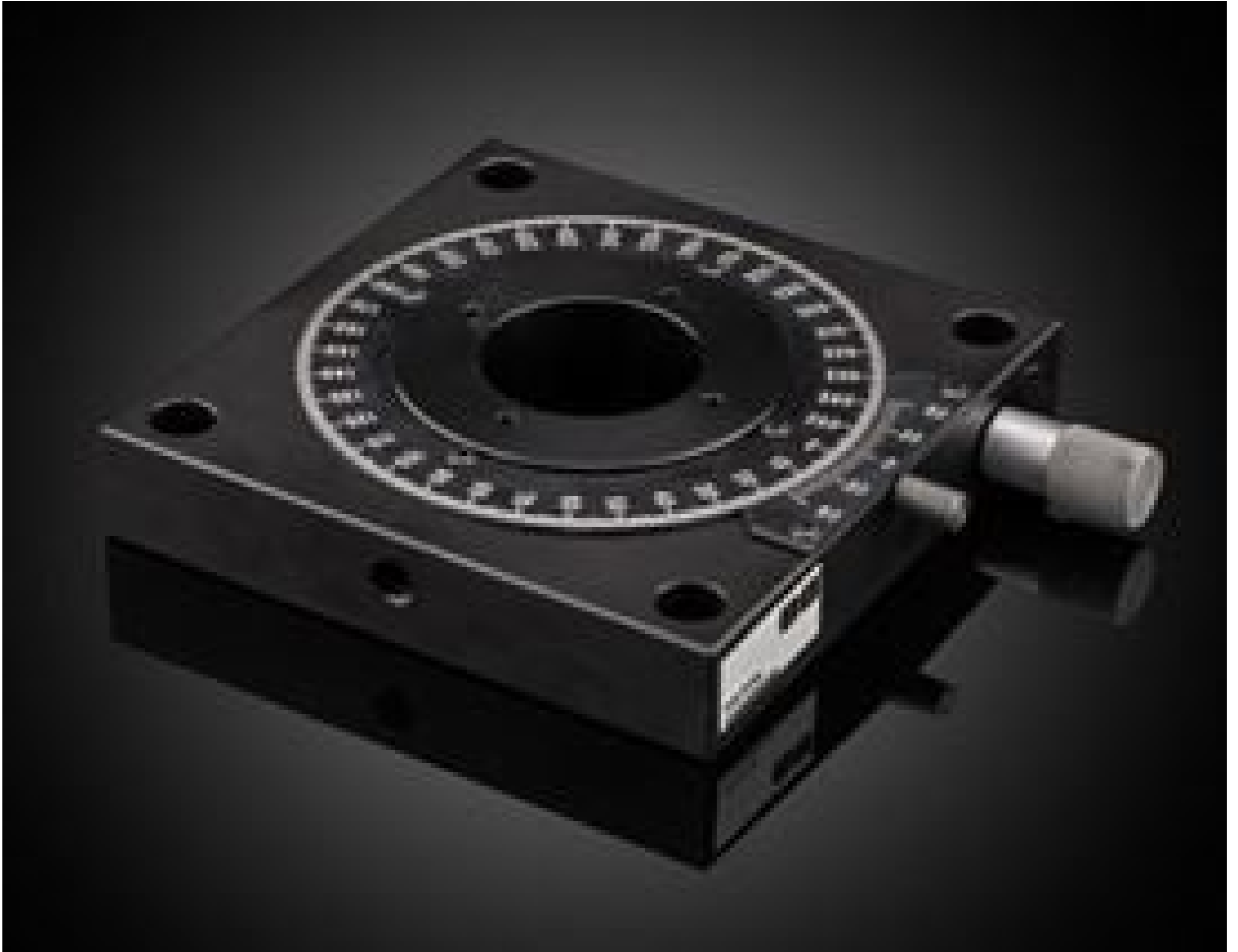


[See all 1 Products in Family](#)

2.75" Dia. Heavy Load Rotary Stage, English



#13-773: 2.75" Dia. Heavy Load Rotary Stage, Metric

Stock **#38-195** [CONTACT US](#)

⊖ 1 ⊕ C\$1,897⁰⁰

ADD TO CART

Volume Pricing

| | |
|------------|-------------------------------|
| Qty 1+ | C\$1,897.00 each |
| Need More? | Request Quote |

Product Downloads

General

English **Type:**

Physical & Mechanical Properties

Rotary **Type of Movement:**

120.7 x 120.7 **Stage Size (mm):**

360 **Travel (°):**

| | |
|---|-------------------------------------|
| 1.5" Dia. Thru | Center Hole: |
| Aluminum Top and Base; Steel/bronze Worm Gear Drive | Construction: |
| 120:1 | Gear Drive Ratio: |
| 6 (Vernier) | Increments (arcmin): |
| 25 | Load Capacity, Normal (lbs): |
| 2 | Weight (lbs): |
| 2.75 (69.8mm) | Table Diameter (inches): |

Hardware & Interface Connectivity

| | |
|-----------|-----------------------|
| Worm Gear | Type of Drive: |
|-----------|-----------------------|

Threading & Mounting

| | |
|-----------------------------|--------------------------|
| (4) 10-32 on 2.0" Dia. B.C. | Mounting Threads: |
|-----------------------------|--------------------------|

Regulatory Compliance

| | |
|-----------|------------------------------------|
| Compliant | RoHS 2015: |
| View | Certificate of Conformance: |

Product Details

- Normal Load Capacity of 25lb (11.3kg) for heavy duty applications
- Precision Worm Gear Drive
- Compatible with Metric and English 5" Ball Stages

Heavy Load Capacity Rotary Positioning Stages provide smooth, continuous adjustment over a full 360° travel range. A precision worm gear drive allows exact angular positioning of the rotation stage, and a position locking knob allows the stage to be positively locked in place. This heavy duty rotation stage offers a 2.75" diameter stage with a calibrated dial and ±60 arcminute Vernier scale. Heavy Load Capacity Rotary Positioning Stages can be combined with [metric](#) and [English](#) stages that have mounting holes on 4.0" centers (5" ball stages) for multi-axis set ups. These stages have a load capacity of 25lb/11.3kg for heavy duty applications.

Technical Information

