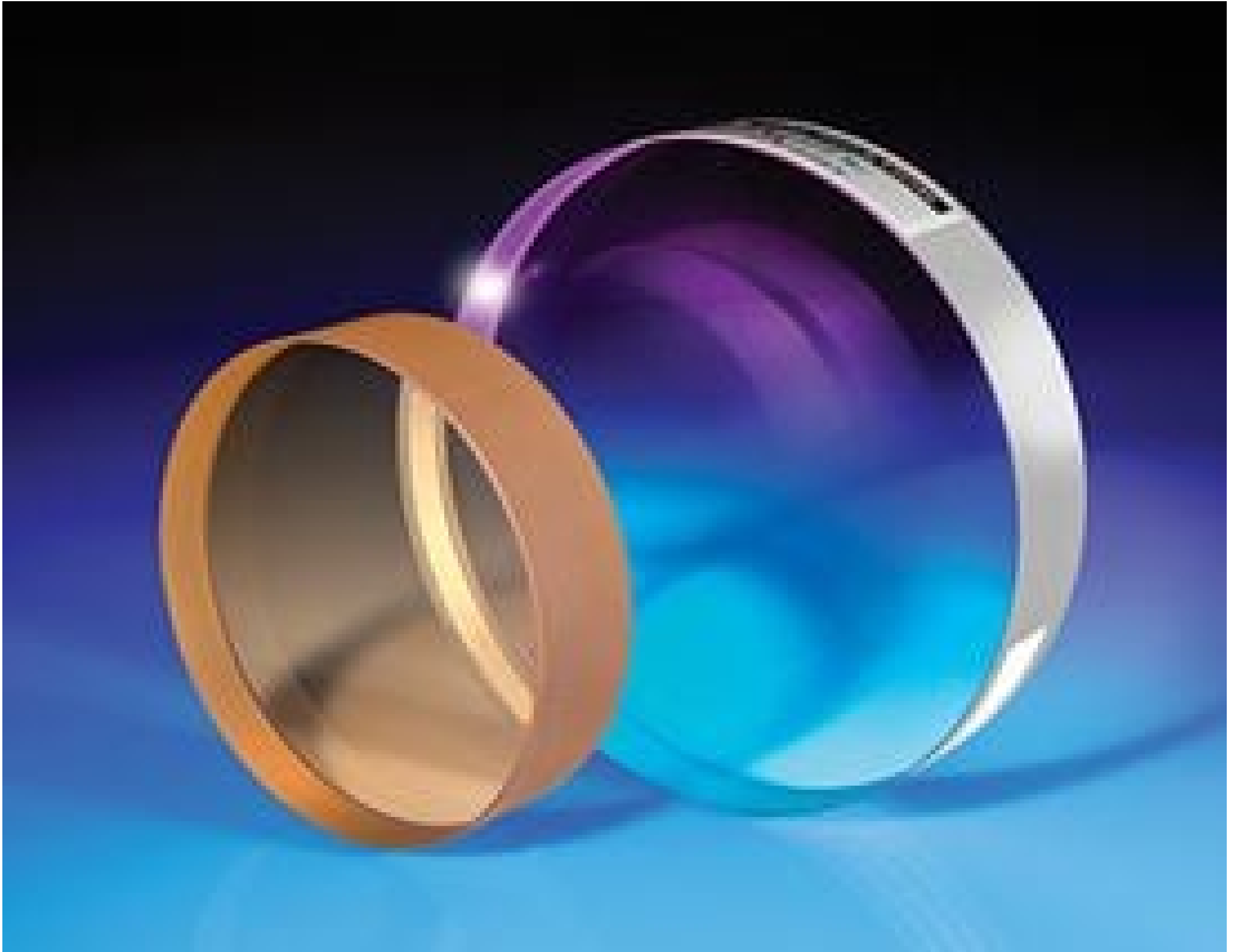


[See all 39 Products in Family](#)

## TECHSPEC® 304.8mm Dia. $\lambda/20$ Fused Silica Optical Flat



Stock #65-880-000 **9 In Stock**

1 **C\$18,312<sup>00</sup>**

**ADD TO CART**

### Volume Pricing

Qty 1-2	C\$18,312.00 each
Qty 3-5	C\$16,268.00 each
Qty 6-9	C\$15,316.00 each
Need More?	<a href="#">Request Quote</a>

### Product Downloads

#### General

Interferometry Window **Type:**

Includes a certificate of calibration. **Note:**

#### Physical & Mechanical Properties

274.30	<b>Clear Aperture CA (mm):</b>
12.00 +0.00/-0.04	<b>Diameter (inches):</b>
304.80 +0.00/-1.00	<b>Diameter (mm):</b>
1.50 ±0.10	<b>Thickness (inches):</b>
38.10 ±2.5	<b>Thickness (mm):</b>
≤3	<b>Parallelism (arcmin):</b>
Protective as needed	<b>Bevel:</b>
Single Surface	<b>Construction:</b>
Fine Ground	<b>Edges:</b>
0.16	<b>Poisson's Ratio:</b>
73	<b>Young's Modulus (GPa):</b>
522.00	<b>Knoop Hardness (kg/mm<sup>2</sup>):</b>

## Optical Properties

Uncoated	<b>Coating:</b>
Clear	<b>Color:</b>
<b>Fused Silica</b>	<b>Substrate:</b> <input type="checkbox"/>
1.458	<b>Index of Refraction (n<sub>d</sub>):</b>
60-40	<b>Surface Quality:</b>
67.8	<b>Abbe Number (v<sub>d</sub>):</b>
200 - 2200	<b>Wavelength Range (nm):</b>
λ/20	<b>Surface Flatness (P-V):</b>

## Material Properties

2.20	<b>Density (g/cm<sup>3</sup>):</b>
0.52 (+5 to +35°C) 0.57 (0 to +200°C) 0.48 (-100 to +200°C)	<b>Coefficient of Thermal Expansion CTE (10<sup>-6</sup>/°C):</b>

## Regulatory Compliance

<b>Compliant</b>	<b>RoHS 2015:</b>
<b>Compliant</b>	<b>Reach 211:</b>
<b>View</b>	<b>Certificate of Conformance:</b>

## Product Details

- Sizes Ranging from ½" Diameter to 14" Diameter
- Each λ/20 Flat 76.2mm and Larger Includes a Certificate of Calibration
- Available with Standard Metallic Mirror Coatings: [λ/10 and λ/20 Mirrors](#)

TECHSPEC® Single Surface Optical Flats are used as a reference (test plate) against which the flatness of an unknown surface may be compared. Each piece is precision polished by our master opticians and tested on a Zygo interferometer to insure the surface flatness. The secondary surfaces of our single surface flats are pitch polished to window quality for viewing the interference pattern. TECHSPEC Single Surface Optical Flats ship in a durable storage case for permanent protection. λ/20 flats that are 76.2mm or larger also include a certificate of calibration.