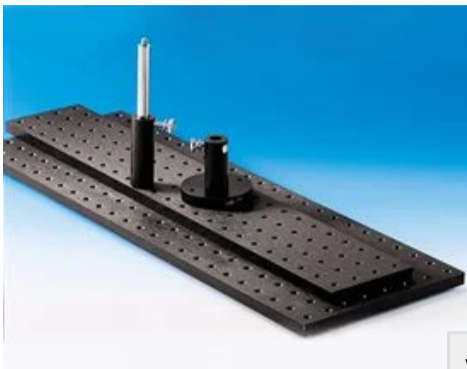


36" x 12", Breadboard



Stock #03-643 **20+ In Stock**

1

C\$687^{.40}

ADD TO CART

Volume Pricing	
Qty 1+	C\$687.40 each
Need More?	Request Quote

Product Downloads	
STEP:step	PDF Drawing:pdf
IGES:igs	eDrawing:eprt
EO Spec Sheet	

General

Type: English

Physical & Mechanical Properties

Thickness (inches): 0.5

Length (inches): 36.0

Width (inches): 12.0

Construction: Black Anodized Aluminum

Flatness (inches): 0.007" per 12"

Weight (lbs): 20.00

Number of Holes: 432.00

Threading & Mounting

Mounting Threads: (432) 1/4-20 on 1" Centerline ±0.001", on 0.5" Corners

Regulatory Compliance

RoHS 2015: **Compliant**

Certificate of Conformance: [View](#)

Reach 250: **Compliant**

Product Details

- Provide Stable Platform for Experiments and Test Configurations
- 1/4-20 TPI or M6 Tapped Holes for Various Mounting
- Black Anodized Aluminum

English and Metric Breadboards utilize 1/4"-20, or M6 tapped holes spaced 1" and 25mm apart, respectively, allowing for the creation of customizable benchtop systems. These breadboards are compatible with most optics and photonics mounting solutions. They feature a black anodized finish which reduces reflections from the breadboard and back into the system. English and Metric Breadboards are available in multiple sizes, making it possible to create either compact or large, expansive systems. These breadboards are an ideal platform for any system application.

Related Products



Optical Breadboard Accessories



Breadboard Handles



Post Holders



Slotted 2" x 3" Base Plates

Frequently Purchased Together



#03-638 - 24" x 4", Breadboard
C\$285.60

Qty



#03-640 - 24" x 12", Breadboard
C\$541.80

Qty



#03-644 - 1/4-20 x 1/2"
Setscrew, 12/Pack
C\$17.15

Qty



#03-639 - 24" x 8", Breadboard
C\$417.20

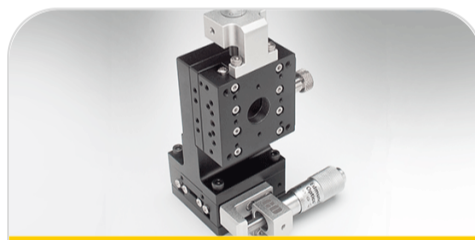
Qty



Resources

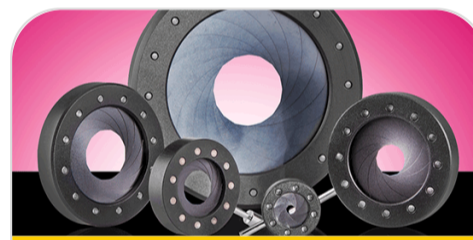
Media Type

- FAQ
- Glossary
- Application Note
- Trending in Optics
- Video



? FAQ

Do you have any components that would...



? FAQ

Do your iris diaphragms have mounts for...



GLOSSARY
Axial Runout



GLOSSARY
Concentricity



GLOSSARY
Inverted Load Capacity



GLOSSARY
Tangent Arm Drive

[View More](#)
