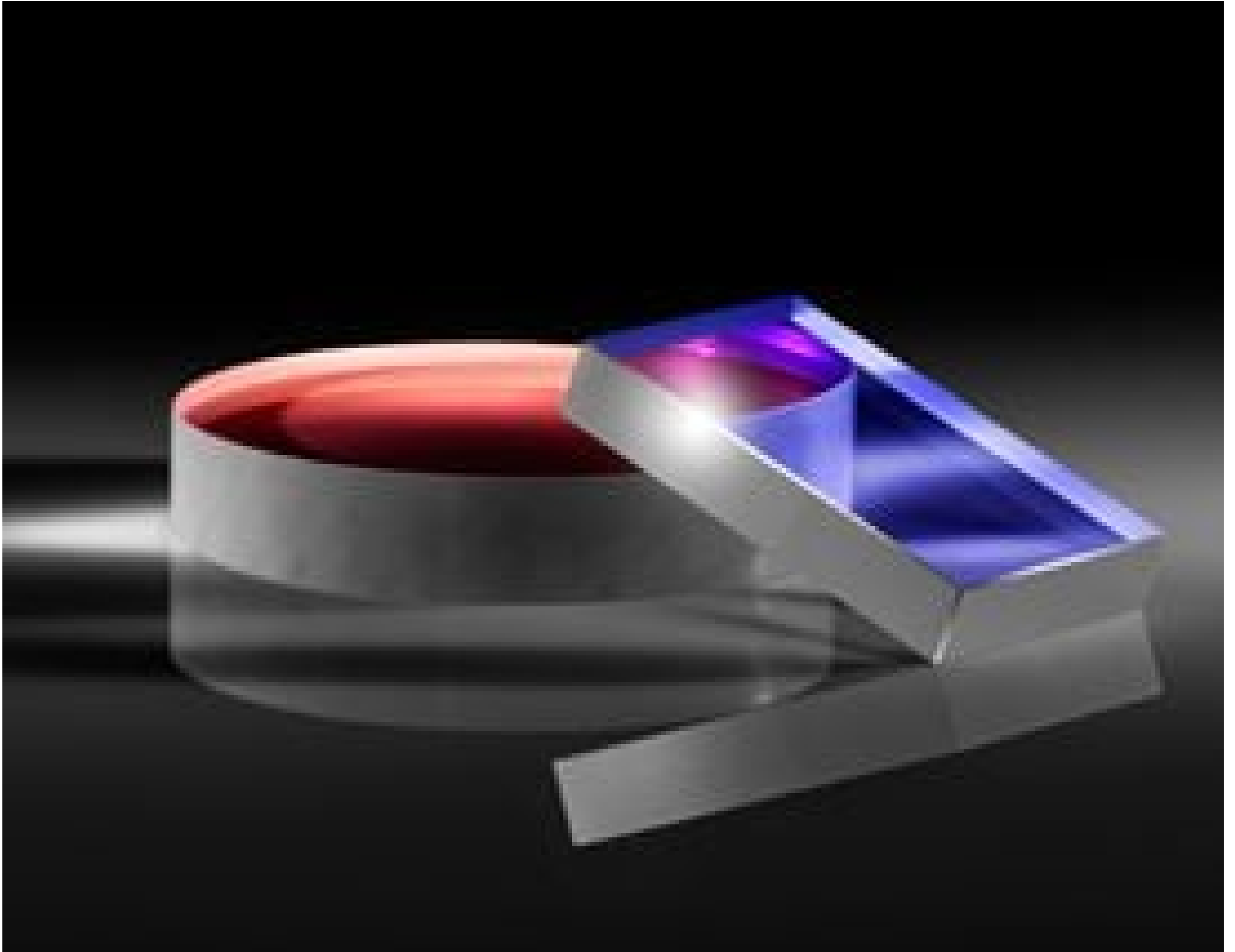


[See all 22 Products in Family](#)

TECHSPEC® 38.1 x 25.4mm Laser Mirror Substrate



TECHSPEC® Laser Mirror Substrates

Stock **#37-728** [CONTACT US](#)

⊖ 1 ⊕ C\$229⁰⁰

ADD TO CART

| Volume Pricing | |
|----------------|-------------------------------|
| Qty 1-10 | C\$229.60 each |
| Qty 11-25 | C\$201.60 each |
| Qty 26-50 | C\$179.20 each |
| Need More? | Request Quote |

Product Downloads

General

Laser Mirror Substrate **Type:**

Physical & Mechanical Properties

<3 **Parallelism (arcmin):**

85 **Clear Aperture (%):**

| | |
|------------------------------------|--------------------------------|
| Commercial Polish | Back Surface: |
| 38.1 x 25.4 +0.00/-0.10 | Dimensions (mm): |
| 6.35 ±0.20 | Thickness (mm): |
| 32.39 x 21.59 | Clear Aperture CA (mm): |
| Ground, protective bevel as needed | Edges: |

Optical Properties

| | |
|---|--|
| 10-5 | Surface Quality: |
| λ/10 | Surface Flatness (P-V): |
| Uncoated | Coating: |
| Fused Silica (Corning 7980) | Substrate: <input type="checkbox"/> |

Regulatory Compliance

| | |
|---------------------------|------------------------------------|
| Compliant | RoHS 2015: |
| Compliant | Reach 209: |
| View | Certificate of Conformance: |

Product Details

- λ/10 and λ/20 Surface Flatness and 10-5 Surface Quality
- High Quality Fused Silica Substrates
- Imperial Sizes with Circular or Rectangular Geometries
- [Window Substrates](#) Also Available

TECHSPEC® Laser Mirror Substrates are manufactured from high quality fused silica and are designed for use with high power laser sources. These mirrors feature excellent surface specifications, including λ/10 and λ/20 surface flatness and 10-5 surface quality, to limit the possibility of reduced performance due to surface defects. The high surface quality of these mirror blanks also makes them ideal for use in demanding intra-cavity laser applications. TECHSPEC Laser Mirror Substrates are available in standard imperial sizes, with either circular or rectangular geometries. Please contact us if your application requires a custom size laser mirror substrate.

Compatible Mounts