

[See all 6 Products in Family](#)

## 40mm Dia. x 200mm FL, MgF<sub>2</sub> Coated, DCX N-K5 Lens



Stock #32-911 **CLEARANCE** 20+ In Stock

[Other Coating Options](#)

⊖ 1 ⊕ C\$29<sup>93</sup>

**ADD TO CART**

### Volume Pricing

Qty 1+	C\$29.93 each
Need More?	<a href="#">Request Quote</a>

### Product Downloads

#### General

Double-Convex Lens **Type:**

#### Physical & Mechanical Properties

40.00 +0.00/-0.10 **Diameter (mm):**

<1 **Centering (arcmin):**

8.00 ±0.10 **Center Thickness CT (mm):**

6.07	Edge Thickness ET (mm):
39	Clear Aperture CA (mm):
Protective as needed	Bevel:
<b>Optical Properties</b>	
200.00 @ 587.6nm	Effective Focal Length EFL (mm):
197.36	Back Focal Length BFL (mm):
MgF <sub>2</sub> (400-700nm)	Coating:
R <sub>avg</sub> ≤ 1.75% @ 400 - 700nm	Coating Specification:
N-K5	Substrate: <input type="checkbox"/>
40-20	Surface Quality:
1.5λ	Power (P-V) @ 632.8nm:
λ/4	Irregularity (P-V) @ 632.8nm:
±1	Focal Length Tolerance (%):
5.00	f#:
0.10	Numerical Aperture NA:
400 - 700	Wavelength Range (nm):
10 J/cm <sup>2</sup> @ 532nm, 10ns	Damage Threshold, By Design: <input type="checkbox"/>

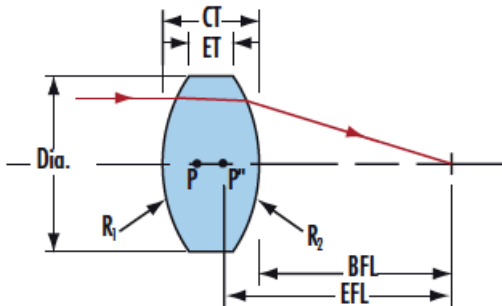
<b>Regulatory Compliance</b>	
Compliant	Reach 224:
View	Certificate of Conformance:

## Product Details

- N-K5 Substrate
- Various Anti-Reflection (AR) Coatings
- PCX and DCX Options Available

N-K5 Lenses are available in various diameters, focal lengths, as well as Plano-Convex and Double-Convex form factors. Anti-reflective coatings covering the VIS to NIR make these ideal for multiple applications.

## Technical Information



## Coating Curves

## Compatible Mounts

