

[See all 12 Products in Family](#)

## 4.6" Red Advanced Illumination High Intensity Ring Light

See More by [Advanced Illumination](#)



Stock #88-489 [CONTACT US](#)

- 1 + C\$1,211<sup>00</sup>

**ADD TO CART**

### Volume Pricing

Qty 1+	C\$1,211.00 each
Need More?	<a href="#">Request Quote</a>

**Note:** This item requires accessories for use | [Learn More](#)

### Product Downloads

### General

RL127-625-IC **Model Number:**

50,000 **LED Lifetime (hours):**

1.00 **Number of Channels:**

LED Illuminator	<b>Type of Illumination:</b>
<b>Note:</b> Optional Manual Intensity Adjustment <a href="#">#86-887</a> and <a href="#">#89-555</a> are Available	
Advanced Illumination	<b>Manufacturer:</b>
Ring Light	<b>Geometry:</b>
Constant	<b>Illumination Mode:</b>
<b>Physical &amp; Mechanical Properties</b>	
116.80	<b>Diameter (mm):</b>
19.1	<b>Height (mm):</b>
M67 x 0.75	<b>Inner Diameter (mm):</b>
116.8	<b>Outer Diameter (mm):</b>
304.00	<b>Weight (g):</b>
<b>Optical Properties</b>	
Red	<b>Color:</b>
625	<b>Wavelength (nm):</b>
100 - 300	<b>Working Distance (mm):</b>
<b>Hardware &amp; Interface Connectivity</b>	
Flying Leads	<b>Connector:</b>
<b>Power Supply:</b> Power Supply Required and Sold Separately: USA: <a href="#">#66-855</a> Europe: <a href="#">#66-855</a> Japan: <a href="#">#89-513</a> Korea: <a href="#">#33-773</a> China: <a href="#">#66-855</a>	
<b>Environmental &amp; Durability Factors</b>	
0 to 60	<b>Operating Temperature (°C):</b>
IP67	<b>Environmental Rating:</b>
<b>Regulatory Compliance</b>	
<a href="#">Compliant</a>	<b>RoHS 2015:</b>
<a href="#">View</a>	<b>Certificate of Conformance:</b>
<a href="#">Contains SVHC(s)</a>	<b>Reach 233:</b>

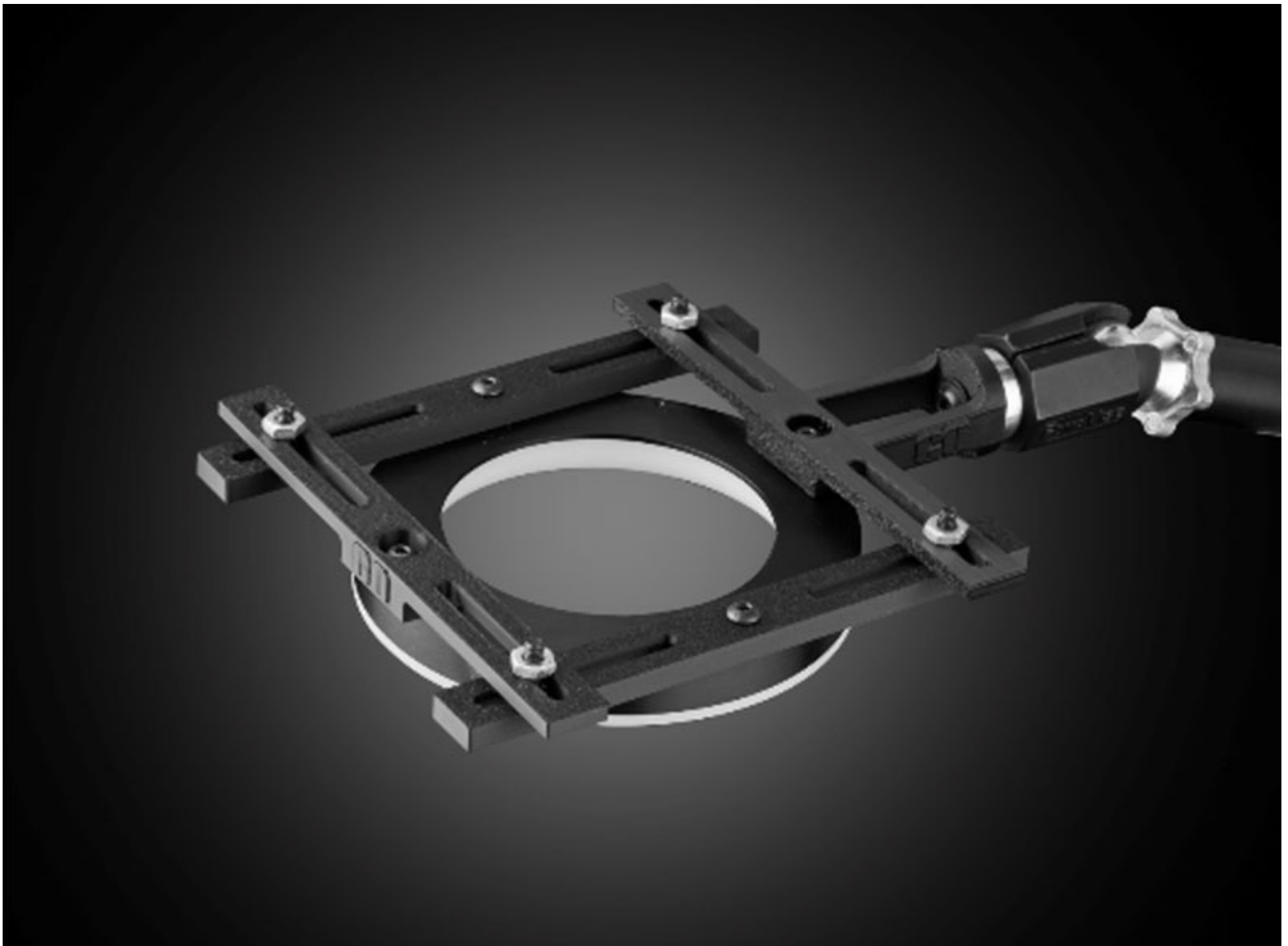
## Product Details

- Slim Profile to Ease System Integration
- High Brightness LEDs
- Multiple Size, Wavelength, and Working Distance Options

Advanced Illumination High Intensity Ring Lights utilize an arrangement of high brightness LEDs to precisely illuminate a wide variety of imaging applications. Advanced Illumination High Intensity Ring Lights feature a slim profile to ease system integration, and are available in a variety of sizes, wavelengths, and working distance options. A manual intensity adjustment option is also available for added flexibility. 4.6" and 6" models are IP67 compliant. An adapter is also available for mounting the 2.95" ring light to M25 x 0.5 lenses.

**Note:** Required 24V power supply [#66-855](#). [Accessories for Advanced Illumination products](#) are available and sold separately.

[3D-Printable Mount Files](#)



Ring Light Configuration

[Download Now](#)

Designed for use with the [Articulating Arm Mounting Systems](#), these 3D-printed mounts allow easy positioning of lights in brightfield or darkfield setups. The design is based on mounting illumination to 1/4-20" breadboards or into 80/20 extrusion systems, but can be adapted based on user needs. Mounts are available for ring, bar, line, and inline spot lights.



Application Note

Illumination Mounts for Machine Vision Applications  
[Read](#)



Video

Assembly of 3D Printed Mounts for Common Illumination Geometries  
[Watch](#)