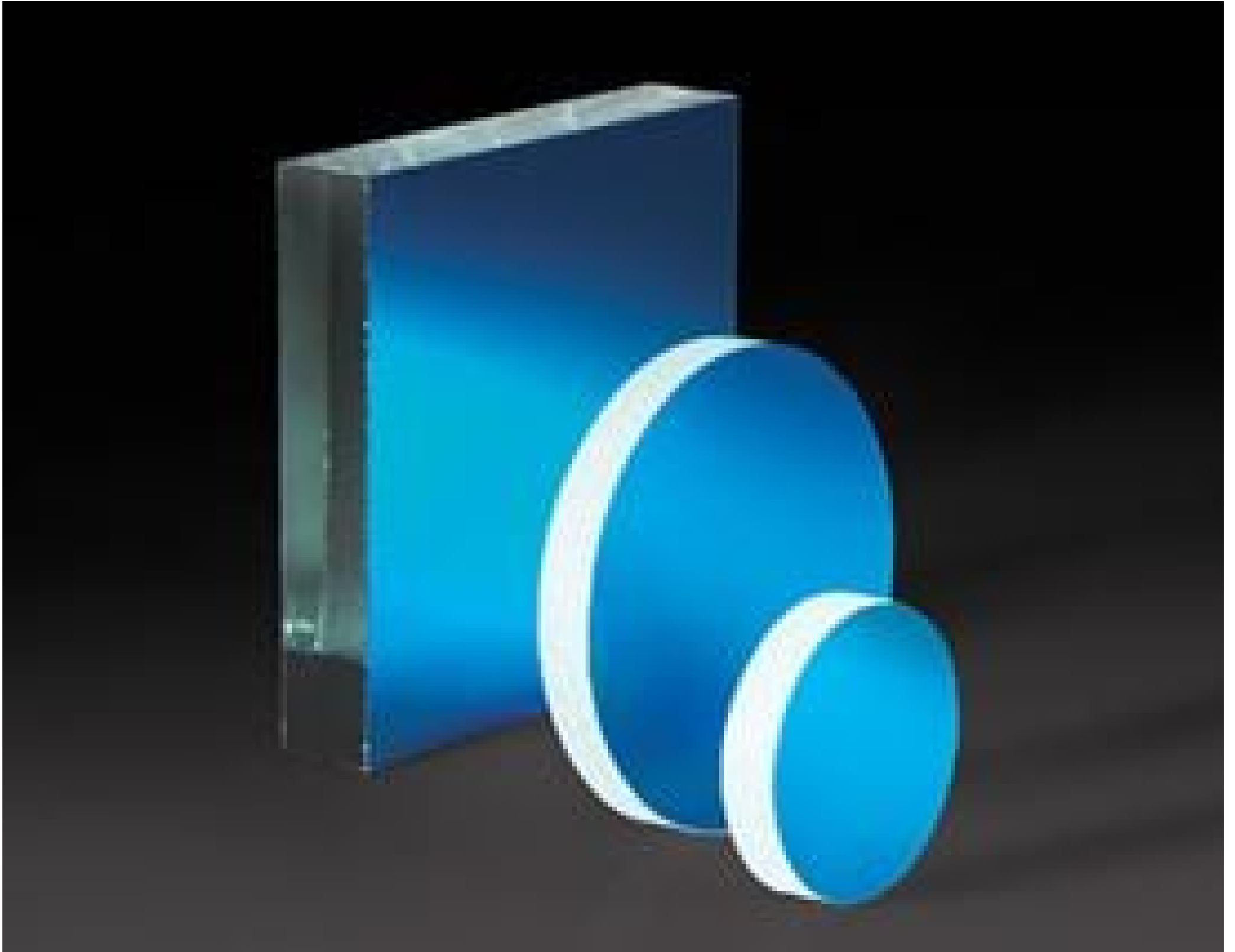


50 x 50mm Laser Diode Mirror



Stock **#43-533** **20+ In Stock**

- 1 + C\$63^{.70}

ADD TO CART

Volume Pricing	
Qty 1-10	C\$63.70 each
Qty 11-24	C\$49.00 each
Need More?	Request Quote

Product Downloads

General

Flat Mirror **Type:**

Physical & Mechanical Properties

3.00 **Thickness (mm):**

50.0 x 50.0 **Dimensions (mm):**

±0.25 **Dimensional Tolerance (mm):**

50.00	Length (mm):
50.00	Width (mm):
Optical Properties	
Dielectric	Coating Type:
Dielectric Mirror (500-700nm)	Coating:
633	Design Wavelength DWL (nm):
Float Glass	Substrate: □
R _{abs} >97% @633nm	Coating Specification:
80-50	Surface Quality:

Environmental & Durability Factors	
ML-C-48497A	Durability:

Regulatory Compliance	
Compliant	RoHS 2015:
View	Certificate of Conformance:
Compliant	Reach 247:

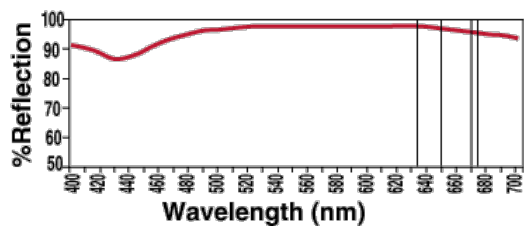
Product Details

- Over 95% Reflectance of Visible Laser Diode Light
- Ideal for Multiple Reflection Systems
- Coating Optimized for 633nm at 45° AOI

Visible Laser Diode Mirrors are specially coated to attain maximum reflection of visible laser diodes. Optimized for 633nm at a 45° angle of incidence, these mirrors provide 97% reflectance versus only 85 - 90% for standard first surface mirrors. This reduced loss is particularly important in multiple reflection systems, where loss can significantly impact system efficiency. Visible Laser Diode Mirrors feature a float glass substrate and are ideal for multiple reflection systems.

Technical Information

Visible Laser Diode Mirror Reflectance at 45°



@ 500nm	95.0%
@ 550nm	97.0%
@ 600nm	97.5%
@ 633nm	97.0%
@ 635nm	97.0%
@ 650nm	96.5%
@ 670nm	96.0%
@ 675nm	95.0%
@ 700nm	94.5%

Quote Your Size

Compatible Mounts

