

[See all 17 Products in Family](#)

# 50mm, UV 365nm, MicroBrite Brightfield Ring Light

See More by [Advanced Illumination](#)



Stock #18-573 [CONTACT US](#)

⊖ 1 ⊕ C\$1,743<sup>00</sup>

**ADD TO CART**

Volume Pricing	
Qty 1+	C\$1,743.00 each
Need More?	<a href="#">Request Quote</a>

Product Downloads

**General**

**Model Number:**  
RL208M050365IC

**LED Lifetime (hours):**  
50,000

**Type of Illumination:**  
LED Illuminator

**Note:**  
Optional Manual Intensity Adjustment [#86-887](#) and [#89-555](#) are Available

**Manufacturer:**

Advanced Illumination

Ring Light

Geometry:

Constant

Illumination Mode:

## Physical & Mechanical Properties

19.09

Height (mm):

50

Inner Diameter (mm):

95.34

Outer Diameter (mm):

50.00 x 95.34 x 19.09

Dimensions (mm):

299

Weight (g):

## Optical Properties

UV

Color:

365

Wavelength (nm):

## Electrical

0.12A

Maximum Input Current:

## Hardware & Interface Connectivity

Flying Leads

Connector:

24V

Input Voltage (V):

Power Supply:

Power Supply Required and Sold Separately.

USA: [#66-855](#)

Europe: [#66-855](#)

Japan: [#89-513](#)

Korea: Not Available

China: [#66-855](#)

## Threading & Mounting

M4 x4

Mounting Threads:

## Environmental & Durability Factors

0 - 60

Operating Temperature (°C):

IP50

Environmental Rating:

## Regulatory Compliance

[Exempt](#)

RoHS 2015:

[View](#)

Certificate of Conformance:

[Contains SVHC\(s\)](#)

Reach 233:

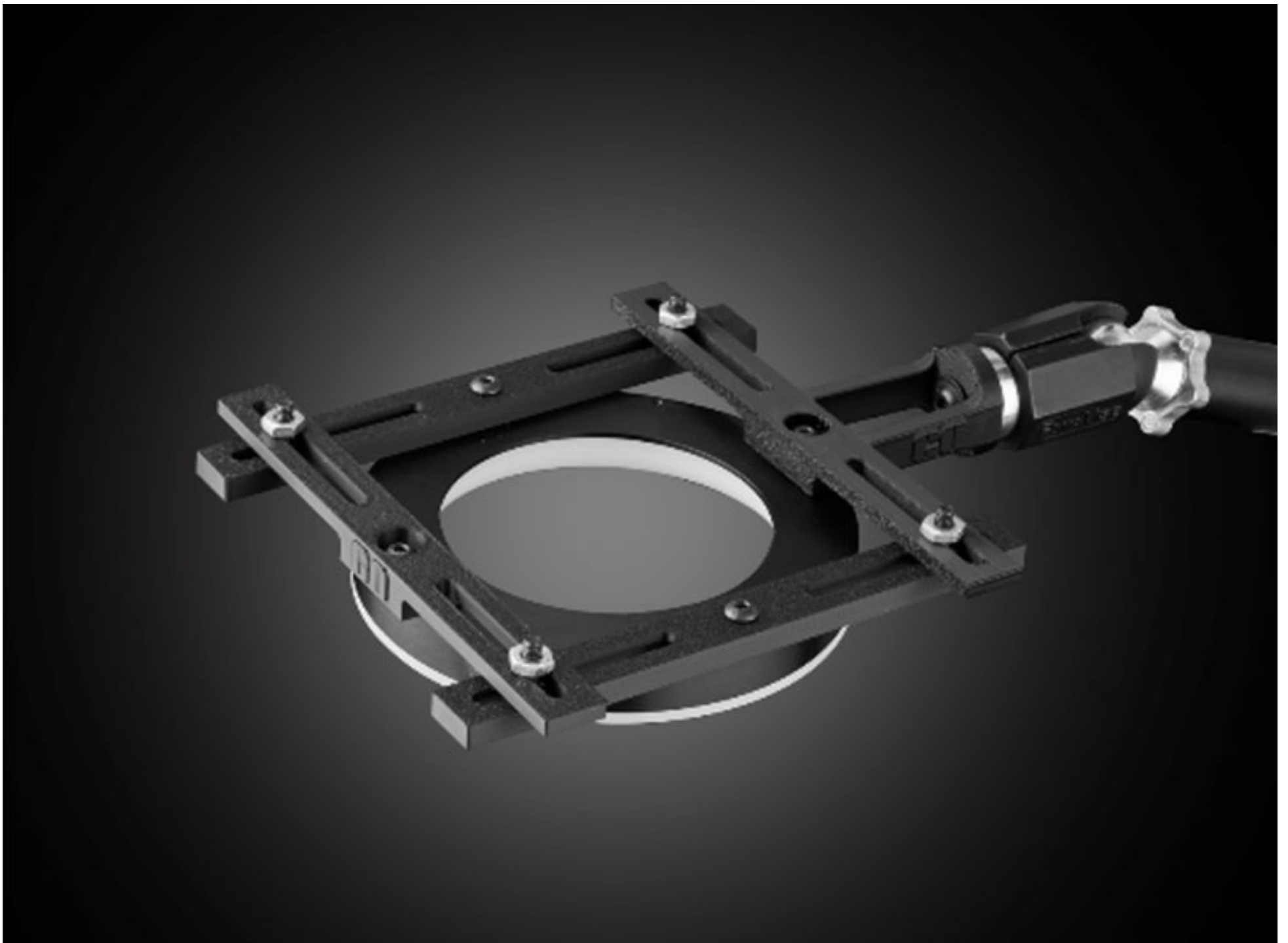
## Product Details

- High Intensity Output up to 41,000 Lux
- 2"-10" Working Distance (Size Dependent)
- Full Range of Wavelengths Available
- Optional Manual Intensity Adjustments ([#86-887](#) and [#89-555](#)) Recommended

Advanced Illumination MicroBrite Brightfield Ring Lights offer high intensity machine vision lights in a compact form factor. These ring lights produce an intense light output up to 41,000 Lux at a working distance of 180mm, are available in a full range of wavelengths, and are offered in two standard sizes. These ring lights provide object coverage from 2" to 6" depending on working distance. Advanced Illumination MicroBrite Brightfield Ring Lights are ideal for standard, around-the-lens applications requiring high-intensity illumination sources such as high-speed inspections, factory automation, and machine vision.

**Note:** Requires 24V power supply [#66-855](#). Manual Intensity Adjustment [#86-887](#) and [#89-555](#) are recommended and sold separately.

3D-Printable Mount Files



Ring Light Configuration

[Download Now](#)

Designed for use with the [Articulating Arm Mounting Systems](#), these 3D-printed mounts allow easy positioning of lights in brightfield or darkfield setups. The design is based on mounting illumination to ¼-20" breadboards or into 80/20 extrusion systems, but can be adapted based on user needs. Mounts are available for ring, bar, line, and inline spot lights.



Application Note

Illumination Mounts for Machine Vision Applications

[Read](#) 



Video

Assembly of 3D Printed Mounts for Common Illumination Geometries

[Watch](#) 