

[See all 11 Products in Family](#)

530nm, Strobed, Coaxial LED Spot Light

See More by [Advanced Illumination](#)



Stock #83-304 [CONTACT US](#)

⊖ 1 ⊕ C\$924⁰⁰

ADD TO CART

| Volume Pricing | |
|----------------|-------------------------------|
| Qty 1+ | C\$924.00 each |
| Need More? | Request Quote |

Note: This item requires accessories for use | [Learn More](#)

Product Downloads

General

| | |
|-------------------|------------------------------|
| SL112-530-I3S | Model Number: |
| 50,000 | LED Lifetime (hours): |
| 1 High Brightness | Number of LEDs: |
| LED Illuminator | Type of Illumination: |

Advanced Illumination **Manufacturer:**

Spot Light **Geometry:**

Strobed **Illumination Mode:**

Physical & Mechanical Properties

42.5 **Weight (g):**

Optical Properties

Green **Color:**

530 **Wavelength (nm):**

±10 **Light Distribution (%):**

Hardware & Interface Connectivity

Flying Leads **Connector:**

Power Supply:
Power Supply Required and Sold Separately.
USA: [#66-855](#)
Europe: [#66-855](#)
Japan: [#89-513](#)
Korea: [#33-773](#)
China: [#66-855](#)

1.5 **Length of Cable (m):**

Environmental & Durability Factors

0 to 60 **Operating Temperature (°C):**

Regulatory Compliance

[Compliant](#) **RoHS 2015:**

[View](#) **Certificate of Conformance:**

[Contains SVHC\(s\)](#) **Reach 233:**

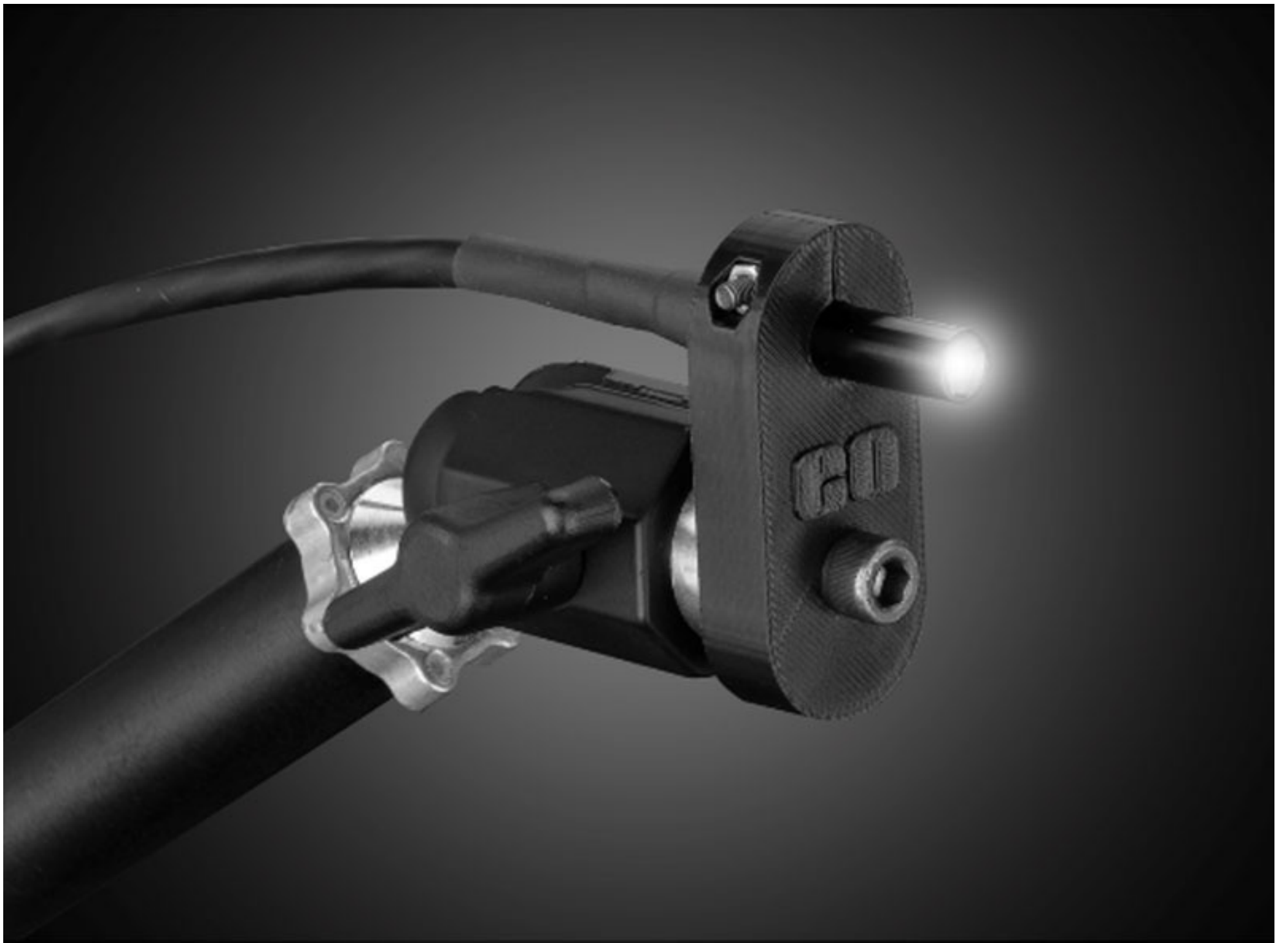
Product Details

- Compatible with 8mm or 1/4" (0.312") Fiber Illumination Ports
- Multiple Versions Offered

Advanced Illumination Coaxial LED Spot Light Illuminators are designed to fit into the common 8mm port found on many [in-line illumination lenses](#). These illuminators are a simple, compact lighting solution. Featuring state-of-the-art high intensity LEDs, these illuminators are ideal for even the most demanding illumination requirements. Advanced Illumination Coaxial LED Spot Light Illuminators have strobed options, allowing for different ways of lighting. The illuminators are available in white, blue, green, yellow, and red.

Note: Power supply ([#66-855](#)) is sold separately and required for operation. [Accessories for Advanced Illumination products](#) are available and sold separately for intensity control options.

[3D-Printable Mount Files](#)



Spot Light Configuration

**DOWNLOAD
NOW**

Designed for use with the [Articulating Arm Mounting Systems](#), these 3D-printed mounts allow easy positioning of lights in brightfield or darkfield setups. The design is based on mounting illumination to 1/4-20" breadboards or into 80/20 extrusion systems, but can be adapted based on user needs. Mounts are available for ring, bar, line, and inline spot lights.



Application Note

Illumination Mounts for Machine Vision Applications
[Read](#) 



Video

Assembly of 3D Printed Mounts for Common Illumination Geometries
[Watch](#) 