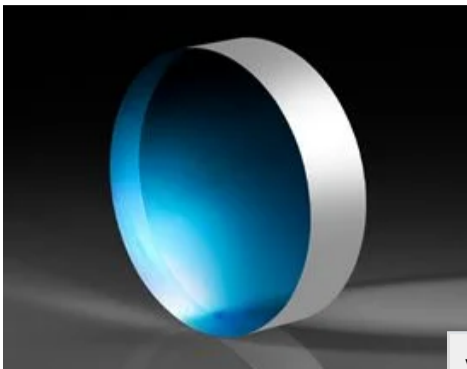


TECHSPEC® 6" Dia. $\lambda/10$ Fused Silica Dual Surface Flat



Stock #43-432 20+ In Stock

1 C\$4,172.⁰⁰

ADD TO CART



Volume Pricing	
Qty 1-5	C\$4,172.00 each
Qty 6-10	C\$3,752.00 each
Qty 11-25	C\$3,549.00 each
Need More?	Request Quote

Product Downloads	
STEP:step	PDF Drawing:pdf
IGES:igs	eDrawing:eprt
EO Spec Sheet	Download All

General

Type: Interferometry Window	Type of Window: Glass
------------------------------------	------------------------------

Physical & Mechanical Properties

Clear Aperture CA (mm): 137.20	Diameter (inches): 6.00 ±0.04
Diameter (mm): 152.40 ±1.0	Thickness (inches): 1.00 ±0.08
Thickness (mm): 25.40 ±2.0	Parallelism (arcmin): <3
Bevel: Protective as needed	Construction: Dual Surface
Edges: Fine Ground	Poisson's Ratio: 0.16
Young's Modulus (GPa): 73	Knoop Hardness (kg/mm²): 522.00

Optical Properties

Coating: Uncoated	Substrate: Fused Silica
Index of Refraction (n_d): 1.458	Surface Quality: 60-40
Abbe Number (v_d): 67.8	Wavelength Range (nm): 200 - 2200
Surface Flatness (P-V): $\lambda/10$	

Material Properties

Density (g/cm³): 2.20	Coefficient of Thermal: 0.52 (+5 to +35°C) 0.57 (0 to
---	---

Expansion CTE +200°C)
(10⁻⁶/°C): 0.48 (-100 to
+200°C)

Regulatory Compliance

RoHS 2015: **Compliant**

Reach 211: **Compliant**

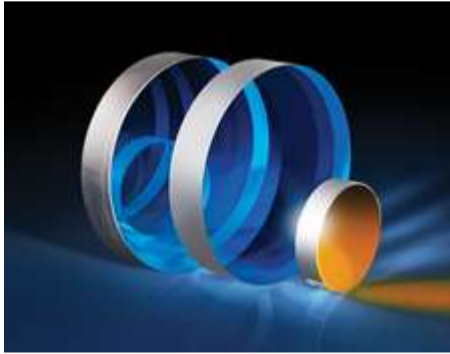
Certificate of Conformance: **View**

Product Details

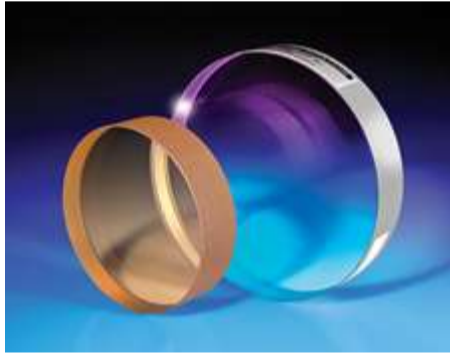
- $\lambda/10$ and $\lambda/20$ Surface Flatness Options
- Each $\lambda/20$ Flat 76.2mm and Larger Includes a Certificate of Calibration
- Extended Lifetime in Contact Measurement Applications
- **Single Surface Optical Flats** Also Available

TECHSPEC® Precision Dual Surface Optical Flats are precision ground and polished to the stated accuracies on both surfaces so that either face may be used for test applications. Both surfaces are tested and certified by our Zygo Interferometer. Each flat ships in a durable storage case for permanent protection. TECHSPEC® Precision Dual Surface Optical Flats specified for $\lambda/20$ flatness that are 76.2mm or larger also include a certificate of calibration. These dual surface flats are uncoated and offered in diameters ranging from 25.40 to 304.80mm.

Related Products



Precision Optical Flat Mirrors

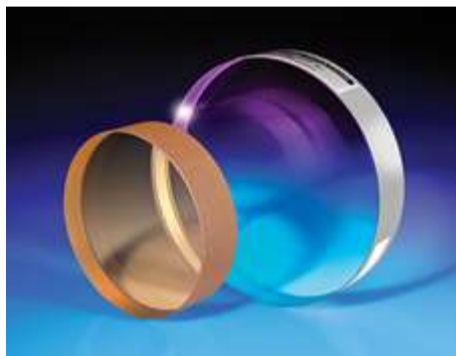


Single Surface Optical Flats



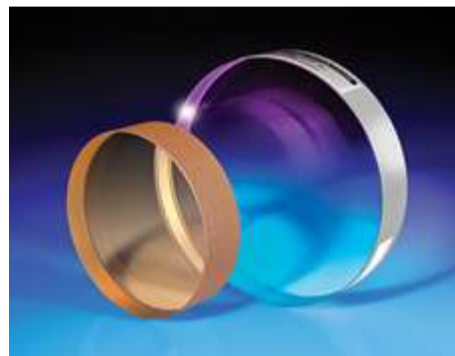
Optical Cell Kinematic Mounts

Frequently Purchased Together



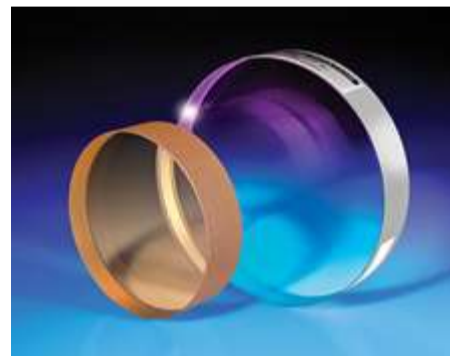
#01-612-000 - 152.4mm Dia. $\lambda/10$
Fused Silica Optical Flat
C\$2,898.00

Qty



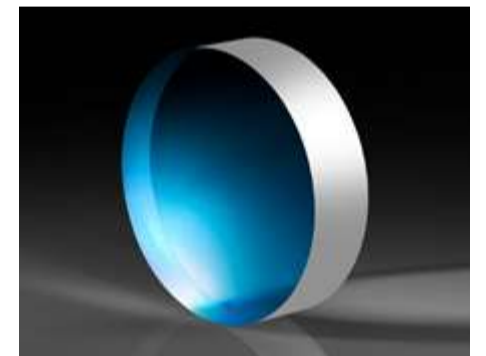
#31-390-000 - 203.2mm Dia. $\lambda/10$
Fused Silica Optical Flat
C\$6,006.00

Qty



#47-575-000 - 152.4mm Dia. $\lambda/20$
Fused Silica Optical Flat
C\$4,165.00

Qty



#48-132 - 4" Dia. $\lambda/20$ Fused Silica
Dual Surface Flat
C\$2,401.00

Qty

Resources

Media Type

- Application Note
 Technical Tool

APPLICATION NOTE
Anti-Reflection (AR) Coatings

APPLICATION NOTE
An Introduction to Optical Coatings

TECHNICAL TOOL
Beam Displacement Calculator

- Video
- Glossary
- FAQ



APPLICATION NOTE

Understanding Optical Windows

VIDEO

Optical Windows Review

APPLICATION NOTE

Optical Glass

[View More](#)