

[See all 30 Products in Family](#)

750mm x 900mm, CleanBench Lab Table, Casters OnTrak Delivery

See More by [TMC](#)



Stock **#90-112** NEW CONTACT US

⊖ 1 ⊕ C\$11,592.⁰⁰

ADD TO CART

Volume Pricing

Qty 1+	C\$11,592.00 each
Need More?	Request Quote

Product Downloads

General

Metric Type:

Note:
Casters are required when using OnTrak feature

Vibration Rating:
5 Hz Vertical = 70 - 85%, Horizontal = 75 - 90%
10 Hz Vertical = 90 - 97%, Horizontal = 90 - 97%

Physical & Mechanical Properties

50.40	Thickness (mm):
900.00	Length (mm):
750.00	Width (mm):
Construction:	
Top: Stainless Steel	
Core: All Steel, High Density, Cell-Sized Honeycomb Core	
Frame: Medium Texture Black Powder Coat	
Legs: Retractable Casters	
80 (nitrogen or air)	Feed Pressure (psi):
±0.005	Flatness (inches):
31.00	Height (inches):
Gross: 1400 Net: 350	Load Capacity (lbs):
600.00	Weight (lbs):

Threading & Mounting

M6 on 25 Centerline	Mounting Threads:
---------------------	--------------------------

Additional Info

Yes	Casters:
OnTrak Delivery	Delivery System:

Regulatory Compliance

View	Certificate of Conformance:
----------------------	------------------------------------

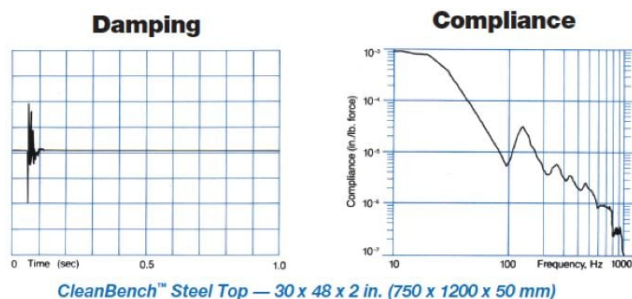
Product Details

- Greater Than 90% Isolation Efficiency
- Superior Honeycomb Structure
- Low Profile Thickness of 2"
- Stainless Steel, Oil-free, Spill Proof Optical Top

TMC™ CleanBench Low Profile Laboratory Tables designed for applications that demand high resolution and precision provide an excellent vibration-free work surface for loads up to 350lb. The Gimbal Piston™ isolators utilize patented pneumatic isolation techniques that are highly responsive to low-amplitude floor vibrations. Large disturbances, such as sudden load changes, are also eliminated within a few seconds. Both horizontal and vertical isolation are achieved down to very low input levels. The table top features a patented spill-proof, drilled and tapped mounting hole array available in 1/4-20 on 1" spacing or M6 on 25mm spacing. The spill proof top prevents penetration of the core of the table when hazardous chemicals are used. The stainless steel top construction features a highly dense, small cell-sized honeycomb design that provides stiffer and improved dampening with isolation efficiency greater than 90%. Sturdy aluminum height control valves allow for simple and precise manual height adjustment (±6mm) without the need of tools. Table legs include built-in fine thread screw jack levers that provide 13mm of travel for external adjustment. The base features a slightly domed shape to assure solid, wobble-free contact with the floor. Casters provide ease of transportation.

Note: Additional shipping charges may apply.

Technical Information

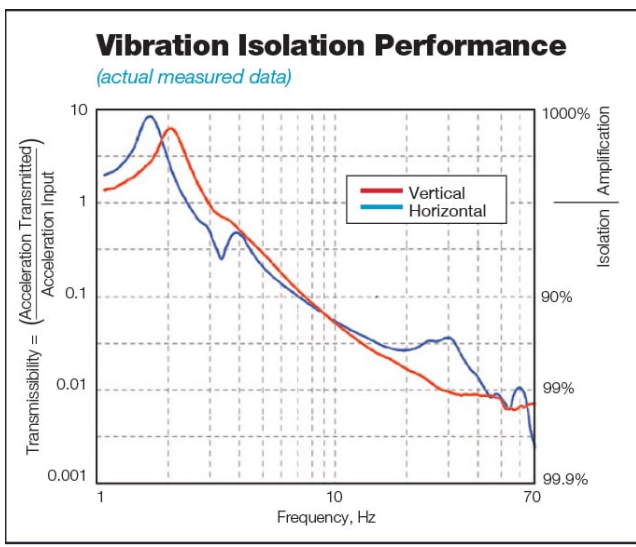


Structural Damping determines how quickly an excited resonance in a table top decays. The simplest way to measure damping is to hit the table top with a hammer and measure the decay with an accelerometer and oscilloscope or spectrum analyzer. The height of a resonance peak in the "compliance curve" also measures damping.

Compliance is a reciprocal measurement of the dynamic stiffness of a table top. The data are obtained by inputting a measured force to the table top with a calibrated hammer and measuring the resultant acceleration (or displacement) with an accelerometer. Compliance is the ratio of displacement to force expressed as a function of frequency.

Isolator Performance

All CleanBench tables incorporate TMC's Gimbal Piston Air Isolators as a standard feature. The Gimbal Piston has consistently shown to out-perform other air isolators in side-by-side testing. It offers outstanding low frequency vibration isolation in all axes and maintains its performance specifications even when subjected to extremely low input levels of excitation. Proprietary damping techniques allow the Gimbal Piston to stabilize relatively top-heavy payloads and quickly dissipate disturbances of the isolated table top.



;