

[See all 17 Products in Family](#)

880nm w/ Barrel Mount, Brightfield/Darkfield LED Ring Light w/ Barrel Mount (Recertified 05-P)

See More by [Advanced Illumination](#)



Stock #66-789-RCD-05P RECERTIFIED **1 In Stock**

C\$6,860⁰⁸

ADD TO CART

Volume Pricing	
Qty 1+	C\$6,860.08 each
Need More?	Request Quote

Note: This item requires accessories for use | [Learn More](#)

Product Downloads

General

Model Number:
 RL5064B-880-IC

LED Lifetime (hours):
 50,000

Number of LEDs:
 64.00

LED Illuminator	Type of Illumination:
Note: Optional Manual Intensity Adjustment #86-887 and #89-555 are Available	
Advanced Illumination	Manufacturer:
Ring Light	Geometry:
Constant	Illumination Mode:
Physical & Mechanical Properties	
100.00	Diameter (mm):
33.7	Height (mm):
55.5	Inner Diameter (mm):
100.00	Outer Diameter (mm):
Optical Properties	
IR	Color:
880	Wavelength (nm):
6 - 64	Working Distance (mm):
Electrical	
30.00	Maximum Trigger Frequency (Hz):
Hardware & Interface Connectivity	
Flying Leads	Connector:
Power Supply: Power Supply Required and Sold Separately. USA: #66-855 Europe: #66-855 Japan: #89-513 Korea: #33-773 China: #66-855	
Threading & Mounting	
Barrel Mount	Mount:
M4 x4	Mounting Threads:
Environmental & Durability Factors	
0-65	Operating Temperature (°C):
Regulatory Compliance	
Compliant	RoHS 2015:
View	Certificate of Conformance:

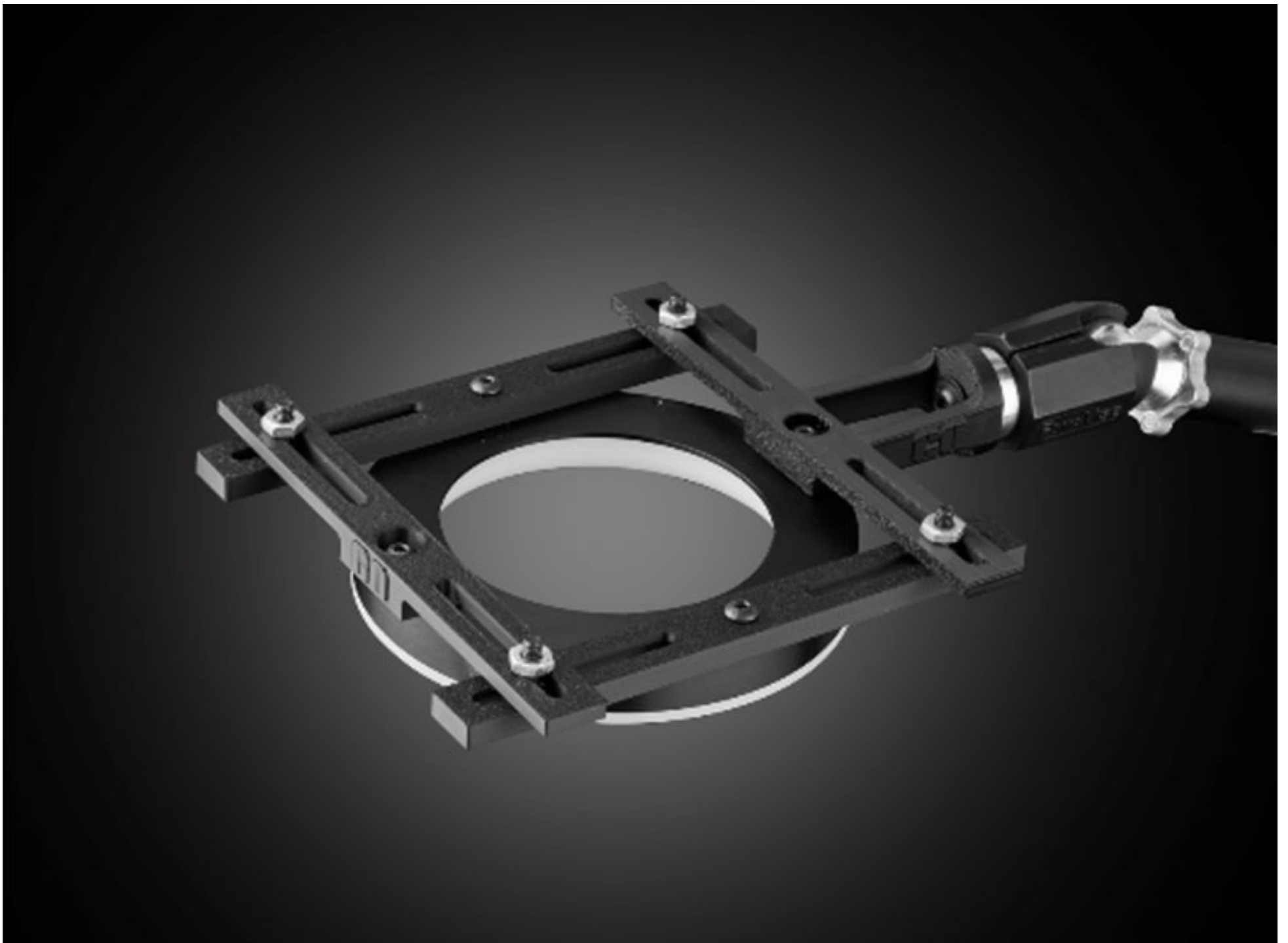
Product Details

For more information on Darkfield Illumination, click [here](#).

- Hybrid Diffuse Brightfield and Darkfield Illumination
- Can Be Used Independently or Simultaneously
- Fixed Intensity or Strobed Options

Advanced Illumination Brightfield/Darkfield LED Ring Lights offer a level of versatility not previously available. Two independently powered rings of LEDs provide darkfield and brightfield illumination. The strobed models' flash duration is dependent on a trigger signal or potentiometer setting. The duration of the strobe can be adjusted from 30 - 300µs via a knob located in the back of the unit. The trigger input signal of the Advanced Illumination Brightfield/Darkfield LED Ring Light is CMOS/TTL compatible. The maximum trigger frequency is 30 Hz.

Note: Required 24V power supply [#66-855](#). [Accessories for Advanced Illumination products](#) are available and sold separately.



Ring Light Configuration

[Download Now](#)

Designed for use with the [Articulating Arm Mounting Systems](#), these 3D-printed mounts allow easy positioning of lights in brightfield or darkfield setups. The design is based on mounting illumination to ¼-20" breadboards or into 80/20 extrusion systems, but can be adapted based on user needs. Mounts are available for ring, bar, line, and inline spot lights.



Application Note

Illumination Mounts for Machine Vision Applications

[Read](#)



Video

Assembly of 3D Printed Mounts for Common Illumination Geometries

[Watch](#)