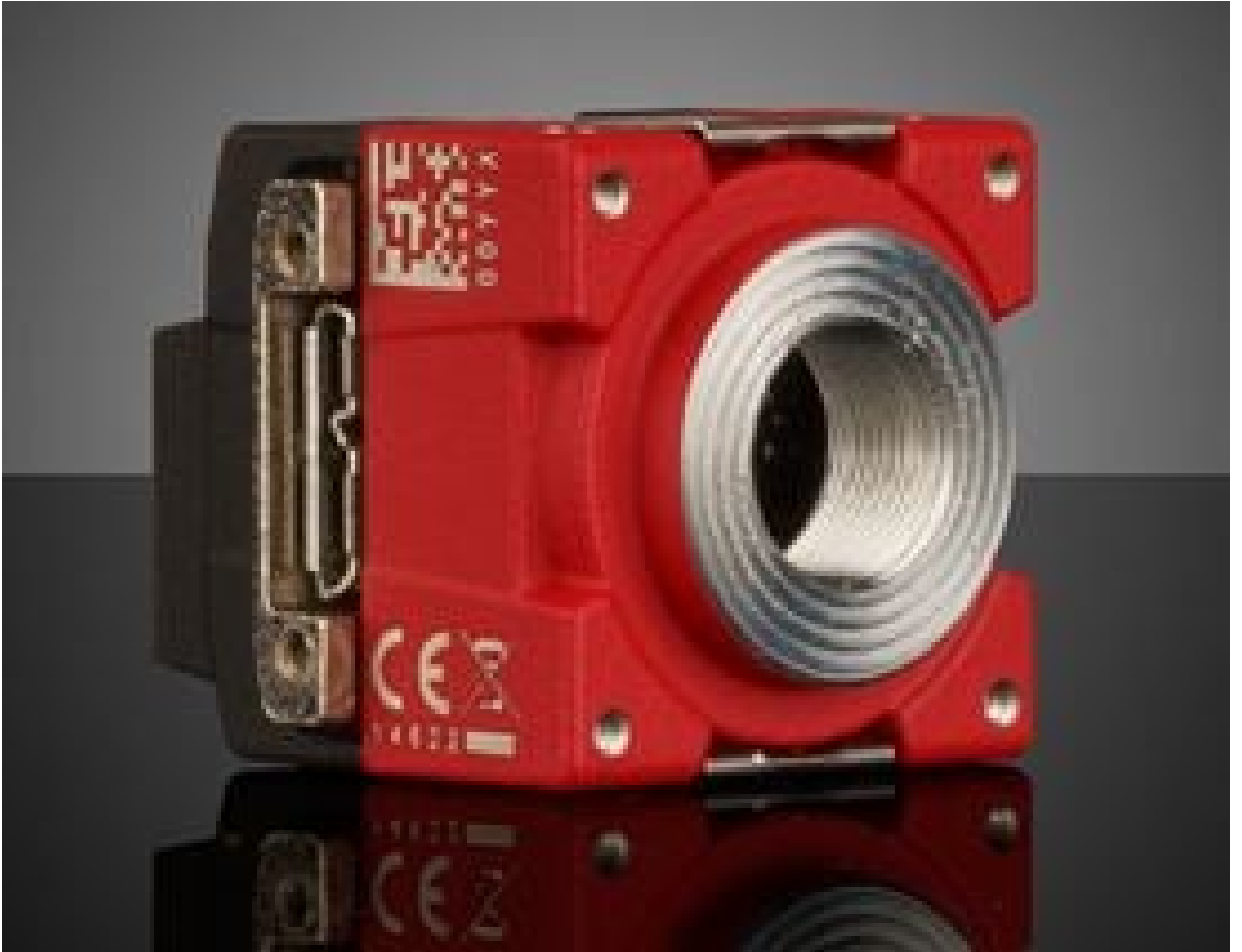


[See all 127 Products in Family](#)

Allied Vision Alvium 1800 U-235c, 1/1.2" 2.4 CS-Mount, Right Angle USB 3.1 Color Camera

See More by [Allied Vision](#)



Stock #26-359 **1 In Stock**

- 1 + C\$1,218⁰⁰

ADD TO CART

Volume Pricing	
Qty 1+	C\$1,218.00 each
Need More?	Request Quote

Product Downloads

Spectrum:
Color

General

Type:
Color Camera

Model Number:
Alvium 1800 U-235c

Manufacturer:
Allied Vision

Alvium Right Angle

Camera Series:

Physical & Mechanical Properties

Dimensions (mm):
29 x 29 x 33 (includes connectors and lens mount)

Weight (g):
65

Housing:
Full

Sensor

Image Buffer:
256KB

Sensor Format:
1/1.2"

Resolution (Megapixels):
2.40

Frame Rate (fps):
155.00

Pixels (H x V):
1,936 x 1,216

Pixel Size, H x V (µm):
5.86 x 5.86

Sensing Area, H x V (mm):
11.3 x 7.1

Imaging Sensor:
Sony IMX174

Type of Sensor:
Progressive Scan CMOS

Shutter Type:
Global

Pixel Depth:
12 bit

Exposure Time:
25 µs - 10s

Dynamic Range (dB):
+5 to +65

Machine Vision Standard:
USB3 Vision v1.0, GenICam

Electrical

Power Consumption (W):
2.8

Hardware & Interface Connectivity

Interface:
USB 3.1 Gen 1

Connector:
USB 3.1 Gen 1, Micro-B

Power Supply:
Power over USB or via GPIO

GPIOs:
4 Programmable TTL GPIOs

Synchronization:
Hardware Trigger (GPIO) or Software Trigger

Interface Port Orientation:
Back Panel

GPIO Connector Type:
USB3 Vision v1.0, GenICam

Threading & Mounting

Mount:
CS-Mount

Mounting Threads:
¼-20 and M6 with Tripod Mount Adapter [#14-156](#)

Environmental & Durability Factors

Operating Temperature (°C):
-20 to +85

Storage Temperature (°C):
7-pin JST

Regulatory Compliance

[Compliant](#)

RoHS 2015:

[View](#)

Certificate of Conformance:

[Compliant](#)

Reach 240:

Product Details

- Right Angle USB Port Orientation
- Compact, Low Cost, High Performance Design for Machine Vision and Embedded Applications
- ALVIUM® System on Chip (SoC) Technology with Onboard Imaging Preprocessing
- [Allied Vision Avium USB 3.1 Cameras](#) Also Available

Allied Vision Avium Right Angle USB 3.1 Cameras feature ALVIUM® System on Chip (SoC) technology and a right-angle USB port in a lightweight compact form factor, offering a comprehensive image processing library for advanced onboard image correction, preprocessing functions to relieve host computer and processor workload, and allow for easy system integration. In addition to smart camera operations, the unique SoC design also allows for low power consumption and ease of integration, making them ideal for next generation machine vision, robotics and embedded vision applications. The cameras feature a variety of popular Sony Pregius and On Semi CMOS sensors with high image quality, fast frame rate and USB3 Vision interface standard. The actively aligned lens mount minimizes inconsistency and variation. Allied Vision Avium Right Angle USB 3.1 Cameras feature a 90° right angle USB port and are available in a variety of monochrome, color, and NIR configurations, including C-Mount, CS-Mount, and S-Mount. Full housing versions are best suited for prototyping, development and end user uses. Partial housing and board level configurations have exposed image sensor PCB without heat sinks to reduce space and facilitate system integration making them ideal for OEM embedded design.

Note: Board level versions do not have a lens mount.

Calibration Services
