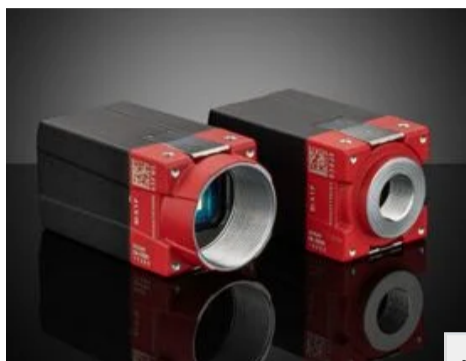


Allied Vision Alvium G5-2040c, 1.1" 20.4MP CS-Mount, 5GigE PoE Color Camera

See More by [Allied Vision](#)



Stock #26-348 [CONTACT US](#)

- 1 +

C\$3,878^{.00}

ADD TO CART



Volume Pricing	
Qty 1+	C\$3,878.00 each
Need More?	Request Quote

Product Downloads	
User Manual:pdf	
Product Literature	
EO Spec Sheet	Download All

Spectrum: Color

General

Type: Color Camera	Model Number: Alvium G5-2040c
Manufacturer: Allied Vision	Camera Series: Alvium G5

Physical & Mechanical Properties

Dimensions (mm): 55 x 29 x 29	Weight (g): 95
Housing: Full	

Sensor

Image Buffer: 512KB	Sensor Format: 1.1"
Resolution (Megapixels): 20.40	Frame Rate (fps): 24.00
Pixels (H x V): 4,512 x 4,512	Pixel Size, H x V (µm): 2.74 x 2.74
Sensing Area, H x V (mm): 12.36 x 12.36	Imaging Sensor: Sony IMX541
Type of Sensor: Progressive Scan CMOS	Shutter Type: Global
Pixel Depth: 12 bit	Exposure Time: 20 µs to 10 s
Dynamic Range (dB): Not Specified	Machine Vision Standard: GigE Vision V2.2, GenICam V2.0

Electrical

Power Consumption (W): External power: 6.9 W at 12 VDC Power over Ethernet: 7.6 W	
--	--

Hardware & Interface Connectivity

Interface:	5GigE (PoE)	Connector:	5GigE, RJ45 with Screw Locks
Power Supply:	PoE, 12 to 24 VDC via GPIO, or with external power supply #23-581	GPIOs:	1 opto-isolated input, 1 opto-isolated output, 2 non-isolated GPIOs
Synchronization:	Hardware Trigger (GPIO) or Software Trigger	Interface Port Orientation:	Back Panel
GPIO Connector Type:	10-pin TFM		

Threading & Mounting

Mount:	CS-Mount	Mounting Threads:	¼"-20 and M6 with Tripod Mount Adapter #14-156
---------------	----------	--------------------------	--

Environmental & Durability Factors

Operating Temperature (°C):	+5 to +60	Storage Temperature (°C):	-20 to +85
------------------------------------	-----------	----------------------------------	------------

Regulatory Compliance

RoHS 2015:	Compliant	Certificate of Conformance:	View
Reach 240:	Compliant		

Product Details

- 4.2 Times More Bandwidth than GigE
- Up to 24.6MP Resolution with Framrates up to 691 FPS
- Onboard Image Processing and Expansive Feature Sets

Allied Vision Alvium G5 5GigE PoE Cameras feature a lightweight, compact form factor and combines the advantages of the established 5GigE Vision standard with the flexibility of the Alvium platform. Powered by ALVIUM® Technology, the sugar cube style camera delivers high image quality at a low power consumption. These cameras feature the latest industrial standard hardware and can easily be integrated into any USB3 Vision or GigE Vision system while ensuring long-term availability and reliability. With precision sensor alignment, enhanced cleanliness, fixed pattern noise correction, and defect pixel correction, resolutions up to 24.6MP and framerates up to 691 FPS are available. Allied Vision Alvium G5 5GigE PoE Cameras feature a gigabit ethernet port on the back panel and are available in a variety of monochrome and color options with either C-Mount or S-Mount lens interfaces all in the compact sugar cube format.

Accessories

Note: Compatible accessories for individual stock numbers may vary. If unsure about which accessories work with your products, please contact us [here](#).

	Title	Compare	Stock Number	Price	Buy
MORE+	Power Over Ethernet (PoE) Single Port injector		#68-469	C\$149.80 Request Quote	3 In Stock <input type="text" value="1"/>
MORE+	Allied Vision Cat6 1G/5GigE Locking Cable, 3m		#23-575	C\$84.00 Request Quote	11 In Stock <input type="text" value="1"/>
MORE+	Allied Vision Cat6 1G/5GigE Locking Cable, 5m		#23-576	C\$126.00 Request Quote	8 In Stock <input type="text" value="1"/>
MORE+	Allied Vision Cat6 1G/5GigE Locking Cable, 10m		#23-577	C\$210.00 Request Quote	5 In Stock <input type="text" value="1"/>

	Title	Compare	Stock Number	Price	Buy
MORE+	Allied Vision Alvium G1/G5 GPIO Cable, 3m		#23-578	C\$147.00 Request Quote	14 In Stock <input type="text" value="1"/>
MORE+	Allied Vision Alvium G1/G5 GPIO Cable, 5m		#23-579	C\$168.00 Request Quote	5 In Stock <input type="text" value="1"/>
MORE+	Allied Vision Alvium G1/G5 GPIO Cable, 10m		#23-580	C\$264.60 Request Quote	3 In Stock <input type="text" value="1"/>
MORE+	Allied Vision Alvium G1/G5 Power Supply		#23-581	C\$382.20 Request Quote	5 In Stock <input type="text" value="1"/>
MORE+	Allied Vision Alvium G1/G5 Heatsink, Set of 2		#23-643	C\$193.20 Request Quote	CONTACT US <input type="text" value="1"/>

Related Products



Allied Vision Alvium USB 3.0 Cameras



Allied Vision Alvium G1 GigE PoE Cameras



Imaging Lenses



Machine Vision Lighting

Imaging Lens Selector

Imaging

- Factory Automation
- Telecentric
- M12

- Custom Sensor
- Camera Model

Camera Model:

Number of Horizontal Pixels:

1

Number of Vertical Pixels:

2

Pixel Size (µm):

3

Working Distance (mm):

4

Horizontal Field of View (mm):



Disclaimer: Values represent theoretical values from lens design software. Actual lens performance varies due to manufacturing tolerances.

Calibration Services

PixelTraq Camera Calibration Services Quote Tool

Edmund Optics has partnered with Quartus Engineering to provide their **PixelTraq camera calibration service** for new orders of TechSpec imaging lenses and machine vision camera pairs. You will receive a fully assembled, focused, and calibrated imaging assembly along with calibration files and certification.

Use the tool below to explore camera calibration service options and pricing.

Please enter your required specifications here:

Camera

Imaging Lens

Calibration Color ⓘ

Camera Model Output ⓘ

Working Distance (m)

Aperture (f/#) ⓘ

Additional Comments

CONTACT US TO DISCUSS

GET QUOTE PREVIEW

Your Selections

Frequently Purchased Together



#03-618 - 5mm Spacer to convert
CS-Mount Cameras to C-Mount
C\$40.60

Qty



Resources

Media Type

- Glossary
- Technical Tool
- Application Note
- Video
- Published Article
- FAQ

GLOSSARY

Image
Capture
Board (Frame
Grabber)

TECHNICAL TOOL

Imaging
System
Parameter
Calculator

TECHNICAL TOOL

Imaging Lens
Selector

APPLICATION NOTE

What is
Imagina?

VIDEO

Edmund
Optics
Imaging Lab
1.1: Field of...

VIDEO

Edmund
Optics
Imaging Lab
1.2: Workina...

[View More](#)