

[See all 9 Products in Family](#)

CCS 1300nm In-Line SWIR Spot Light

See More by [CCS](#)



CCS SWIR In-Line Spot Lights

Stock **#71-197** **2 In Stock**

⊖ 1 ⊕ C\$5,628⁰⁰

ADD TO CART

Volume Pricing	
Qty 1+	C\$5,628.00 each
Need More?	Request Quote

Product Downloads

General

LED Illuminator	Type of Illumination:
CCS	Manufacturer:
Spot Light	Geometry:
Constant	Illumination Mode:

Physical & Mechanical Properties

Dimensions (mm):
22mm Outer Dia., 50mm Length, 8mm Tip Dia.

Weight (g):
32

Active Area (mm):
6.4 Dia.

Optical Properties

Color:
SWR

Wavelength (nm):
1,300

Electrical

Minimum Input Current:
0.7

Hardware & Interface Connectivity

Connector:
SMR-03V-B

Power Supply:
Power Supply & Controller Required and Sold Separately:
USA: [#73-491](#) & [#21-880](#)
Europe: [#73-491](#) & [#21-880](#)
Japan: [#89-513](#) & [#21-880](#)
Korea: [#33-773](#) & [#21-880](#)
China: [#73-491](#) & [#21-880](#)

Environmental & Durability Factors

Operating Temperature (°C):
0 to 40

Regulatory Compliance

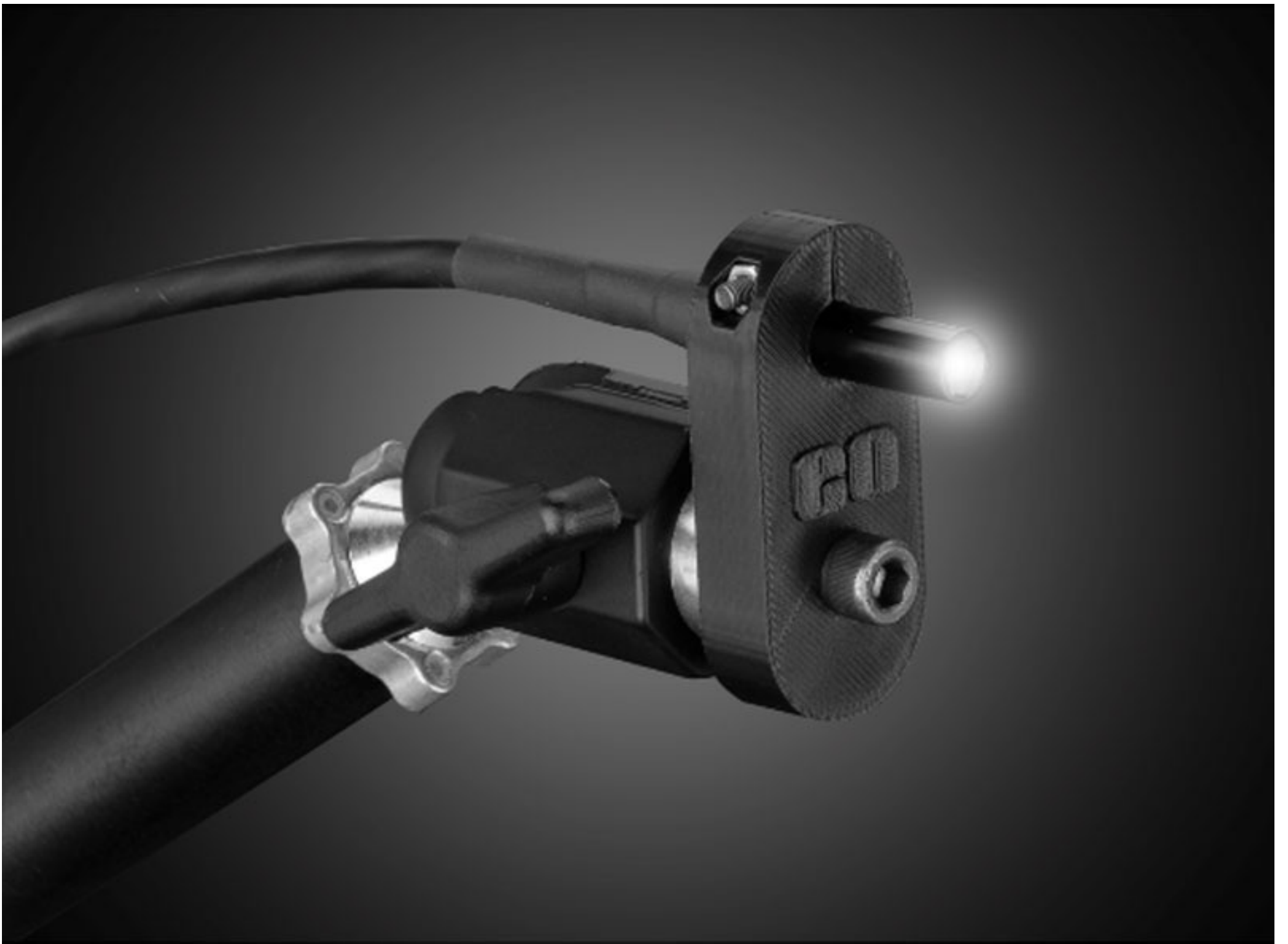
Certificate of Conformance:
[View](#)

Product Details

- Available in Common SWIR Wavelengths of 1050 to 1650nm
- High Intensity and Uniformity
- Ideal for Use with Telecentric Lenses

CCS SWIR In-Line Spot Lights provide high intensity output and uniform spot lighting in a lightweight, compact housing and are available in wavelength options of 1050, 1200, 1300, 1450, 1550, or 1650nm. Featuring a 6.4mm output illumination tip, these spot lights can be easily connected to the [in-line illumination](#) port of common telecentric lenses. CCS SWIR In-Line Spot Lights create a consistent and uniform light distribution allowing for even illumination across the target. These spot lights are ideal for applications including wafer transmission inspection, package inspection, as well as moisture content and water droplet inspection. The cylindrical design of these spot lights makes them an excellent lighting option for [TECHSPEC SilverTL™ SWIR Telecentric Lenses](#).

[3D-Printable Mount Files](#)



Spot Light Configuration

**DOWNLOAD
NOW**

Designed for use with the [Articulating Arm Mounting Systems](#), these 3D-printed mounts allow easy positioning of lights in brightfield or darkfield setups. The design is based on mounting illumination to 1/4-20" breadboards or into 80/20 extrusion systems, but can be adapted based on user needs. Mounts are available for ring, bar, line, and inline spot lights.



Application Note

Illumination Mounts for Machine Vision Applications
[Read](#) 



Video

Assembly of 3D Printed Mounts for Common Illumination Geometries
[Watch](#) 