

[« See all 14 Products in Family](#)
[All Products](#) / [Lasers](#) / [Laser Sources](#) / [Life Science Lasers](#)  
[/ Coherent® Single Frequency OBIS™ LX Laser Systems](#)

# Coherent® OBIS™ LX SF 2278601 | 633nm LX SF 30mW, Fiber-Pigtailed, Single Frequency Laser

 See More by [Coherent®](#)


Coherent® OBIS™ Fiber-Pigtailed, Single Frequency Laser

 Stock #26-480 **1 In Stock**

- 1 +

**C\$8,988<sup>00</sup>**
[ADD TO CART](#)


Volume Pricing	
Qty 1+	C\$8,988.00 each
Need More?	<a href="#">Request Quote</a>

Product Downloads	
<input checked="" type="checkbox"/> Start Up Guide:pdf	IGES:igs
Drivers	Spec Sheets:pdf
Software	eDrawing:eprt
EO Spec Sheet	

## General

<b>Warm-Up Time (minutes):</b>	<5	<b>Fiber Cable Type:</b>	3mm Mono-Coil, FC/APC 8° angled
<b>Type of Laser:</b>	Diode	<b>Laser Class - CDRH:</b>	IIIb
<b>Model Number:</b>	2278601		

## Physical & Mechanical Properties

<b>Pointing Stability after Warm Up (mrad/°C):</b>	<5	<b>Core Diameter (µm):</b>	4.5
<b>Pointing Stability (µrad):</b>	<30		

## Optical Properties

<b>Polarization:</b>	100:1 (minimum)	<b>Spatial Mode:</b>	TEM <sub>00</sub>
<b>Wavelength (nm):</b>	633.00	<b>Mode Quality, M<sup>2</sup>:</b>	≤1.1
<b>Spectral Line Width (MHz):</b>	150	<b>Color:</b>	Red
<b>Spectral Line Width (pm):</b>	0.3	<b>Fiber Numerical Aperture NA (1/e<sup>2</sup>):</b>	0.09

## Electrical

<b>Output Power (mW):</b>	30	<b>Power Stability (%):</b>	<1
<b>RMS Noise:</b>	≤0.05	<b>Peak-to-Peak Noise:</b>	<0.5%

## Hardware & Interface Connectivity

**Power Supply:** Power Supply Required and Sold Separately:  
 USA: **#87-473**  
 Europe: **#87-473**  
 Japan: **#87-473**  
 Korea: **#87-473**  
 China: **#87-473**

**Output Type:** Fiber Pigtailed

## Environmental & Durability Factors

**Operating Temperature (°C):** +10 to +50

## Regulatory Compliance

**Certificate of Conformance:** [View](#)

## Product Details

- Single Frequency, Collimated, TEM<sub>00</sub> Output Beam
- Excellent Signal-to-Noise Ratio
- Compatible With All OBIS LX/LS Power Supplies, Software, and Accessories

Coherent® Single Frequency OBIS™ LX Laser Systems incorporate Coherent's SureLock™ volume holographic grating (VHG) stabilized laser diodes to deliver consistent, single frequency performance in the same form factor as all other **OBIS LX/LS platforms**. Available in 405, 633, and 660nm, these laser systems excel in application spaces requiring very low RMS signal-to-noise of less than 0.05%. An excellent alternative to stabilized HeNe lasers, each laser is stabilized using Coherent's PowerLocker® volume holographic grating ensuring precise and stable center wavelengths, low temperature dependence, and consistent optical performance. Coherent® Single Frequency OBIS™ LX Laser Systems are ideal for applications such as confocal microscopy, DNA sequencing, flow cytometry, and interferometry and are compatible with all other OBIS LX/LS power supplies, accessories, and software.

### OBIS Laser System Startup Guide

This downloadable PDF provides guidance on interfacing with OBIS controllers and power supplies, mounting and connecting the heatsink, and starting modulation.

[Download Startup Guide](#)

## Accessories

**Note:** Compatible accessories for individual stock numbers may vary. If unsure about which accessories work with your products, please contact us [here](#).

	Title	Compare	Stock Number	Price	Buy
<a href="#">MORE+</a>	3m OBIS Laser-to-Remote Cable		<b>#11-504</b>	<b>C\$336.00</b> <a href="#">Request Quote</a>	<a href="#">CONTACT US</a> <input type="text" value="1"/>
<a href="#">MORE+</a>	Coherent® OBIS™ LX/LS Laser Box with Power Supply 1228877		<b>#33-351</b>	<b>C\$4,487.00</b> <a href="#">Request Quote</a>	<b>2 In Stock</b> <input type="text" value="1"/>
<a href="#">MORE+</a>	Coherent® OBIS™ 1214874   DC Power Supply and Power Cord (Non-CDRH)		<b>#87-472</b>	<b>C\$126.00</b> <a href="#">Request Quote</a>	<b>5 In Stock</b> <input type="text" value="1"/>
<a href="#">MORE+</a>	Heat Sink for OBIS™ Laser		<b>#34-249</b>	<b>C\$333.20</b> <a href="#">Request Quote</a>	<b>20+ In Stock</b> <input type="text" value="1"/>
<a href="#">MORE+</a>	Coherent® OBIS™ 1214875   Remote w/ DC Power Supply & Power Cord (CDRH)		<b>#87-473</b>	<b>C\$889.00</b> <a href="#">Request Quote</a>	<a href="#">CONTACT US</a> <input type="text" value="1"/>
<a href="#">MORE+</a>	Coherent® OBIS™ 1234466   6 Laser Scientific Remote w/ Power Supply (CDRH)		<b>#87-475</b>	<b>C\$3,437.00</b> <a href="#">Request Quote</a>	<b>1 In Stock</b> <input type="text" value="1"/>
<a href="#">MORE+</a>	Coherent® OBIS™ 1193289   Heat Sink w/ Integrated Cooling Fan		<b>#87-474</b>	<b>C\$595.00</b> <a href="#">Request Quote</a>	<b>2 In Stock</b> <input type="text" value="1"/>

## Related Products



Coherent® High Performance OBIS™ LX/LS Laser Systems



Fluorescence Bandpass Filters

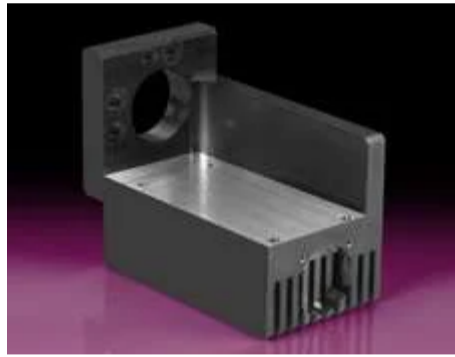


Laser Safety Glasses and Goggles



632.8nm Frequency Stabilized Laser Diodes

## Frequently Purchased Together



#34-249 - Heat Sink for OBIS™ Laser  
C\$333.20

Qty



#87-473 - Coherent® OBIS™ 1214875 | Remote w/ DC Power Supply & Power Cord (CDRH)  
C\$889.00

Qty

## Resources

### Media Type

- Technical Tool
- Application Note
- Video
- FAQ
- Glossary
- Published Article
- Scientific Paper

TECHNICAL TOOL

Gaussian Beams Calculator

APPLICATION NOTE

Gaussian Beam Propagation

APPLICATION NOTE

Common Laser Types

VIDEO

Understanding Lasers and How They're Used Every...

? FAQ

Can a laser beam be seen from the side?

? FAQ

What factors are involved in how well I can see a laser...

[View More](#)

;