

## Corning® Varioptic® AF Explorer Development Kit with Sony IMX335 Sensor



Stock #22-097 **1 In Stock**

1 **C\$1,764<sup>00</sup>**

**ADD TO CART**

### Volume Pricing

Qty 1+	<b>C\$1,764.00</b> each
Need More?	<a href="#">Request Quote</a>

### Product Downloads

### General

Color Camera

Type:

#### Contents of Kit:

- 1 x AF Explorer Camera Board
- 1 x Sony IMX335 Sensor
- 1 x TOF Sensor
- 1 x USB Type-C Cable
- 1 x Mounting Pedestals
- White LEDs
- AF Lab Camera Software

### Physical & Mechanical Properties

## Physical & Mechanical Properties

**Dimensions (mm):**  
110 x 70 x 5 (excludes sensor and lens mount)

**Weight (g):**  
504

## Sensor

**Sensor Format:**  
1/2.8"

## Electrical

**Power Consumption (W):**  
1.65W - 2.60W (LED Off/On, 5MP 30fps)

## Hardware & Interface Connectivity

**Connector:**  
USB 3.1 Gen 1, Type-C

## Threading & Mounting

**Mount:**  
C-Mount or S-Mount

**Mounting Threads:**  
1/4-20 Tripod Adapter, Built-in Pedestals

## Environmental & Durability Factors

**Operating Temperature (°C):**  
0°C to +65°C

**Storage Temperature (°C):**  
-20°C to +85°C

## Regulatory Compliance

**Certificate of Conformance:**  
[View](#)

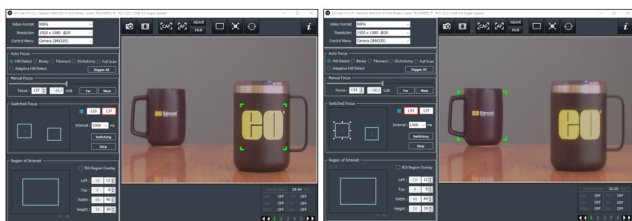
## Product Details

- Ideal for Evaluating and Exploring Liquid Lens Technology
- Easily Driven via AF Lab Software over USB
- Plug-and-Play With TECHSPEC® Liquid Lens [Cx Series](#) and [M12 Lenses](#)

The Corning® Varioptic® AF Explorer Autofocus Board Level Camera for Liquid Lenses provides an easy-to-use evaluation platform for exploring liquid lens technology and its benefits to machine vision applications. Featuring plug-and-play compatibility with our TECHSPEC® Liquid Lens [Cx Series](#) and [M12 Lenses](#), the AF Explorer is easily driven via the included AF Explorer software for adjusting basic sensor settings, autofocus modes, autofocus algorithms, and more. The Corning® Varioptic® AF Explorer Autofocus Board Level Camera for Liquid Lenses is ideal for those looking to incorporate liquid lens technology into their machine vision or life science application for the first time, or as a standalone camera in production applications. Included with each AF Explorer is the main electronics board, an imaging sensor, time of flight (TOF) sensor, software, and product documentation.

**Note:** Additional sensor boards are available for use with the AF Explorer, including the Samsung M3085 (8MP 1/3.2"), Sony IMX307 (2MP 1/2.8"), and Sony IMX219 (8MP 1/4"), all optimized for use with our TECHSPEC® Liquid Lens Imaging Lenses. Please contact us for more information.

## Technical Information



The AF Lab software allows for users to acquire images, record video, and easily use auto-focus features such as switched focus between different regions of interest.