

[See all 24 Products in Family](#)

Diffused Light Compact Spot Light HLV3-14SW-HU

See More by [CCS](#)



Stock #21-853 **3 In Stock**

- 1 + C\$627²⁰

ADD TO CART

Volume Pricing	
Qty 1+	C\$627.20 each
Need More?	Request Quote

Product Downloads

General

HLV3-14SW-HU	Model Number:
LED Illuminator	Type of Illumination:
CCS	Manufacturer:
Spot Light	Geometry:
Constant	Illumination Mode:

Physical & Mechanical Properties

Dimensions (mm):
14 x 28 x 20 (WxD xH), Tip diameter 8 mm

Weight (g):
18

Active Area (mm):
7

Optical Properties

Color:
White

Electrical

Power Consumption (W):
0.9

Maximum Input Current:
275mA

Hardware & Interface Connectivity

Power Supply:
Power Supply & Controller Required and Sold Separately:
USA: [#73-491](#) & [#21-880](#)
Europe: [#73-491](#) & [#21-880](#)
Japan: [#89-513](#) & [#21-880](#)
Korea: [#33-773](#) & [#21-880](#)
China: [#73-491](#) & [#21-880](#)

Environmental & Durability Factors

Color Temperature (K):
4900

Regulatory Compliance

RoHS 2015:
[Exempt](#)

Reach 224:
[Contains SVHC\(s\)](#)

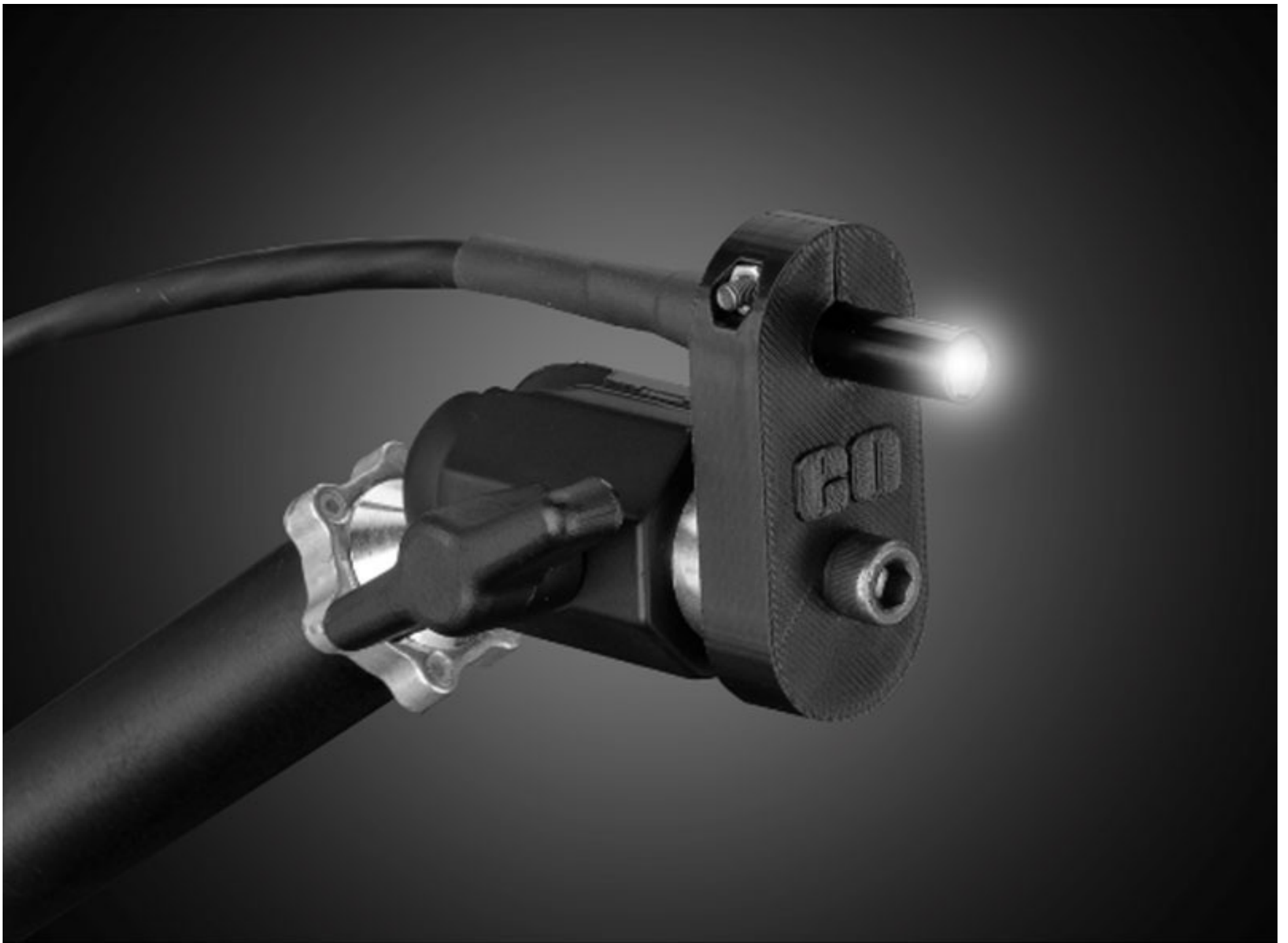
Certificate of Conformance:
[View](#)

Product Details

- Ideal for Alignment and Measurement Applications
- L-Type and Cylindrical Housing Options
- Available with 8mm or 12mm Tip

CCS LED Spot Light Illuminators provide high intensity output and uniform spot lighting in a lightweight and compact housing. Available in two configurations, the L-Type orients the LED at a right angle to save horizontal space in compact applications while the cylindrical type provides a higher output intensity in a longer overall housing. Both housing options are available with red, white, blue, green, and IR outputs. CCS LED Spot Light Illuminators are ideal for alignment of LCD's or circuit boards (PCB's), dimension measurement applications, or as a light source for spot illumination. 8mm diameter tip configurations integrate directly with [TECHSPEC® CompactTL™ Telecentric Lenses](#).

[3D-Printable Mount Files](#)



Spot Light Configuration

[Download Now](#)

Designed for use with the [Articulating Arm Mounting Systems](#), these 3D-printed mounts allow easy positioning of lights in brightfield or darkfield setups. The design is based on mounting illumination to 1/4-20" breadboards or into 80/20 extrusion systems, but can be adapted based on user needs. Mounts are available for ring, bar, line, and inline spot lights.



[Application Note](#)

Illumination Mounts for Machine Vision Applications

[Read](#)



[Video](#)

Assembly of 3D Printed Mounts for Common Illumination Geometries

[Watch](#)