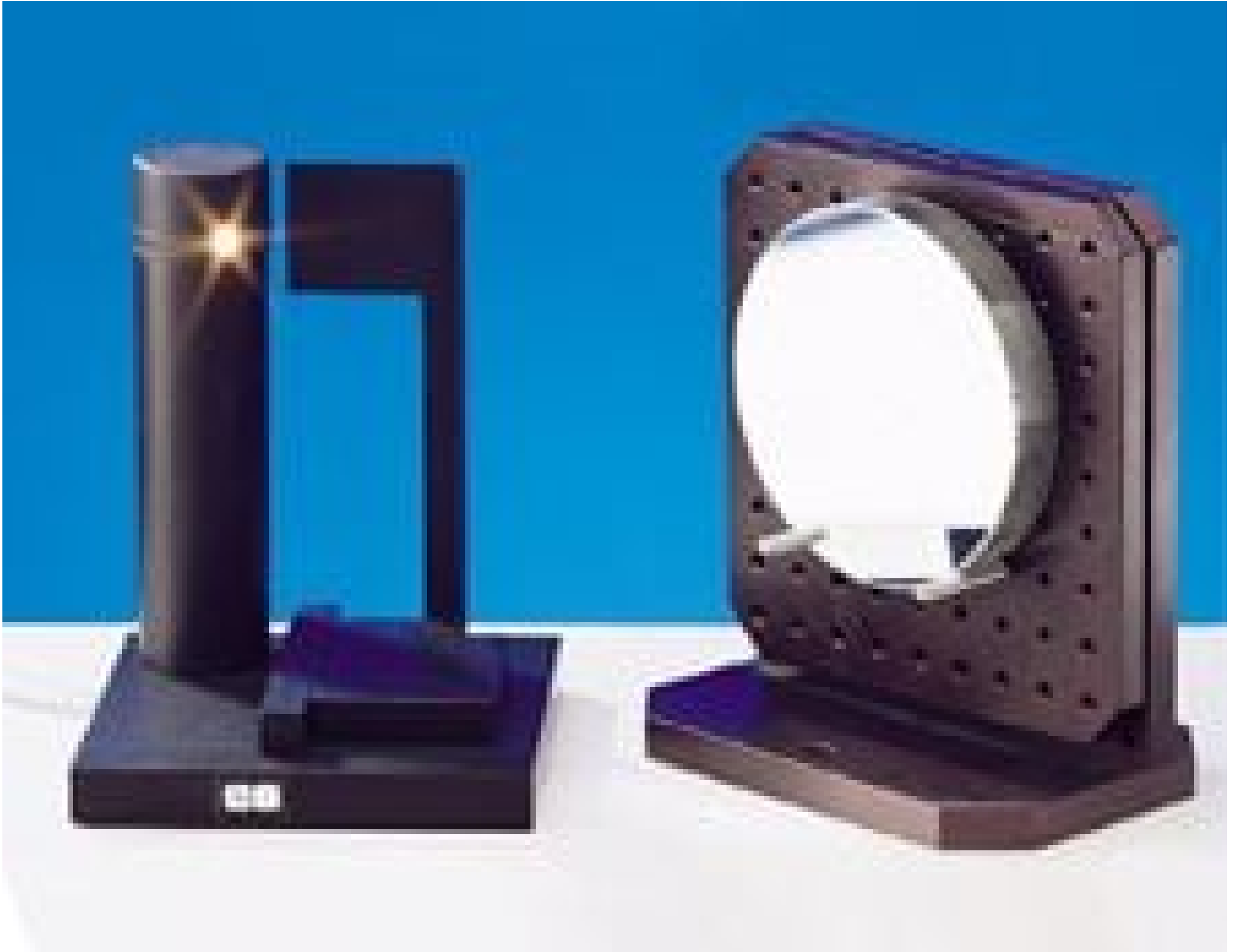


[See all 1 Products in Family](#)

Foucault Tester



Stock #70-977 **20+ In Stock**

1 **C\$315⁰⁰**

ADD TO CART

Volume Pricing

Qty 1+ **C\$315.00** each

Need More? [Request Quote](#)

Product Downloads

Physical & Mechanical Properties

Dimensions (inches):

Knife Edge: 3 L x 2 W x 5.75 H
Light Source: 5 L x 5 W x 6.5 H

Regulatory Compliance

RoHS 2015:

[Compliant](#)

Certificate of Conformance:

[View](#)

Product Details

- Test for Wavefront Accuracy
- Comes Completely Assembled
- All Metal Construction

Tests for wave front accuracy of spherical, aspherical and parabolic mirrors. The Foucault knife-edge tester actually measures the radius of curvature of zones on the mirror. The blade cuts off the returning light from the mirror and the sections extinguished (uniform gray) will have the same radius. All metal construction. Includes light source (7W bulb) with five foot cord and three-prong plug, knife edge unit, and instructions. Completely assembled. (Mirror and Mirror Mount pictured are not included.)

;