

[See all 7 Products in Family](#)

Iris PCIe Interface Card



Stock #90-397 **NEW** 2 In Stock

⊖ 1 ⊕ C\$1,162⁵⁰

ADD TO CART

Volume Pricing

Qty 1+	C\$1,162.50 each
Need More?	Request Quote

Product Downloads

General

Camera Accessory **Type:**

Regulatory Compliance

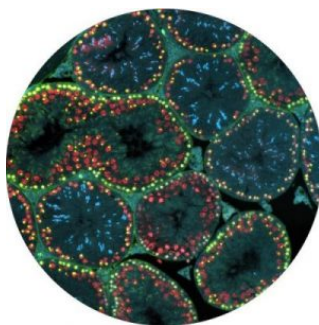
[View](#) Certificate of Conformance:

Product Details

- High Resolution Imaging Even at Low Magnifications
- Small 4.25µm Pixels Across Large Arrays
- Advanced Triggering
- Scientific Cameras for High Sensitivity Microscopy Applications



Teledyne Photometrics Iris PCIe Cameras utilize high-resolution sCMOS sensors with 4.25 µm pixels and large sensor formats. This enables precise imaging at low magnifications by maximizing spatial sampling across wide fields of view without sacrificing sensitivity or frame rate. These cameras also feature programmable scan and readout modes that allow precise control of exposure timing and sensor readout direction. Additionally, their advanced triggering capabilities enable seamless synchronization with external devices for high-speed or time-critical imaging applications. Teledyne Photometrics Iris PCIe Cameras are available in C-Mount and F-Mount configurations and are ideal for light-sheet microscopy, live-cell fluorescence, or imaging large samples at high resolutions. These cameras include Teledyne's proprietary-designed software platforms, Beacon and PVCAM, for optimizing camera performance and ease of system integration.



High Resolution

The small, 4.25 µm pixels provide highly detailed images across the imaging plane, which allows for the highest resolution when using lower magnification objectives.

Large Field of View

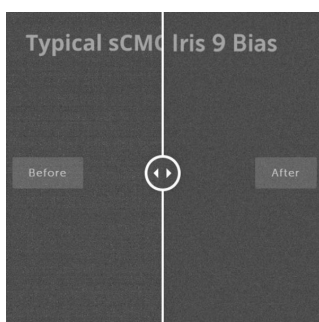
The larger format 25 mm sensor of the Iris 15 is designed to increase throughput, maximize the amount of data captured and take full advantage of new, larger field of view microscopes.

Compact Form Factor

The Iris 9 (76 x 76 x 88 mm) and Iris 15 (78 x 78 x 108 mm) cameras feature optimized cooling for the size, ideal for integration into new or existing configurations.

Advanced Triggering

Programmable Scan Mode provides increased control over the rolling shutter exposure and read-out functionality of CMOS sensors by providing access to the sensor timing settings to allow optimization around applications that require control over the line time.



Superior Background Quality

The Iris Family feature Pattern Noise Reduction Technology and Correlated Noise Reduction Technology to ensure that they deliver clean, pattern-free images with minimal pixel defects, delivering improved image quality in low light conditions.
