

# Linescan Diffuser Accessory for 15 LED Bar Light



Stock #34-887 **12 In Stock**

1

C\$264<sup>.60</sup>

**ADD TO CART**

#34-887: Linescan Diffuser Accessory for 15 LED Bar Light



Volume Pricing	
Qty 1+	C\$264.60 each
Need More?	<a href="#">Request Quote</a>

Product Downloads

- [Spec Sheets:pdf](#)
- [Download All](#)

## General

<b>Type of Illumination:</b>	Accessory	<b>Note:</b>	Used to diffuse the LED bar lights to have linear lighting. Diffusion angle is 50° (H) x 3° (V).
<b>Manufacturer:</b>	Effilux		

## Regulatory Compliance

<b>Certificate of Conformance:</b>	<a href="#">View</a>
------------------------------------	----------------------

## Product Details

- Direct Access to Optics for Quick, Manual Adjustment of Illumination Cone Angles
- Included Interchangeable Windows Allows for Easy Adjustment of Light Diffusion
- Easy to Integrate Linescan Accessory for Linear or Darkfield Lighting

Effilux Adjustable LED Bar Lights provide versatility by allowing the emission angle of the light to be modified by the user. Various illumination emission angles can be modified by simply removing the LED window that's held in place by screws to access the lens array and adjust the lens array height to one of the three indicated positions. Effilux Adjustable LED Bar Lights include three interchangeable windows: transparent, semi-diffuse, and opaline. By placing the optional polarizer or linescan accessories beneath the transparent window, glare can be eliminated or linear lighting created. The flexibility and ease of user modifications for these bar lights make them ideal for use in many application types.

**Note:** 24V power supply and M12 female to male cable are required. When first powered, these lights start in their Overdriven state with 700% intensity then relax to normal intensity.

### 3D-Printable Mount Files



Bar or Line Light Configuration

Designed for use with the [Articulating Arm Mounting Systems](#), these 3D-printed mounts allow easy positioning of lights in brightfield or darkfield setups. The design is based on mounting illumination to ¼-20" breadboards or into 80/20 extrusion systems, but can be adapted based on user needs. Mounts are available for ring, bar, line, and inline spot lights.

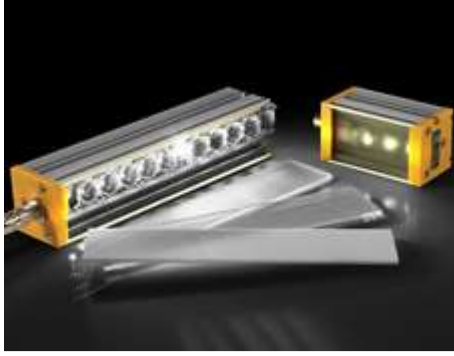
<p><b>Application Note</b></p> <p>Illumination Mounts for Machine Vision Applications</p> <p><a href="#">Read &gt;&gt;</a></p>	<p><b>Video</b></p> <p>Assembly of 3D Printed Mounts for Common Illumination Geometries</p> <p><a href="#">Watch &gt;&gt;</a></p>
--	---

## Accessories

**Note:** Compatible accessories for individual stock numbers may vary. If unsure about which accessories work with your products, please contact us [here](#).

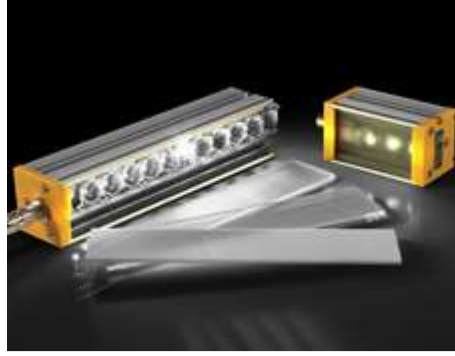
	Title	Compare	Stock Number	Price	Buy
<a href="#">MORE+</a>	Power Supply for Effilux Lights, UK Type Adapter		#73-683	C\$400.40 <a href="#">Request Quote</a>	<a href="#">CONTACT US</a> <input type="text" value="1"/>
<a href="#">MORE+</a>	Power Supply for Effilux Lights, CN Type Adapter		#73-684	C\$400.40 <a href="#">Request Quote</a>	<a href="#">CONTACT US</a> <input type="text" value="1"/>
<a href="#">MORE+</a>	Intensity Adjustment Dimmer for Effilux LED Lights		#75-337	C\$336.00 <a href="#">Request Quote</a>	<a href="#">CONTACT US</a> <input type="text" value="1"/>
<a href="#">MORE+</a>	Intensity Adjustment Potentiometer for Effilux RGB LED Lights		#15-876	C\$588.00 <a href="#">Request Quote</a>	<a href="#">CONTACT US</a> <input type="text" value="1"/>
<a href="#">MORE+</a>	Power Supply for Effilux LED Lights, EU Adapter		#15-875	C\$406.00 <a href="#">Request Quote</a>	<a href="#">CONTACT US</a> <input type="text" value="1"/>
<a href="#">MORE+</a>	Power Supply for Effilux Lights, US Type Adapter		#15-874	C\$406.00 <a href="#">Request Quote</a>	<a href="#">CONTACT US</a> <input type="text" value="1"/>
<a href="#">MORE+</a>	Polarizer Accessory for 1 LED Bar Light		#34-881	C\$28.70 <a href="#">Request Quote</a>	1 In Stock <input type="text" value="1"/>
<a href="#">MORE+</a>	Polarizer Accessory for 5 LED Bar Light		#34-882	C\$78.40 <a href="#">Request Quote</a>	<a href="#">CONTACT US</a> <input type="text" value="1"/>
<a href="#">MORE+</a>	Linescan Accessory for 5 LED Bar Light		#34-883	C\$193.20 <a href="#">Request Quote</a>	1 In Stock <input type="text" value="1"/>
<a href="#">MORE+</a>	Polarizer Accessory for 10 LED Bar Light		#34-884	C\$100.10 <a href="#">Request Quote</a>	1 In Stock <input type="text" value="1"/>
<a href="#">MORE+</a>	Linescan Accessory for 10 LED Bar Light		#34-885	C\$235.20 <a href="#">Request Quote</a>	<a href="#">CONTACT US</a> <input type="text" value="1"/>
<a href="#">MORE+</a>	Polarizer Accessory for 15 LED Bar Light		#34-886	C\$121.10 <a href="#">Request Quote</a>	1 In Stock <input type="text" value="1"/>
<a href="#">MORE+</a>	Linescan Diffuser Accessory for 15 LED Bar Light		#34-887	C\$264.60 <a href="#">Request Quote</a>	12 In Stock <input type="text" value="1"/>
<a href="#">MORE+</a>	M6 T-Nut (includes M6 x 14 screw)		#34-888	C\$14.35 <a href="#">Request Quote</a>	<a href="#">CONTACT US</a> <input type="text" value="1"/>
<a href="#">MORE+</a>	M12 Female to Male, 5 pin, 2m		#34-869	C\$78.40 <a href="#">Request Quote</a>	<a href="#">CONTACT US</a> <input type="text" value="1"/>
<a href="#">MORE+</a>	M12 Female to Bare Leads, 5 pin, 2m		#34-870	C\$57.05 <a href="#">Request Quote</a>	<a href="#">CONTACT US</a> <input type="text" value="1"/>
<a href="#">MORE+</a>	Swivel Mounting Accessory		#34-889	C\$109.90 <a href="#">Request Quote</a>	<a href="#">CONTACT US</a> <input type="text" value="1"/>

## Frequently Purchased Together



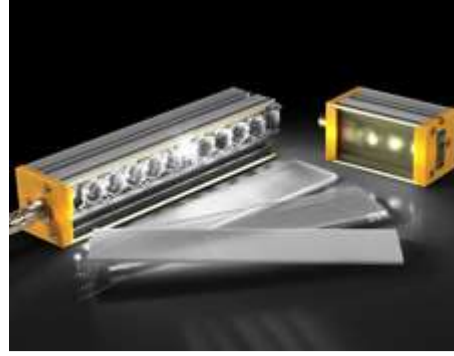
#34-877 - 10 LED, White Adjustable LED Bar Light  
C\$1,197.00

Qty



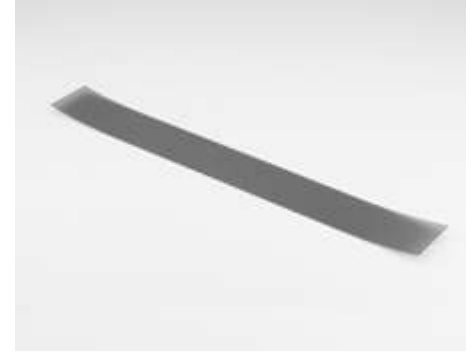
#34-878 - 10 LED, Red Adjustable LED Bar Light  
C\$1,141.00

Qty



#34-880 - 15 LED, Red Adjustable LED Bar Light  
C\$1,554.00

Qty



#34-886 - Polarizer Accessory for 15 LED Bar Light  
C\$121.10

Qty

# Resources

## Media Type

- Technical Tool
- Application Note
- FAQ
- Glossary
- Video
- Published Article

TECHNICAL TOOL

Illumination Spot Size Calculator

APPLICATION NOTE

Common Illumination Types

APPLICATION NOTE

Using Structured Illumination

FAQ

What is ripple in illuminators and how does it affect mv...

FAQ

What is the advantage of high frequency illumination?

FAQ

What are the advantages of LED illumination?

[View More](#)