

Lucid Vision Labs Atlas10 ATX314S-CT, Sony IMX342, 31.4MP, Color Camera

See More by [LUCID Vision Labs™](#)



Stock #74-727 **NEW** 1 In Stock [Similar Cameras](#)

- 1 +

C\$9,016^{.00}

ADD TO CART

LUCID Vision Labs Atlas10 10GigE Power over Ethernet (PoE) Cameras (Front, C-Mount)



| Volume Pricing | |
|----------------|-------------------------------|
| Qty 1+ | C\$9,016.00 each |
| Need More? | Request Quote |

Product Downloads

- Start Up Guide
- User Manual
- Software

Spectrum: Color

General

| | |
|--|---------------------------------|
| Type: Color Camera | Model Number: ATX314S-CT |
| Manufacturer: Lucid Vision Labs | Camera Series: Atlas10 |

Physical & Mechanical Properties

| | |
|---|------------------------|
| Dimensions (mm): 55 x 55 x 95.5 (excludes connectors and lens mount) | Weight (g): 325 |
| Housing: Full | |

Sensor

| | |
|--|--|
| Image Buffer: 380MB | Sensor Format: APS-C |
| Resolution (Megapixels): 31.40 | Frame Rate (fps): 35.10 |
| Pixels (H x V): 6,464 x 4,852 | Pixel Size, H x V (µm): 3.45 x 3.45 |
| Sensing Area, H x V (mm): 22.30 x 16.74 | Imaging Sensor: Sony IMX342 |
| Type of Sensor: Progressive Scan CMOS | Shutter Type: Global |
| Pixel Depth: 8/10/12 Bit | Exposure Time: 37.896µs - 10 s (Normal); 2.328µs - 2.464µs (Short Mode) |
| Dynamic Range (dB): 70.8 | Machine Vision Standard: GigE Vision v2.0 |

Electrical

Power Consumption (W): 11.5 (External Power Supply) <12 (PoE+)

Hardware & Interface Connectivity

Connector: 10GigE, M12

Power Supply: Power Supply Required and Sold Separately:
USA: [#18-364](#)
Europe: [#18-364](#)
Japan: [#18-364](#)
Korea: Not Available
China: [#18-364](#)

GPIOs: 1 opto-isolated input, 1 opto-isolated output, 2 non-isolated bi-directional ports

Synchronization: Hardware Trigger (GPIO), Software Trigger, or PTP (IEEE 1588)

Interface Port Orientation: Back Panel

GPIO Connector Type: 8-pin M8

Threading & Mounting

Mount: TFL-Mount

Mounting Threads: 2 x ¼-20 with Tripod Mount Adapter [#17-120](#)

Environmental & Durability Factors

Operating Temperature (°C): -20 to +45

Storage Temperature (°C): -30 to +60

Regulatory Compliance

Certificate of Conformance: [View](#)

Product Details

Sony IMX342

- 10GBASE-T (10GigE) Ethernet Interface with PoE+
- 5.0 to 65 Megapixel Sony 4th Gen Pregius S Sensors
- Compact 55 x 55mm Form Factor
- TFL-Mount Compatible with some [TECHSPEC® CA Series FFL Lenses](#)

LUCID Vision Labs Atlas10 10GigE Power over Ethernet (PoE) Cameras combine 4th generation Sony Pregius S sensors with 10GigE interface, delivering fast frame rates at high resolution and image quality in a compact and rugged housing. The 10GBASE-T Power over Ethernet PoE+ interface allows for data transfer speeds of up to 1.2 GB/s and can also provide power to the camera over one CAT6a cable up to 25m in length. The high bandwidth enables these cameras to run at high bit depths (10/12-bit) to maximize image quality while maintaining smooth frame rates. The back-illuminated CMOS sensors offer high sensitivity, high dynamic range, and low noise, and are actively aligned to the lens mount at the same optical axis to minimize performance discrepancies resulting from sensor tilt and rotation. LUCID Vision Labs Atlas10 10GigE Power over Ethernet (PoE) Cameras are GigE Vision compliant and feature rugged M12 Ethernet and M8 GPIO connectors, making them ideal choices for industrial, automotive, factory automation, process control, and other machine vision applications requiring high resolutions and bandwidth.

Accessories

Note: Compatible accessories for individual stock numbers may vary. If unsure about which accessories work with your products, please contact us [here](#).

| | Title | Compare | Stock Number | Price | Buy |
|-----------------------|--|---------|-------------------------|---|--|
| MORE+ | Power Over Ethernet (PoE) Single Port injector | | #68-469 | C\$149.80 Request Quote | 3 In Stock <input type="text" value="1"/> |

| | Title | Compare | Stock Number | Price | Buy |
|-----------------------|--|---------|--------------|--|---|
| MORE+ | Broadcom Dual Port 10G Ethernet Card | | #72-561 | C\$1,421.00 Request Quote | 1 In Stock <input type="text" value="1"/> |
| MORE+ | Dual Port 10G POE+ Ethernet Card | | #72-562 | C\$1,652.00 Request Quote | 2 In Stock <input type="text" value="1"/> |
| MORE+ | Quad Port 5 Gigabit POE+ Ethernet Card | | #72-563 | C\$1,960.00 Request Quote | 4 In Stock <input type="text" value="1"/> |
| MORE+ | M8 GPIO Power Supply for Triton/Atlas, EU Plug | | #18-365 | C\$362.60 Request Quote | 6 In Stock <input type="text" value="1"/> |
| MORE+ | M8 GPIO Power Supply for Triton/Atlas/Helios™2, US Plug | | #18-364 | C\$388.50 Request Quote | 2 In Stock <input type="text" value="1"/> |
| MORE+ | ¼-20 Tripod Adapter for Atlas10 Cameras | | #17-120 | C\$156.80 Request Quote | 2 In Stock <input type="text" value="1"/> |
| MORE+ | TFL-Mount to F-Mount Lens Adapter for Atlas™ and Atlas10 | | #13-754 | C\$777.00 Request Quote | 2 In Stock <input type="text" value="1"/> |
| MORE+ | 5m M12 to RJ45 IP67 CAT6A Cable | | #13-749 | C\$284.20 Request Quote | 8 In Stock <input type="text" value="1"/> |
| MORE+ | M8 8-pin GPIO cable, 1m | | #13-750 | C\$127.40 Request Quote | 11 In Stock <input type="text" value="1"/> |
| MORE+ | M8 8-pin GPIO cable, 5m | | #17-112 | C\$205.80 Request Quote | 20+ In Stock <input type="text" value="1"/> |
| MORE+ | M8 GPIO IP67 Cap | | #13-753 | C\$16.80 Request Quote | 4 In Stock <input type="text" value="1"/> |

Related Products



LUCID Vision Labs™ SENAiZ Intelligent Vision CMOS Camera



LUCID Vision Labs Atlas™ Power over Ethernet (PoE) 5GBASE-T (5GigE) Cameras



IDS Imaging uEye Warp10 10GigE Cameras



Teledyne FLIR IIS Oryx@10GigE Cameras

Imaging Lens Selector



Factory Automation

Telecentric

M12

Custom Sensor

Camera Model

Camera Model:

Number of Horizontal Pixels:

1

Number of Vertical Pixels:

2

Pixel Size (µm):


3

Working Distance (mm):

4

Horizontal Field of View (mm):

5



Disclaimer: Values represent theoretical values from lens design software. Actual lens performance varies due to manufacturing tolerances.

Calibration Services

PixelTraq Camera Calibration Services Quote Tool

Edmund Optics has partnered with Quartus Engineering to provide their **PixelTraq camera calibration service** for new orders of TechSpec imaging lenses and machine vision camera pairs. You will receive a fully assembled, focused, and calibrated imaging assembly along with calibration files and certification.

Use the tool below to explore camera calibration service options and pricing.

Please enter your required specifications here:

Camera

Imaging Lens

Calibration Color ⓘ

Camera Model Output ⓘ

Working Distance (m)

Aperture (f/#) ⓘ

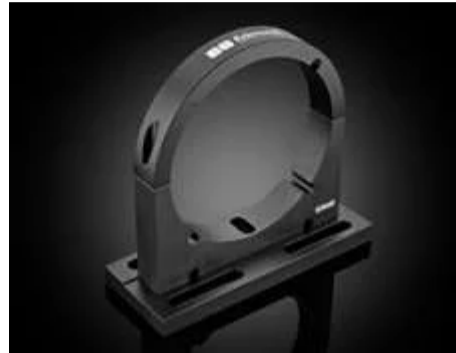
Additional Comments

Your Selections

CONTACT US TO DISCUSS

GET QUOTE PREVIEW

Frequently Purchased Together



#63-440 - Mounting Clamp,
138.6mm Inner Diameter
C\$616.00

Qty 



#16-748 - 0.28X, 28.7mm
TFL-Mount PlatinumTL™
Telecentric Lens
C\$7,028.00

Qty 