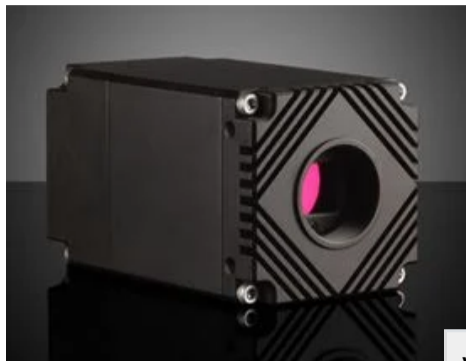


# Lucid Vision Labs Atlas10 ATX314S-MT, Sony IMX342, 31.4MP, Monochrome Camera

See More by [LUCID Vision Labs™](#)



Stock #74-731 NEW CONTACT US

- 1 +

C\$9,016<sup>.00</sup>

ADD TO CART

LUCID Vision Labs Atlas10 10GigE Power over Ethernet (PoE) Cameras (Front, C-Mount)



Volume Pricing	
Qty 1+	C\$9,016.00 each
Need More?	<a href="#">Request Quote</a>

Product Downloads	
<input checked="" type="checkbox"/> Start Up Guide	<input type="checkbox"/> User Manual
<input type="checkbox"/> Software	

**Spectrum:** Monochrome

## General

<b>Type:</b> Monochrome Camera	<b>Model Number:</b> ATX314S-MT
<b>Manufacturer:</b> Lucid Vision Labs	<b>Camera Series:</b> Atlas10

## Physical & Mechanical Properties

<b>Dimensions (mm):</b> 55 x 55 x 95.5 (excludes connectors and lens mount)	<b>Weight (g):</b> 325
<b>Housing:</b> Full	

## Sensor

<b>Image Buffer:</b> 380MB	<b>Sensor Format:</b> APS-C
<b>Resolution (Megapixels):</b> 31.40	<b>Frame Rate (fps):</b> 35.10
<b>Pixels (H x V):</b> 6,464 x 4,852	<b>Pixel Size, H x V (µm):</b> 3.45 x 3.45
<b>Sensing Area, H x V (mm):</b> 22.3 x 16.74	<b>Imaging Sensor:</b> Sony IMX342
<b>Type of Sensor:</b> Progressive Scan CMOS	<b>Shutter Type:</b> Global
<b>Pixel Depth:</b> 8/10/12 Bit	<b>Exposure Time:</b> 37.896µs - 10 s (Normal); 2.328µs - 2.464µs (Short Mode)
<b>Dynamic Range (dB):</b> 70.9	<b>Machine Vision Standard:</b> GigE Vision v2.0

## Electrical

**Power Consumption (W):** 11.5 (External Power Supply)  
<12 (PoE+)

## Hardware & Interface Connectivity

**Connector:** 10GigE, M12

**Power Supply:** Power Supply Required and Sold Separately:  
USA: [#18-364](#)  
Europe: [#18-364](#)  
Japan: [#18-364](#)  
Korea: Not Available  
China: [#18-364](#)

**GPIOs:** 1 opto-isolated input, 1 opto-isolated output, 2 non-isolated bi-directional ports

**Synchronization:** Hardware Trigger (GPIO), Software Trigger, or PTP (IEEE 1588)

**Interface Port Orientation:** Back Panel

**GPIO Connector Type:** 8-pin M8

## Threading & Mounting

**Mount:** TFL-Mount

**Mounting Threads:** 2 x 1/4-20 with Tripod Mount Adapter [#17-120](#)

## Environmental & Durability Factors

**Operating Temperature (°C):** -20 to +55

**Storage Temperature (°C):** -30 to +60

## Regulatory Compliance

**Certificate of Conformance:** [View](#)

## Product Details

- 10GBASE-T (10GigE) Ethernet Interface with PoE+
- 5.0 to 65 Megapixel Sony 4th Gen Pregius S Sensors
- Compact 55 x 55mm Form Factor
- TFL-Mount Compatible with some [TECHSPEC® CA Series FFL Lenses](#)

LUCID Vision Labs Atlas10 10GigE Power over Ethernet (PoE) Cameras combine 4th generation Sony Pregius S sensors with 10GigE interface, delivering fast frame rates at high resolution and image quality in a compact and rugged housing. The 10GBASE-T Power over Ethernet PoE+ interface allows for data transfer speeds of up to 1.2 GB/s and can also provide power to the camera over one CAT6a cable up to 25m in length. The high bandwidth enables these cameras to run at high bit depths (10/12-bit) to maximize image quality while maintaining smooth frame rates. The back-illuminated CMOS sensors offer high sensitivity, high dynamic range, and low noise, and are actively aligned to the lens mount at the same optical axis to minimize performance discrepancies resulting from sensor tilt and rotation. LUCID Vision Labs Atlas10 10GigE Power over Ethernet (PoE) Cameras are GigE Vision compliant and feature rugged M12 Ethernet and M8 GPIO connectors, making them ideal choices for industrial, automotive, factory automation, process control, and other machine vision applications requiring high resolutions and bandwidth.

## Accessories

**Note:** Compatible accessories for individual stock numbers may vary. If unsure about which accessories work with your products, please contact us [here](#).

	Title	Compare	Stock Number	Price	Buy
<a href="#">MORE+</a>	Power Over Ethernet (PoE) Single Port injector		<a href="#">#68-469</a>	<b>C\$149.80</b> <a href="#">Request Quote</a>	<b>3 In Stock</b> <input type="text" value="1"/>

	Title	Compare	Stock Number	Price	Buy
<a href="#">MORE+</a>	Broadcom Dual Port 10G Ethernet Card		#72-561	C\$1,421.00 <a href="#">Request Quote</a>	1 In Stock <input type="text" value="1"/>
<a href="#">MORE+</a>	Dual Port 10G POE+ Ethernet Card		#72-562	C\$1,652.00 <a href="#">Request Quote</a>	2 In Stock <input type="text" value="1"/>
<a href="#">MORE+</a>	Quad Port 5 Gigabit POE+ Ethernet Card		#72-563	C\$1,960.00 <a href="#">Request Quote</a>	4 In Stock <input type="text" value="1"/>
<a href="#">MORE+</a>	M8 GPIO Power Supply for Triton/Atlas, EU Plug		#18-365	C\$362.60 <a href="#">Request Quote</a>	6 In Stock <input type="text" value="1"/>
<a href="#">MORE+</a>	M8 GPIO Power Supply for Triton/Atlas/Helios™2, US Plug		#18-364	C\$388.50 <a href="#">Request Quote</a>	2 In Stock <input type="text" value="1"/>
<a href="#">MORE+</a>	¼-20 Tripod Adapter for Atlas10 Cameras		#17-120	C\$156.80 <a href="#">Request Quote</a>	2 In Stock <input type="text" value="1"/>
<a href="#">MORE+</a>	TFL-Mount to F-Mount Lens Adapter for Atlas™ and Atlas10		#13-754	C\$777.00 <a href="#">Request Quote</a>	2 In Stock <input type="text" value="1"/>
<a href="#">MORE+</a>	5m M12 to RJ45 IP67 CAT6A Cable		#13-749	C\$284.20 <a href="#">Request Quote</a>	8 In Stock <input type="text" value="1"/>
<a href="#">MORE+</a>	M8 8-pin GPIO cable, 1m		#13-750	C\$127.40 <a href="#">Request Quote</a>	11 In Stock <input type="text" value="1"/>
<a href="#">MORE+</a>	M8 8-pin GPIO cable, 5m		#17-112	C\$205.80 <a href="#">Request Quote</a>	20+ In Stock <input type="text" value="1"/>
<a href="#">MORE+</a>	M8 GPIO IP67 Cap		#13-753	C\$16.80 <a href="#">Request Quote</a>	4 In Stock <input type="text" value="1"/>

## Related Products



LUCID Vision Labs™ SENAiZ Intelligent Vision CMOS Camera



LUCID Vision Labs Atlas™ Power over Ethernet (PoE) 5GBASE-T (5GigE) Cameras



IDS Imaging uEye Warp10 10GigE Cameras



Teledyne FLIR IIS Oryx@10GigE Cameras

## Imaging Lens Selector



Factory Automation  
 Telecentric  
 M12

Custom Sensor  
 Camera Model

Camera Model:

**Number of Horizontal Pixels:**

1

**Number of Vertical Pixels:**

2

**Pixel Size (µm):**


3

**Working Distance (mm):**

4

**Horizontal Field of View (mm):**

5



**Disclaimer: Values represent theoretical values from lens design software. Actual lens performance varies due to manufacturing tolerances.**

## Calibration Services

### PixelTraq Camera Calibration Services Quote Tool

Edmund Optics has partnered with Quartus Engineering to provide their **PixelTraq camera calibration service** for new orders of TechSpec imaging lenses and machine vision camera pairs. You will receive a fully assembled, focused, and calibrated imaging assembly along with calibration files and certification.

Use the tool below to explore camera calibration service options and pricing.

Please enter your required specifications here:

Camera

Imaging Lens

Calibration Color ⓘ

Camera Model Output ⓘ

Working Distance (m)

Aperture (f/#) ⓘ

Additional Comments

### Your Selections

[CONTACT US TO DISCUSS](#)

[GET QUOTE PREVIEW](#)