

# LUCID Vision Labs Phoenix™ PHX050S-MNF-IX, Sony IMX264, 5.0 MP, Monochrome Camera

See More by [LUCID Vision Labs™](#)



LUCID Vision Labs Phoenix™ Power over Ethernet (PoE) Cameras



Stock #13-687 [CONTACT US](#) [Similar Cameras](#)

- 1 +

C\$700<sup>00</sup>

**ADD TO CART**

Volume Pricing	
Qty 1+	C\$700.00 each
Need More?	<a href="#">Request Quote</a>

Product Downloads	
<input checked="" type="checkbox"/> Start Up Guide	STEP:step
EO Spec Sheet	

**Note:** This item requires accessories for use | [Learn More](#)

**Spectrum:** Monochrome

## General

<b>Type:</b> Monochrome Camera	<b>Model Number:</b> PHX050S-MNF-IX
<b>Manufacturer:</b> Lucid Vision Labs	<b>Camera Series:</b> Phoenix™

## Physical & Mechanical Properties

<b>Dimensions (mm):</b> 24 x 24 x 27.35 (excludes connectors and lens mount)	<b>Weight (g):</b> 30
<b>Housing:</b> Partial	

## Sensor

<b>Image Buffer:</b> 128MB	<b>Sensor Format:</b> 2/3"
<b>Resolution (Megapixels):</b> 5.00	<b>Frame Rate (fps):</b> 24.00
<b>Pixels (H x V):</b> 2,448 x 2,048	<b>Pixel Size, H x V (µm):</b> 3.45 x 3.45
<b>Sensing Area, H x V (mm):</b> 8.45 x 7.07	<b>Imaging Sensor:</b> Sony IMX264
<b>Type of Sensor:</b> Progressive Scan CMOS	<b>Shutter Type:</b> Global
<b>Pixel Depth:</b> 12 bit	<b>Exposure Time:</b> 30µs - 10s
<b>Dynamic Range (dB):</b> 71.66	<b>Machine Vision Standard:</b> GigE Vision v2.0

## Electrical

<b>Power Consumption (W):</b>	2.5 (External Power Supply) 3.1 (PoE)
-------------------------------	--

## Hardware & Interface Connectivity

**Interface:** GigE (PoE)

**Connector:** GigE, ix Industrial®

**Power Supply:** Power over Ethernet (PoE) or via GPIO with 12-24VDC Power Supply

**GPIOs:** 1 opto-isolated input, 1 opto-isolated output, 2 non-isolated bi-directional ports

**Synchronization:** Hardware Trigger (GPIO), Software Trigger, or PTP (IEEE 1588)

**Interface Port Orientation:** Back Panel

**GPIO Connector Type:** 8-pin JST

## Threading & Mounting

**Mount:** NF-Mount

**Mounting Threads:** ¼-20 with Tripod Mount Adapter [#11-474](#)

## Environmental & Durability Factors

**Operating Temperature (°C):** -20 to +55

**Storage Temperature (°C):** -30 to +60

## Regulatory Compliance

**RoHS 2015:** [Exempt](#)

**Certificate of Conformance:** [View](#)

**Reach 247:** [Contains SVHC\(s\)](#)

## Product Details


- Unfolding Board Stacks for Customization
- Power Over Ethernet (PoE) for Easy Integration
- Compact Size Starting at 24 x 24mm

LUCID Vision Labs Phoenix™ Power over Ethernet (PoE) Cameras are compact, high performance cameras with one of the smallest form factors in the PoE GigE market. Featuring unfolding board stacks, these cameras easily transform between a 90° and 180° angle shape to provide flexible system integration. Additional software versatility is provided by GigE Vision compliancy, allowing for compatibility with third-party GigE Vision software. LUCID Vision Labs Phoenix™ Power over Ethernet (PoE) Cameras offer powerful Image Signal Processing (ISP), ensuring optimal camera performance with options including Region of Interest (ROI), Color Correction Matrix (CCM), and Binning without any limitations on higher frame rates. These cameras are ideal for industrial applications requiring cameras with compact form factors.

**Note:** GigE cable required for operation, both RJ45 and ix™ versions are available. The ix™ is a miniaturized industrial connector that is not compatible with RJ45 cables. Optional tripod adapter ([#11-474](#)) available.

## Accessories

**Note:** Compatible accessories for individual stock numbers may vary. If unsure about which accessories work with your products, please contact us [here](#).

	Title	Compare	Stock Number	Price	Buy
<a href="#">MORE+</a>	180° & 90° Transform Kit for 24x24mm Phoenix™ Cameras		<a href="#">#11-478</a>	<b>C\$309.40</b> <a href="#">Request Quote</a>	5 In Stock <input type="text" value="1"/> 

	Title	Compare	Stock Number	Price	Buy
<a href="#">MORE+</a>	2m ix Industrial® Ethernet CAT6A Cable		#13-746	C\$127.40 <a href="#">Request Quote</a>	4 In Stock <input type="text" value="1"/>
<a href="#">MORE+</a>	5m ix Industrial® Ethernet CAT6A Cable		#13-747	C\$182.00 <a href="#">Request Quote</a>	4 In Stock <input type="text" value="1"/>
<a href="#">MORE+</a>	¼-20 Tripod Adapter for Phoenix™ and Triton™		#11-474	C\$53.20 <a href="#">Request Quote</a>	16 In Stock <input type="text" value="1"/>
<a href="#">MORE+</a>	20cm GPIO 8 Pin JST Cable		#11-477	C\$53.20 <a href="#">Request Quote</a>	12 In Stock <input type="text" value="1"/>

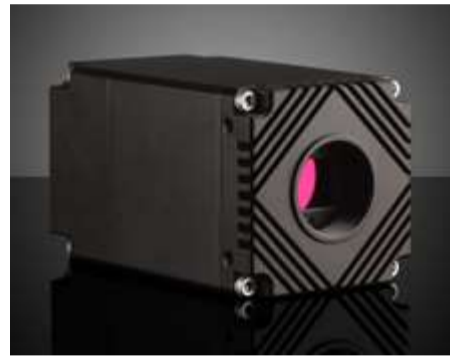
## Related Products



LUCID Vision Labs™ SENSEiZ  
Intelligent Vision CMOS Camera



LUCID Vision Labs Triton™  
GigE Power over Ethernet  
(PoE) Cameras



LUCID Vision Labs Atlas10  
10GigE Power over Ethernet  
(PoE) Cameras



Allied Vision Alvium G1 GigE  
PoE Cameras

## Imaging Lens Selector

Imaging

**Factory Automation**

**Telecentric**

**M12**

---

**Custom Sensor**

**Camera Model**

**Camera Model:**

**Number of Horizontal Pixels:**

1

**Number of Vertical Pixels:**

2

**Pixel Size (µm):**

3

**Working Distance (mm):**

4

**Horizontal Field of View (mm):**

5



**Disclaimer: Values represent theoretical values from lens design software. Actual lens performance varies due to manufacturing tolerances.**

## Calibration Services

### PixelTraq Camera Calibration Services Quote Tool

Edmund Optics has partnered with Quartus Engineering to provide their **PixelTraq camera calibration service** for new orders of TechSpec imaging lenses and machine vision camera pairs. You will receive a fully assembled, focused, and calibrated imaging assembly along with calibration files and certification.

Use the tool below to explore camera calibration service options and pricing.

Please enter your required specifications here:

Camera

Imaging Lens

Calibration Color ⓘ

Camera Model Output ⓘ

Working Distance (m)

Aperture (f/#) ⓘ

Additional Comments

CONTACT US TO DISCUSS

GET QUOTE PREVIEW

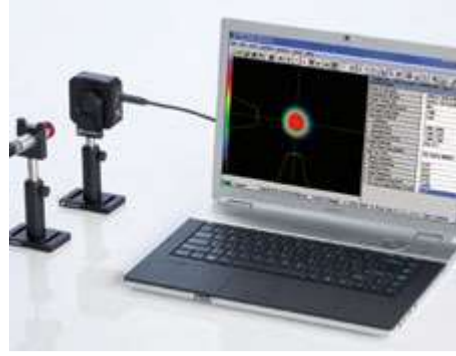
### Your Selections

## Frequently Purchased Together



#33-156 - Coherent® Lasercam™  
USB Laser Beam Profiler 1282868 |  
1/2" Format  
C\$6,286.00

Qty



#33-157 - Coherent® Lasercam™  
USB Laser Beam Profiler 1282870 |  
2/3" Format  
C\$8,106.00

Qty



#34-965 - C2590-IR, 1" Color,  
DALSA Genie Nano GigE  
PoE Camera  
C\$1,540.00

Qty



#56-764 - High Resolution 1550nm  
Converter for CCD Cameras  
C\$3,745.00

Qty

# Resources

## Media Type

- Application Note
- Video
- Published Article
- FAQ
- Glossary
- Technical Tool

APPLICATION NOTE

Sensor  
Performance  
and  
Limitations

APPLICATION NOTE

Imaging  
Electronics  
101: Basics of  
Digital...

APPLICATION NOTE

Imaging  
Electronics  
101: Camera  
Resolution fo...

APPLICATION NOTE

Imaging  
Electronics  
101:  
Understandi...

VIDEO

How Do  
Cameras  
Work?

PUBLISHED ARTICLE

Advancements  
in Short Wave  
Infrared  
Sensors

[View More](#)