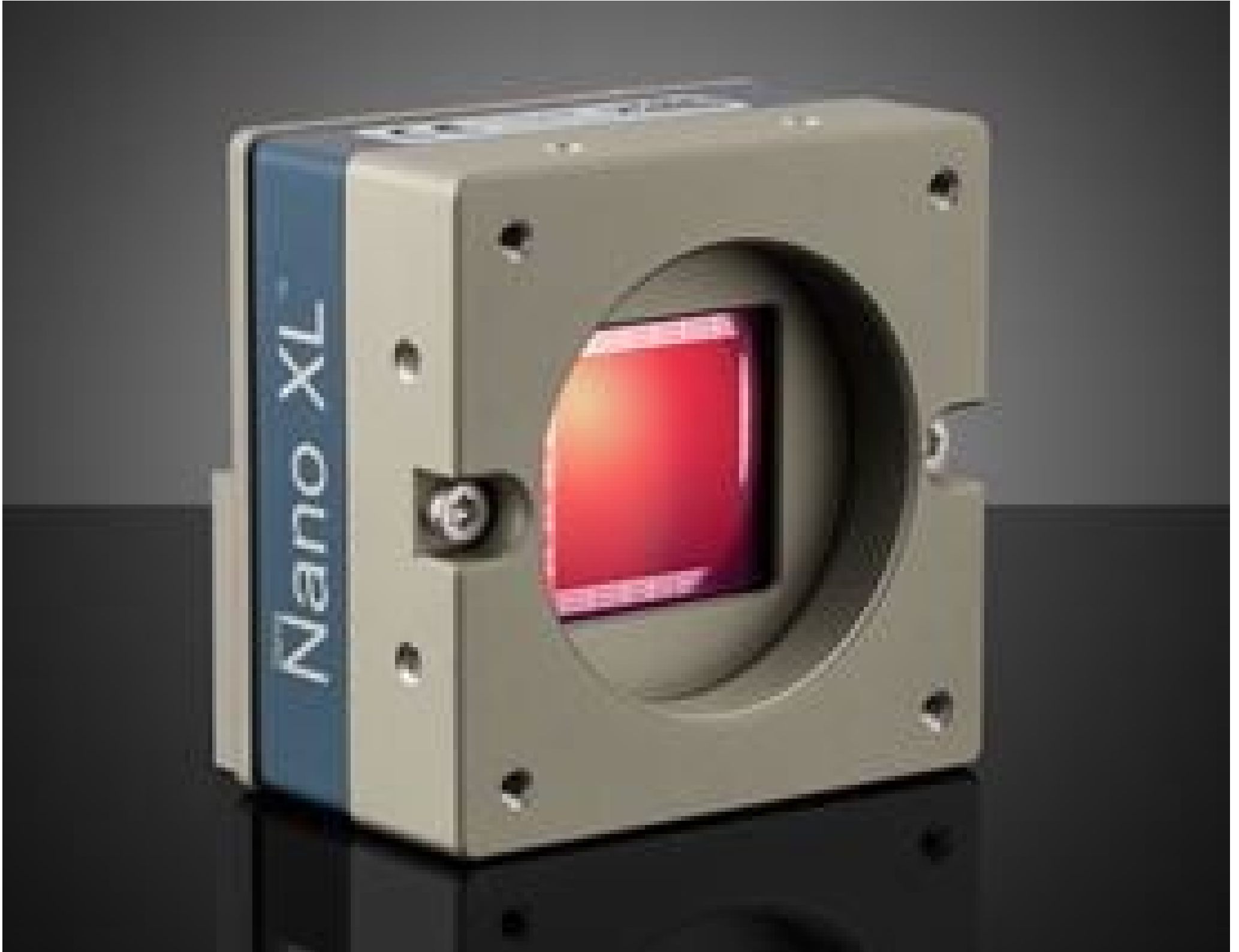


[See all 14 Products in Family](#)

## M8205, APS-C Monochrome, Teledyne DALSA Genie Nano 10GigE PoE Camera

See More by [Teledyne DALSA](#)



Teledyne DALSA Genie™ Nano 10GigE Cameras - Front



Stock #28-680 [CONTACT US](#)

⊖ 1 ⊕ C\$9,548<sup>00</sup>

**ADD TO CART**

Volume Pricing	
Qty 1+	C\$9,548.00 each
Need More?	<a href="#">Request Quote</a>

### Product Downloads

Monochrome	<b>Spectrum:</b>
<b>General</b>	
Monochrome Camera	<b>Type:</b>
G6-GM31-M8205	<b>Model Number:</b>
<b>Manufacturer:</b>	

Teledyne DALSA

Genie Nano-10GigE **Camera Series:**

## Physical & Mechanical Properties

**Dimensions (mm):**  
59 x 59 x 41 (excludes connectors and lens mount)

**Weight (g):**  
183

**Housing:**  
Full

## Sensor

**Sensor Format:**  
APS-C

**Resolution (Megapixels):**  
67.10

**Frame Rate (fps):**  
13.80

**Pixels (H x V):**  
8,192 x 8,192

**Pixel Size, H x V (µm):**  
2.50 x 2.50

**Sensing Area, H x V (mm):**  
20.48 x 20.48

**Imaging Sensor:**  
Teledyne e2v Emerald 67M

**Type of Sensor:**  
Progressive Scan CMOS

**Shutter Type:**  
Global

**Pixel Depth:**  
8/10 bit

**Exposure Time:**  
Automatic, Programmable, or via External Trigger

**Dynamic Range (dB):**  
62.00

**Machine Vision Standard:**  
GigE Vision v2.0

## Electrical

**Power Consumption (W):**  
12.5

## Hardware & Interface Connectivity

**Interface:**  
10GigE (PoE)

**Connector:**  
5GigE, RJ45 with Screw Locks

**GPIOs:**  
2 opto-isolated input, 3 opto-isolated output

**Synchronization:**  
Hardware Trigger (GPIO) or Software Trigger

**Interface Port Orientation:**  
Back Panel

**GPIO Connector Type:**  
6-pin Hirose (HR10)

## Threading & Mounting

**Mount:**  
M42-Mount

**Mounting Threads:**  
1/4-20 with Tripod Mount Adapter [#34-966](#)

## Environmental & Durability Factors

**Operating Temperature (°C):**  
-20 to +60

**Storage Temperature (°C):**  
-30 to +60

## Regulatory Compliance

**RoHS 2015:**  
[Exempt](#)

**Certificate of Conformance:**

## Product Details

- Up to 67.10 MP Resolution with Framrates up to 18.50FPS
- Supports Trigger-to-Image Reliability (T2IR) Framework
- Compact (44 x 59 x 59mm), M42-Mount, Lightweight, and Robust All Metal Design



Teledyne  
Authorized  
Distributor

Teledyne DALSA Genie™ Nano 10GigE Cameras are designed with the 10GBASE-T (10GigE) Ethernet Interface and can also run at ethernet link speeds of 1, 2.5, or 5GigE. These M42-mount cameras are available with either the Teledyne e2v Emerald 36M sensor featuring a 1.4" format or the Teledyne e2v Emerald 67M sensor which features an APS-C format. Genie™ Nano cameras support Sapera LT SDKs and 3rd Party GenICam compliant SDKs allowing for upgrading current systems without changing application software. Teledyne DALSA Genie™ Nano 10GigE Cameras support the Trigger-to-Image Reliability (T2IR) framework which is a combination of hardware and software features that work together at a system level to help improve the reliability and reduce the downtime of imaging systems. These cameras are ideal for applications involving Electronics Manufacturing Inspection, Intelligent Traffic Systems, and Aerial Imaging.

**Sapera LT** is a free image acquisition and control software development toolkit (SDK) for Teledyne DALSA'S 1D cameras / 2D cameras / 3D Laser Profiler cameras and frame grabbers. Hardware independent in nature, Sapera LT offers a rich development ecosystem for machine vision OEMs and system integrators. Sapera LT supports image acquisition from cameras and frame grabbers based on machine vision standards including GigE Vision™, CameraLink®, CameraLink HS™, CoaXpress®, and USB3 Vision™.