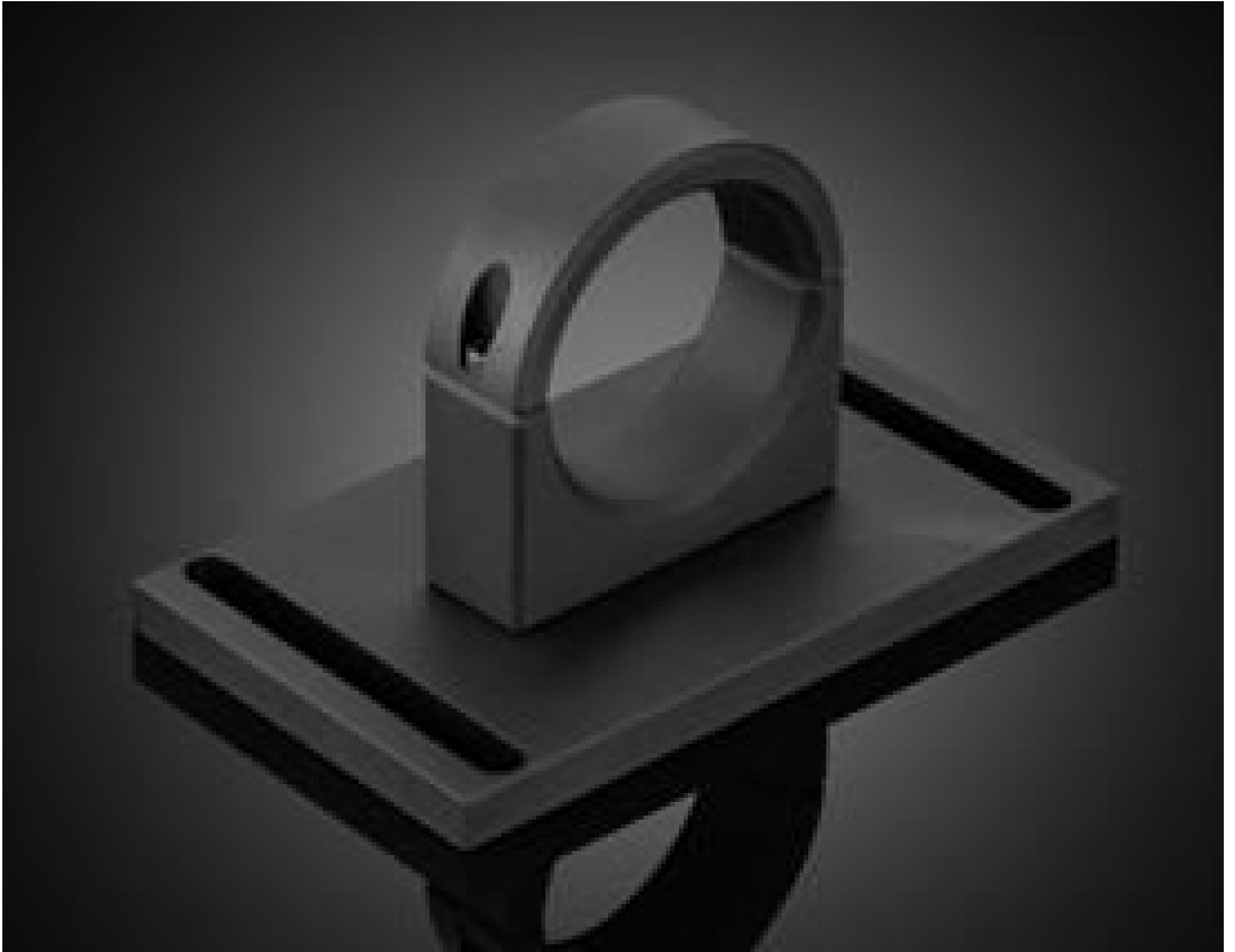


[See all 22 Products in Family](#)

TECHSPEC® Mounting Clamp, 46mm Inner Diameter



#63-233: Mounting Clamp, 46mm Inner Diameter

Stock **#63-233** [CONTACT US](#)

⊖ 1 ⊕ C\$352.80

ADD TO CART

| Volume Pricing | |
|----------------|-------------------------------|
| Qty 1+ | C\$352.80 each |
| Need More? | Request Quote |

Product Downloads

General

Lens Accessory **Type:**

Physical & Mechanical Properties

46.0 **Inner Diameter (mm):**

Optical Properties

VS **Lens Wavelength Range:**

Regulatory Compliance

Compliant

RoHS 2015:

View

Certificate of Conformance:

Compliant

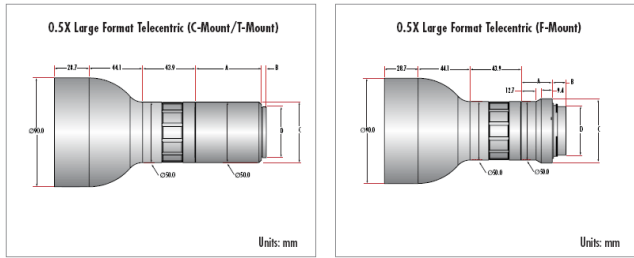
Reach 235:

Product Details

- High Resolution f/6 Bi-Telecentric Lens for Measurement
- Up to 35 MegaPixels, 2.8µm Pixel Size Sensors
- APS-C, C-Mount, T-Mount, F-Mount Telecentric Lens
- Magnification from 0.28X to 1.7X

TECHSPEC® PlatinumTL™ Telecentric Lenses are designed for semiconductor and electronics inspection, measurement, and gauging applications. The precision designs feature high telecentricity (<0.1°), low distortion (<0.1%), and high light throughput with an adjustable aperture that achieves f/6 when fully open. Capable of supporting large format 28.7mm diagonal sensors, these lenses are compatible with the Sony IMX342 APS-C sensor and other similar format sensors such as the Sony IMX530. TECHSPEC® PlatinumTL™ Telecentric Lenses produce unparalleled levels of contrast yielding maximum image quality with the highest degree of measurement accuracy. These lenses are suitable for high vibration environments and feature a removable recessed set screw for securing the iris in place.

Technical Information



| Description | | Stock No. | Flange | Length (A) | Front Diameter (B) | Back Diameter (C) |
|-------------|-----------|-------------------------|---------|------------|--------------------|-------------------|
| 0.28X | C-Mount | #62-933 | 17.5mm | 230.8mm | 60.5mm | 33.5mm |
| 0.5X | C-Mount | #62-932 | 17.5mm | 174.9mm | 50mm | 33.5mm |
| 1.7X | C-Mount | #63-232 | 17.5mm | 189.5mm | 60mm | 46mm |
| 0.28X | F-Mount | #62-922 | 46.5mm | 167.6mm | 138.6mm | 55mm |
| | M42 x 1.0 | #62-923 | 6.56mm | 208.5mm | 138.6mm | 50mm |
| | M42 x 1.0 | #62-924 | 19.53mm | 195.5mm | 138.6mm | 50mm |
| 0.5X | F-Mount | #62-912 | 46.5mm | 143mm | 90mm | 55mm |
| | M42 x 1.0 | #62-913 | 6.56mm | 184mm | 90mm | 50mm |
| | M42 x 1.0 | #62-914 | 19.53mm | 171.1mm | 90mm | 50mm |
| 0.9X | F-Mount | #62-902 | 46.5mm | 170.8mm | 65mm | 55mm |
| | M42 x 1.0 | #62-903 | 6.56mm | 210.7mm | 65mm | 53mm |
| | M42 x 1.0 | #62-904 | 19.53mm | 197.8mm | 65mm | 53mm |

