

Ring Mount with 0.5" Inner Diameter (ID)



Ring Mounts

Stock #54-265 **20+ In Stock**

- 1 + C\$40⁰⁰

ADD TO CART

Volume Pricing

Qty 1+	C\$40.95 each
Need More?	Request Quote

Product Downloads

General

Mounting Adapter **Type:**
0.5 **Inner Diameter (inches):**

Physical & Mechanical Properties

Black Anodized Aluminum **Construction:**
1.25 **Outer Diameter (inches):**

0.375 Thickness (inches):

Threading & Mounting

1/4-20 Mounting Threads:

Regulatory Compliance

[Compliant](#) RoHS 2015:

[Compliant](#) Reach 224:

[View](#) Certificate of Conformance:

Product Details

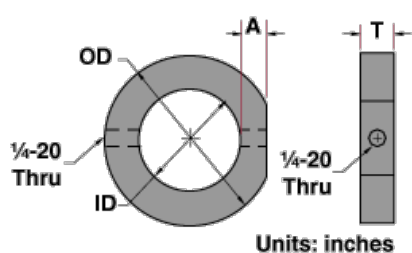
- Swivel Arm for Added Flexibility
- 90° Angle Mounts Connect Horizontal Arms onto Vertical Posts
- Ring Mounts for Increased Versatility
- [Imaging System Bases](#), [Rack and Pinion Focusing Mounts](#), and [Stainless Steel Posts](#) Also Available

Accessories for Imaging Systems are available to increase the versatility of an imaging system. Products in this family include a swivel arm, Infinity Microscope, 90° angle mount, and ring mounts. The swivel arm adds an axis of rotation to the rack and pinion-focusing mounts. The swivel arm can rotate around a vertical post, and the rack and pinion focus mount can rotate around the 1/4" post attached to the swivel arm. The Infinity microscope mounting adapter is compatible with Rack and Pinion Mount [#39-357](#) and reduces the thru hole diameter to 58mm. The 90° angle mount, offered in Accessories for Imaging Solutions, allows the mounting of posts at 90° in optical systems. Ring mounts are available for attaching light sources, articulating arms, straight posts, or any 1/4-20 accessory to standard mounting hardware.

Features

90° Angle Mount [#39-355](#) features two 3/4" thru holes at 90° with locking knobs. All Ring Mounts feature 1/4-20 mounting hole, set screw for securing post, or optical component within the inner diameter. Swivel Arm [#03-684](#) features a 0.75" diameter post which accepts rack and pinion focusing mount and allows swivel movement. Infinity Mounting Adapter [#39-358](#) features male and female T-thread to replace 24mm tube section of infinity lens.

Technical Information



Stock No.	A	T	O.D.	I.D.
#54-263	0.375"	0.5"	2.5"	1.5"
#54-264	0.375"	0.5"	1.75"	0.75"
#54-265	0.271"	0.375"	1.25"	0.5"

