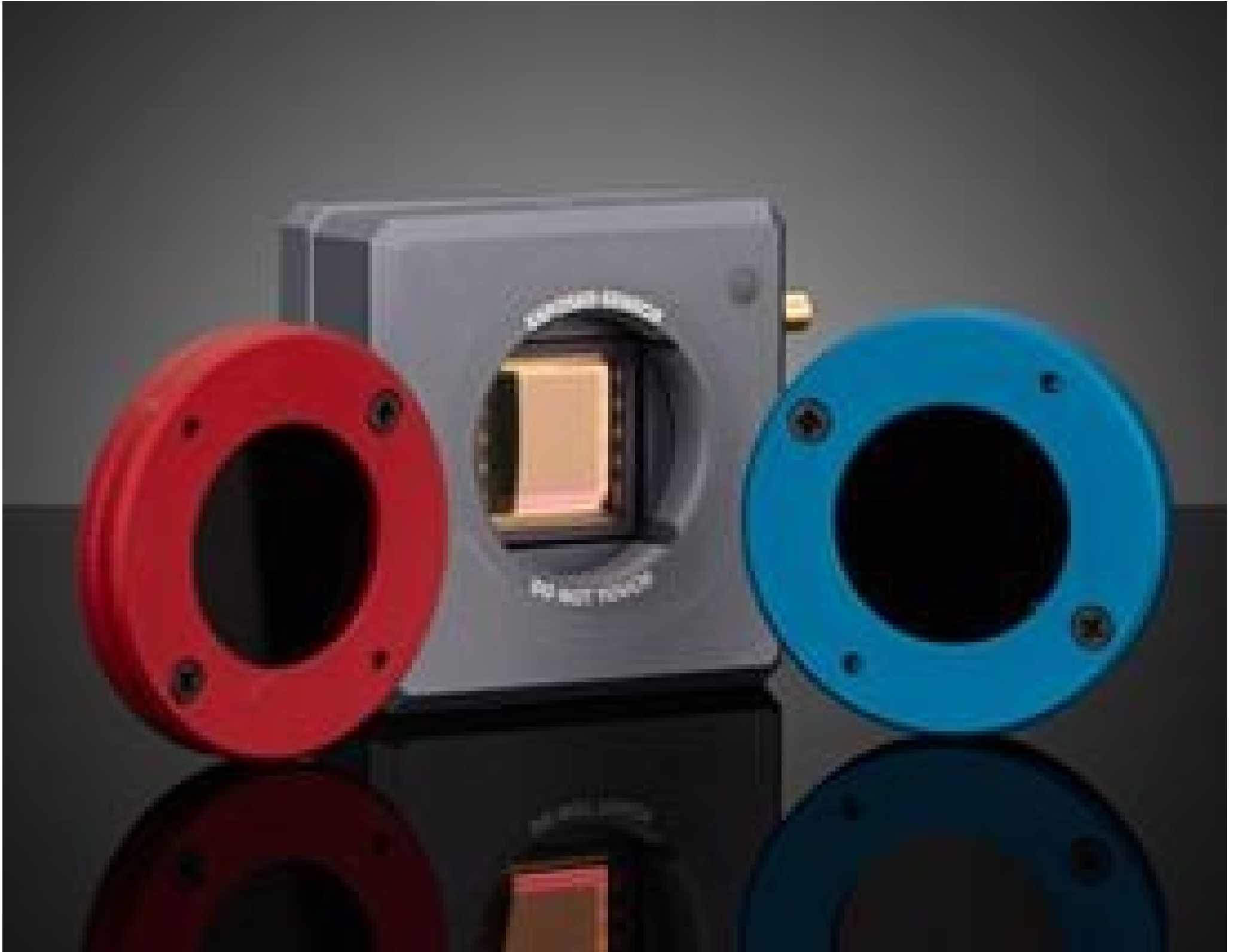


[See all 18 Products in Family](#)

Set of 6, 1" Stackable, Magnetic ND Filters for WinCamD-LCM



#24-211 WinCamD-LCM Beam Profiler

Stock #71-558 **1 In Stock**

⊖ 1 ⊕ C\$3,101⁰⁰

ADD TO CART

Volume Pricing

Qty 1+	C\$3,101.00 each
--------	------------------

Need More?	Request Quote
------------	-------------------------------

Product Downloads

General

Note:

Filters are mounted at 2° to axis.

Contents of Kit:

Includes MagND-0.5, MagND-1, MagND-2, MagND-3, MagND-4, MagND-5 and caps with alignment targets, clear carrying case, filter cleaner and cloth.

Regulatory Compliance

Certificate of Conformance:

[View](#)

Product Details

- Designed for Use from 355 to 16000nm
- Compatible with Beam Diameters Down to 52 μ m
- Robust and Easy to Use Free Software **Provided**
- Measure Beam Wander, M², Divergence, and More

DataRay Camera Beam Profilers provide excellent solutions for beam analysis of both continuous wave and pulsed laser sources. Each beam profiler features an integrated CMOS sensor (IR profilers feature Microbolometer sensors) that eliminates comet trailing for higher resolution output and allows for update rates of 60+ Hz. Sensors are available with active sizes of 6.6, 11.3, and 25mm horizontals, enabling measurement of large beam diameters. DataRay Camera Beam Profilers have the added advantage of a free, robust software with analysis features such as M² measurement, beam wander and logging, and instrument alignment. These profilers are USB3.0/2.0 powered and include a 3m flexible screw locking cable. Neutral density filters with optical densities of 1.0, 2.0, and 4.0 are included.

;