

[See all 11 Products in Family](#)

UV 385nm, MicroBrite LED Spot Light

See More by [Advanced Illumination](#)



Advanced Illumination MicroBrite Spot Light

Stock **#91-075** NEW **1 In Stock**

C\$497⁰⁰

ADD TO CART

Volume Pricing	
Qty 1+	C\$497.00 each
Need More?	Request Quote

Note: This item requires accessories for use | [Learn More](#)

Product Downloads

General

SL223-385IC **Model Number:**

LED Illuminator **Type of Illumination:**

Advanced Illumination **Manufacturer:**

Spot Light **Geometry:**

Constant **Illumination Mode:**

Physical & Mechanical Properties

7.90 **Diameter (mm):**

1/4 **Fiber Bundle Diameter (inches):**

38.10 **Length (mm):**

0.312 **Outer Diameter (inches):**

Optical Properties

UV **Color:**

385 **Wavelength (nm):**

Hardware & Interface Connectivity

Flying Leads **Connector:**

Power Supply:
Power Supply Required and Sold Separately.
USA: [#66-855](#)
Europe: [#66-855](#)
Japan: [#89-513](#)
Korea: [#33-773](#)
China: [#66-855](#)

Environmental & Durability Factors

0 - 60 **Operating Temperature (°C):**

IP65 **Environmental Rating:**

Regulatory Compliance

[View](#) **Certificate of Conformance:**

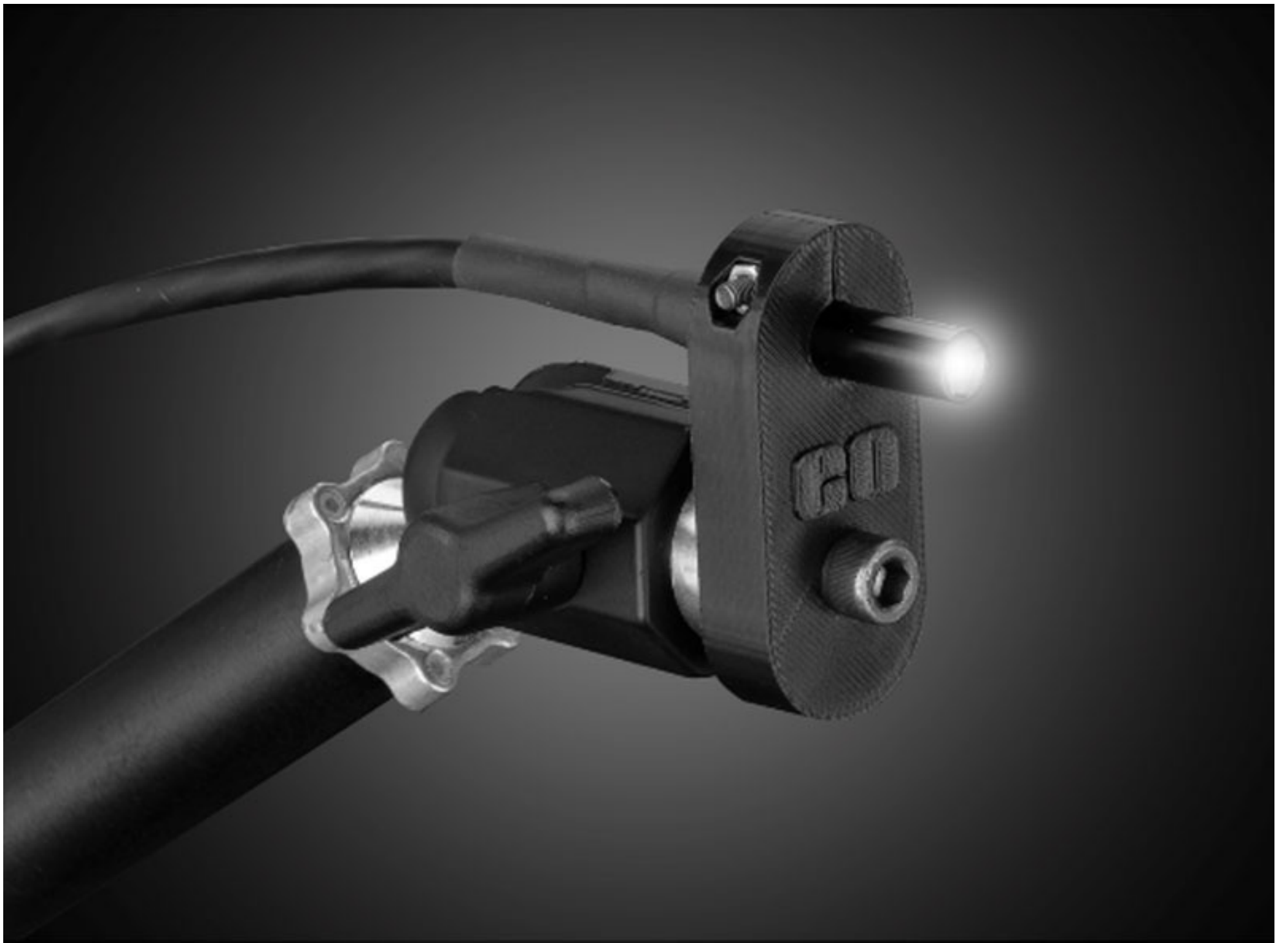
Product Details

- Compatible with 8mm or 1/4" (0.312") Fiber Illumination Port
- IP65 Rated - Protection from Dust and Water Spray
- 50,000 Hour Lifetime

Advanced Illumination MicroBrite Spot Lights are designed to replace fiber optic illumination systems used in microscopes and machine vision applications. They serve as drop in replacements for any 1/4" or 8mm fiber light guide, or can combine with light guide adapters to replace large fiber bundles. Advanced Illumination MicroBrite Spot Lights are 25X brighter than standard spot lights, feature low power consumption, and a 50,000 hour lifetime.

Note: The 24V Power Supply required for operation ([#66-855](#)) is not included. Units cannot be intensity controlled.

[3D-Printable Mount Files](#)



Spot Light Configuration

**DOWNLOAD
NOW**

Designed for use with the [Articulating Arm Mounting Systems](#), these 3D-printed mounts allow easy positioning of lights in brightfield or darkfield setups. The design is based on mounting illumination to 1/4-20" breadboards or into 80/20 extrusion systems, but can be adapted based on user needs. Mounts are available for ring, bar, line, and inline spot lights.



Application Note

Illumination Mounts for Machine Vision Applications
[Read](#) 



Video

Assembly of 3D Printed Mounts for Common Illumination Geometries
[Watch](#) 