

[See all 17 Products in Family](#)

## White w/ Barrel Mount, Brightfield/Darkfield LED Ring Light w/ Barrel Mount

See More by [Advanced Illumination](#)



Stock #66-787 [CONTACT US](#)

⊖ 1 ⊕ C\$1,813<sup>00</sup>

**ADD TO CART**

Volume Pricing	
Qty 1+	C\$1,813.00 each
Need More?	<a href="#">Request Quote</a>

**Note:** This item requires accessories for use | [Learn More](#)

### Product Downloads

### General

RL5064B-WHI-C	<b>Model Number:</b>
50,000	<b>LED Lifetime (hours):</b>
64.00	<b>Number of LEDs:</b>
LED Illuminator	<b>Type of Illumination:</b>

**Note:**  
Optional Manual Intensity Adjustment [#86-887](#) and [#89-555](#) are Available

Advanced Illumination **Manufacturer:**

Ring Light **Geometry:**

Constant **Illumination Mode:**

## Physical & Mechanical Properties

100.00 **Diameter (mm):**

33.7 **Height (mm):**

55.5 **Inner Diameter (mm):**

100.00 **Outer Diameter (mm):**

## Optical Properties

White **Color:**

6 - 64 **Working Distance (mm):**

## Electrical

30.00 **Maximum Trigger Frequency (Hz):**

## Hardware & Interface Connectivity

Flying Leads **Connector:**

**Power Supply:**  
Power Supply Required and Sold Separately.  
USA: [#66-855](#)  
Europe: [#66-855](#)  
Japan: [#89-513](#)  
Korea: [#33-773](#)  
China: [#66-855](#)

## Threading & Mounting

Barrel Mount **Mount:**

M4 x4 **Mounting Threads:**

## Environmental & Durability Factors

0-65 **Operating Temperature (°C):**

## Regulatory Compliance

[Compliant](#) **RoHS 2015:**

[View](#) **Certificate of Conformance:**

[Contains SVHC\(s\)](#) **Reach 233:**

## Product Details

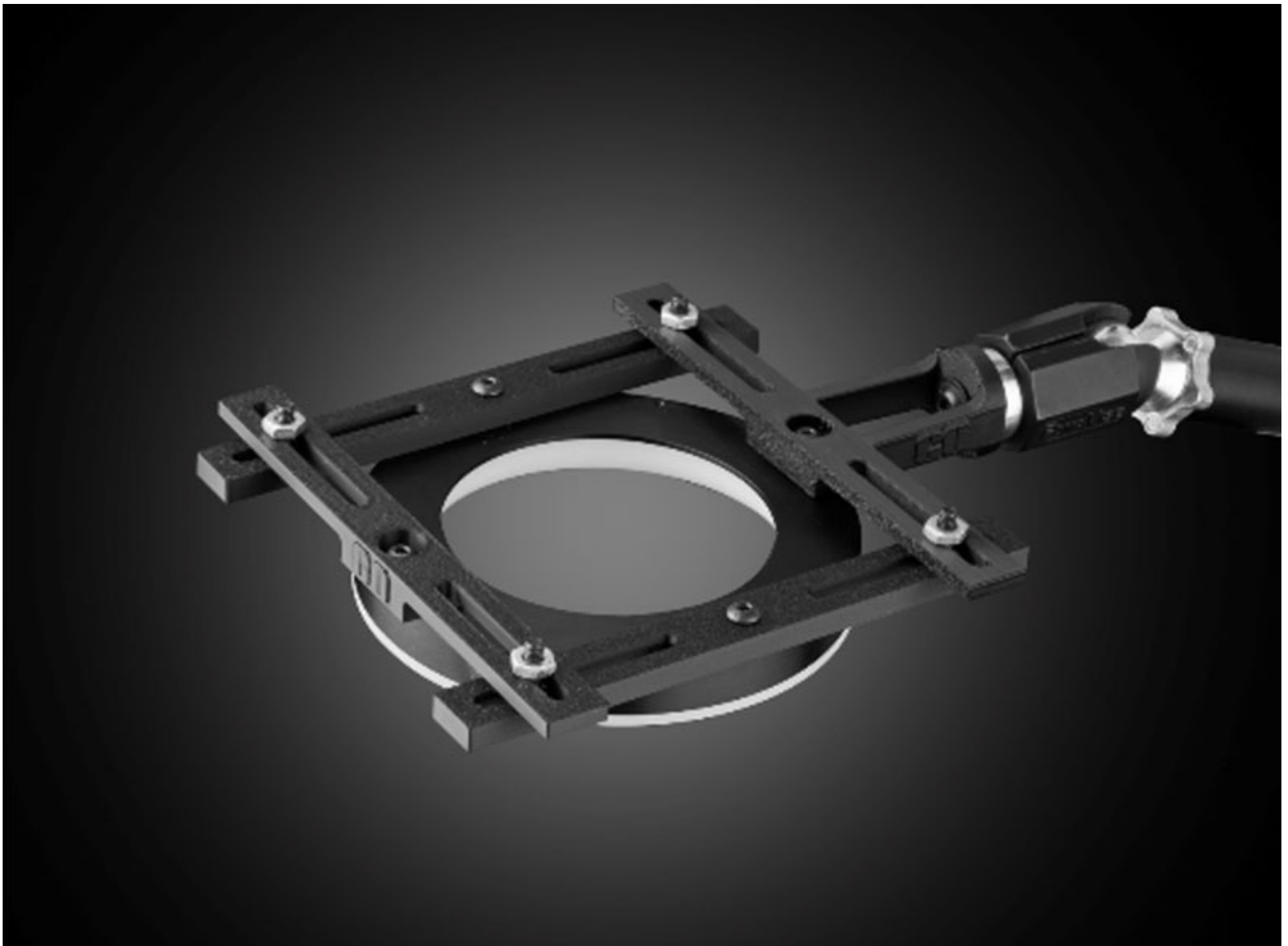
For more information on Darkfield Illumination, click [here](#).

- Hybrid Diffuse Brightfield and Darkfield Illumination
- Can Be Used Independently or Simultaneously
- Fixed Intensity or Strobed Options

Advanced Illumination Brightfield/Darkfield LED Ring Lights offer a level of versatility not previously available. Two independently powered rings of LEDs provide darkfield and brightfield illumination. The strobed models' flash duration is dependent on a trigger signal or potentiometer setting. The duration of the strobe can be adjusted from 30 - 300µs via a knob located in the back of the unit. The trigger input signal of the Advanced Illumination Brightfield/Darkfield LED Ring Light is CMOS/TTL compatible. The maximum trigger frequency is 30 Hz.

**Note:** Required 24V power supply [#66-855](#). [Accessories for Advanced Illumination products](#) are available and sold separately.

[3D-Printable Mount Files](#)



Ring Light Configuration

[Download Now](#)

Designed for use with the [Articulating Arm Mounting Systems](#), these 3D-printed mounts allow easy positioning of lights in brightfield or darkfield setups. The design is based on mounting illumination to ¼-20" breadboards or into 80/20 extrusion systems, but can be adapted based on user needs. Mounts are available for ring, bar, line, and inline spot lights.



Application Note

Illumination Mounts for Machine Vision Applications

[Read](#)



Video

Assembly of 3D Printed Mounts for Common Illumination Geometries

[Watch](#)