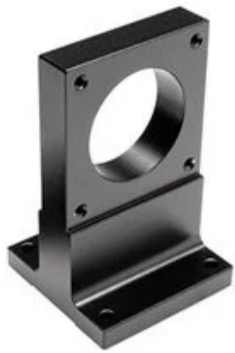


[« See all 12 Products in Family](#)
[All Products](#) / [Optomechanics](#) / [Manual Stages and Slides](#) / [Accessories for Manual Stages and Slides](#) / [Stage Adapter Plates and Accessories](#)

# TECHSPEC® Z-Bracket for 70mm Stage, Metric



Z-Bracket

Stock #67-088 [CONTACT US](#)

1 **C\$196<sup>.00</sup>**

**ADD TO CART**

Volume Pricing	
Qty 1+	C\$196.00 each
Need More?	<a href="#">Request Quote</a>

Product Downloads	
STEP:step	PDF Drawing:pdf
IGES:igs	eDrawing:eprt
EO Spec Sheet	<a href="#">Download All</a>

## General

<b>Type:</b> Metric	<b>Function:</b> Z-Bracket
<b>Compatible Stage Size (mm):</b> 70	

## Physical & Mechanical Properties

<b>Construction:</b> Black Anodized Aluminum	<b>Dimensions (mm):</b> 70 x 70 x 105
--	---------------------------------------

## Regulatory Compliance

<b>RoHS 2015:</b> <a href="#">Compliant</a>	<b>Certificate of Conformance:</b> <a href="#">View</a>
<b>REACH 241:</b> <a href="#">Compliant</a>	

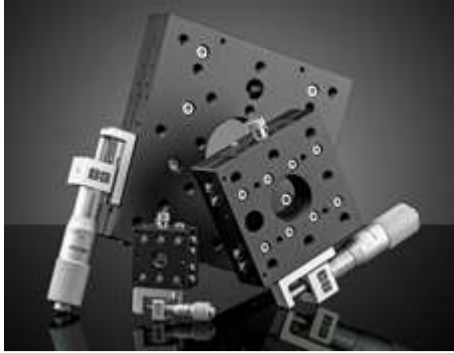
## Product Details

- Compatible with 30mm, 40mm, 70mm and 125mm [TECHSPEC® Crossed Roller Translation Stages](#)
- Compatible with [Rotary](#) and [Tip-Tilt](#) TECHSPEC® Stages
- Used to Configure Stages into X-Y-Z Configurations
- Black Anodized Aluminum Construction

TECHSPEC® Stage Adapter Plates and Accessories are designed to simplify the integration of our popular TECHSPEC Stages in experiments and benchtop systems. Bottom adapter plates are compatible with all 30 and 40mm Single Axis Translation Stages, Vertical Translation Stages, Rotary Stages, Tip-Tilt Stages, and Goniometers, providing a convenient way to mount each stage to standard breadboard and Optical Tables. Metric adapter plates are compatible with M6 tapped tables, while English adapter plates are compatible with ¼-20 tapped tables. Top adapter plates provide five ¼-20 (English plates) or M6 x 1.0 (Metric plates) mounting holes for easily integrating standard posts and post holders with these stages.

A complete line of Z-axis brackets is also available to combine our TECHSPEC® Stages into multi-axis positioning systems. By purchasing single-axis stages separately, Z-axis brackets can be used to configure your own X-Y-Z combination, using different drive options, travel options, and even standard or thru-hole mounting stage options. All Z-axis brackets include socket head cap screws (S.H.C.S.) to connect two stages. All standard profile brackets have thru-hole clearance. **Note:** All 70 and 125mm Stages will mount directly to standard tables and breadboards without the need for an adapter plate.

## Related Products



Crossed-Roller Bearing Linear Translation Stages (Thru-Hole Model)



Crossed-Roller Bearing Linear Translation Stages (Standard-Top Model)



Tip-Tilt Stages



Rotary Stages

## Frequently Purchased Together



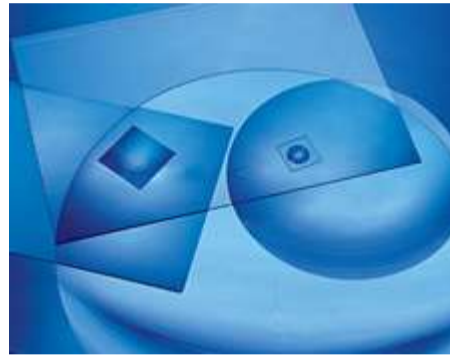
#03-618 - 5mm Spacer to convert CS-Mount Cameras to C-Mount  
C\$40.60

Qty



#03-655 - Sliding 2" x 3" Base Plate  
C\$35.35

Qty



#43-023 - 1.5" x 1.5", 0.6" FL, Aspheric Fresnel Lens  
C\$54.60

Qty



#47-111 - Mounting Plate for 25.4mm Diameter Off-Axis Mirrors  
C\$189.00

Qty



## Resources

### Media Type

- FAQ
- Glossary
- Application Note
- Trending in Optics
- Video

? FAQ

Do you have any components that would...

? FAQ

Do your iris diaphragms have mounts for...

GLOSSARY

Axial Runout

GLOSSARY

Concentricity

GLOSSARY

Inverted Load Capacity

GLOSSARY

Tangent Arm Drive

View More

