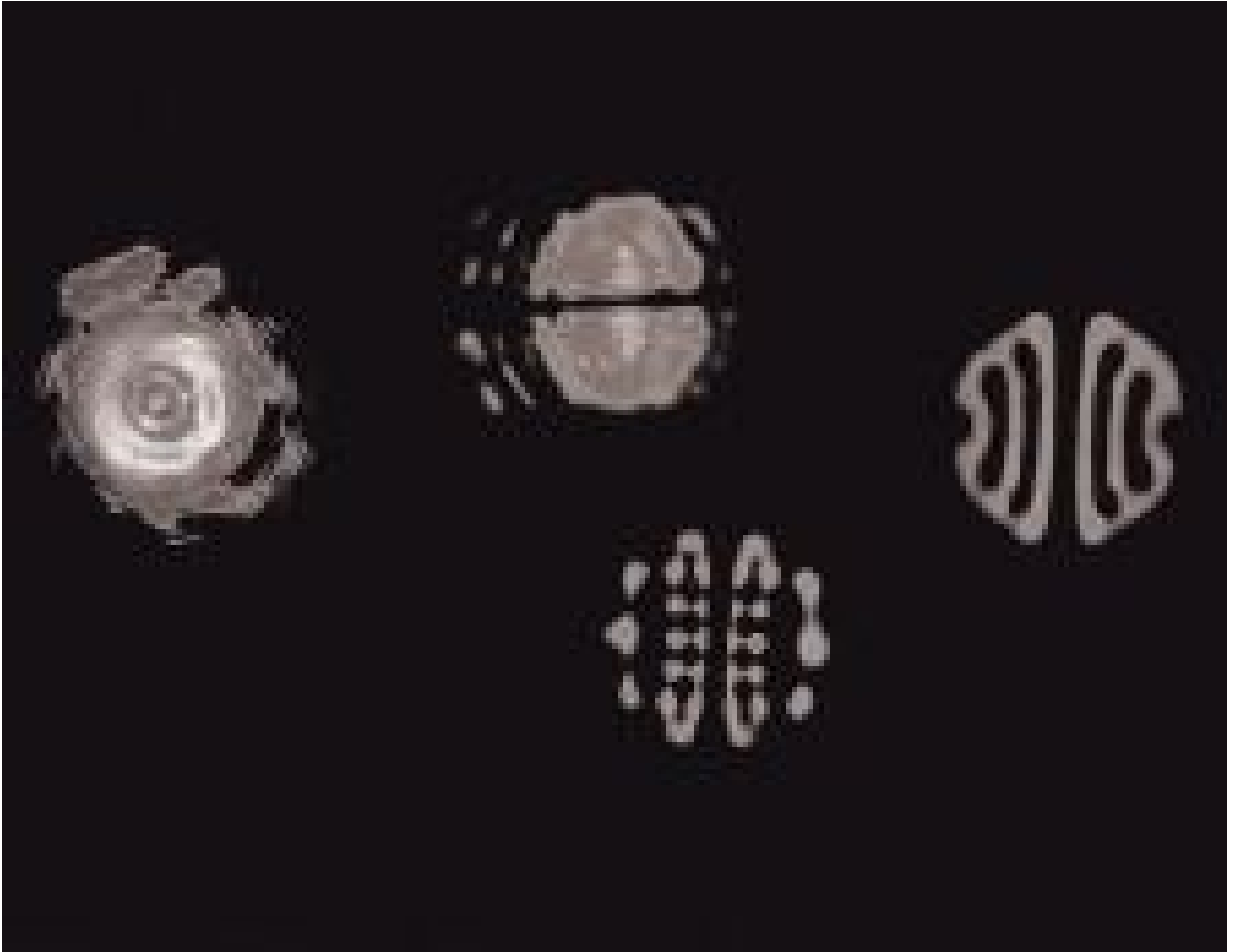


[See all 6 Products in Family](#)

ZAP-IT® Laser Alignment Paper, 4 x 8", 2mm Sq. Grid Pattern, Box of 50 Sheets



Stock #15-828 **2 In Stock**

C\$298^{.20}

ADD TO CART

Volume Pricing	
Qty 1-5	C\$298.20 each
Qty 6-24	C\$268.80 each
Need More?	Request Quote

Product Downloads

General

Note:

Recommended Pulsed Width: 1ns to 30ms
 Recommended Power Level Range: 5 mJ/cm² to 20 J/cm²

Physical & Mechanical Properties

0.009 **Thickness (inches):**

0.24 **Thickness (mm):**

4 x8 **Sheet Size (in):**

101.6 x203.2 **Sheet Size (mm):**

Regulatory Compliance

Compliant **RoHS 2015:**

View **Certificate of Conformance:**

Compliant **Reach 247:**

Product Details

- Industrial Standard Beam Profile Viewing Paper
- Records Beam Shape, Divergence, Mode, and Intensity Profile of Pulsed Lasers
- Suitable for Broadband Sources from UV to IR

ZAP-IT® Laser Alignment Paper is designed to test the characteristics of pulsed laser sources from the ultraviolet to infrared. Beam characteristics are recorded by holding the ZAP-IT® Laser Alignment Paper in the beam path. ZAP-IT® Laser Alignment Paper is ideal for use in alignment applications or with [laser optics](#) including laser beam expanders, optical lenses, apertures, attenuators, or power meters. For continuous wave lasers, use a mechanical chopper, Q-switch, or manually switch the laser on and off rapidly to create short pulses.

Note: It may be difficult to see the beam characteristics when the input beam diameter is 1/4"/6.35mm or less. If so, use a [beam expander](#) or [plano convex lens](#) to magnify the beam diameter. If using a plano convex lens, place ZAP-IT® Laser Alignment Paper at an image distance of 2.5 times longer than the focal length of the lens.
